

EXTENSION

SOUTHBEND SUBDIVISION **(FORMERLY BREWER HOMES SUBDIVISION)**

This is a request for a one-year extension of a previously approved 51-lot subdivision. The subdivision is located on the West side of Carroll Plantation Road, at the West termini of Sunny Side Drive and Lazy Lane.

This is the first request for an extension since the subdivision was originally approved in 2005. There have been no changes in conditions in the surrounding area that would affect the subdivision as previously approved, nor have there been changes to the regulations that would affect the previous approval.

Based on the preceding, it is recommended that this request for extension be approved.

LOCATOR MAP



APPLICATION NUMBER Extension DATE March 16, 2006

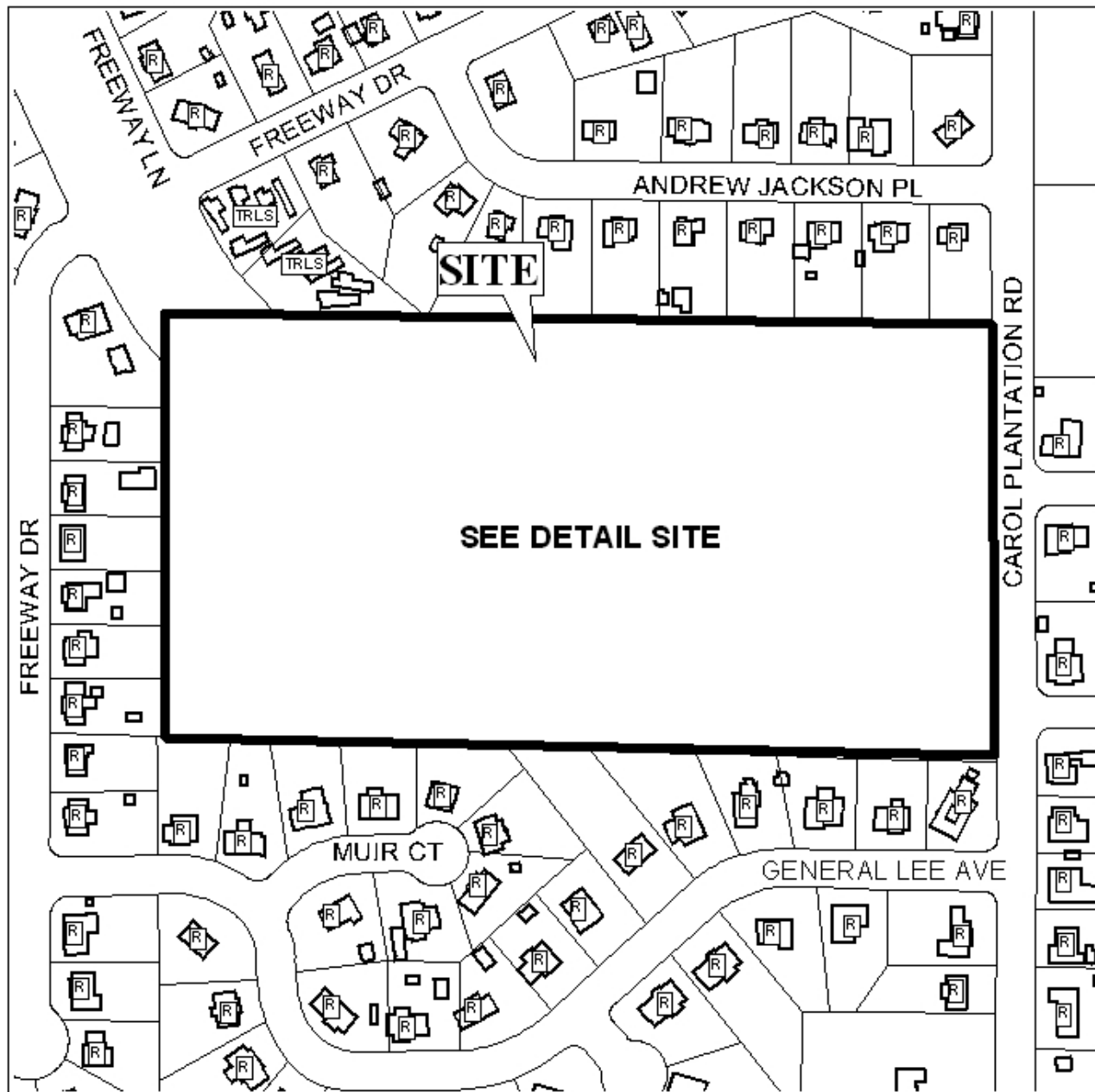
APPLICANT Southbend Subdivision(formerly Brewer Homes Subdivision)

REQUEST Subdivision



NTS

SOUTHBEND SUBDIVISION (FORMERLY BREWER HOMES SUBDIVISION)

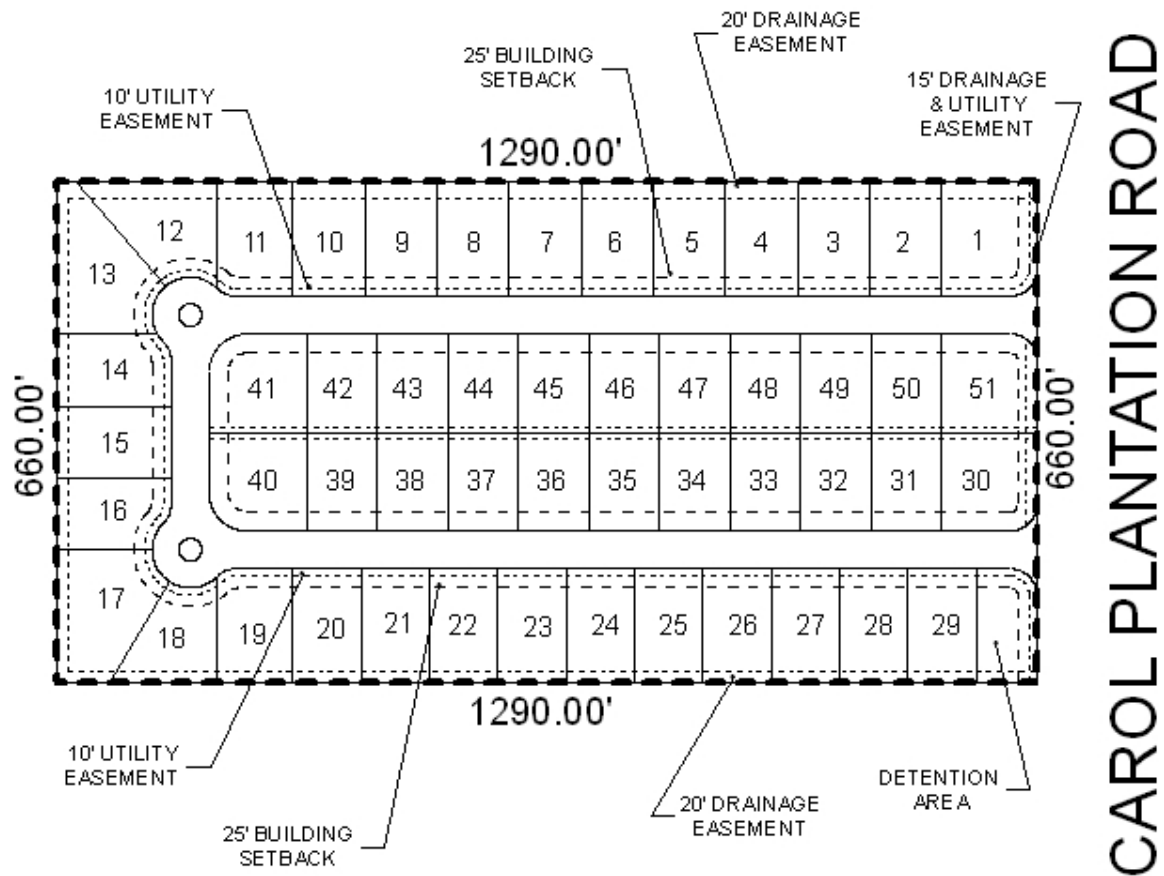


APPLICATION NUMBER Extension DATE March 16, 2006

LEGEND



DETAIL SITE PLAN



APPLICATION NUMBER Extension DATE March 16, 2006
APPLICANT Southbend Subdivision(formerly Brewer Homes Subdivision)
REQUEST Subdivision

