

## **EXTENSION**

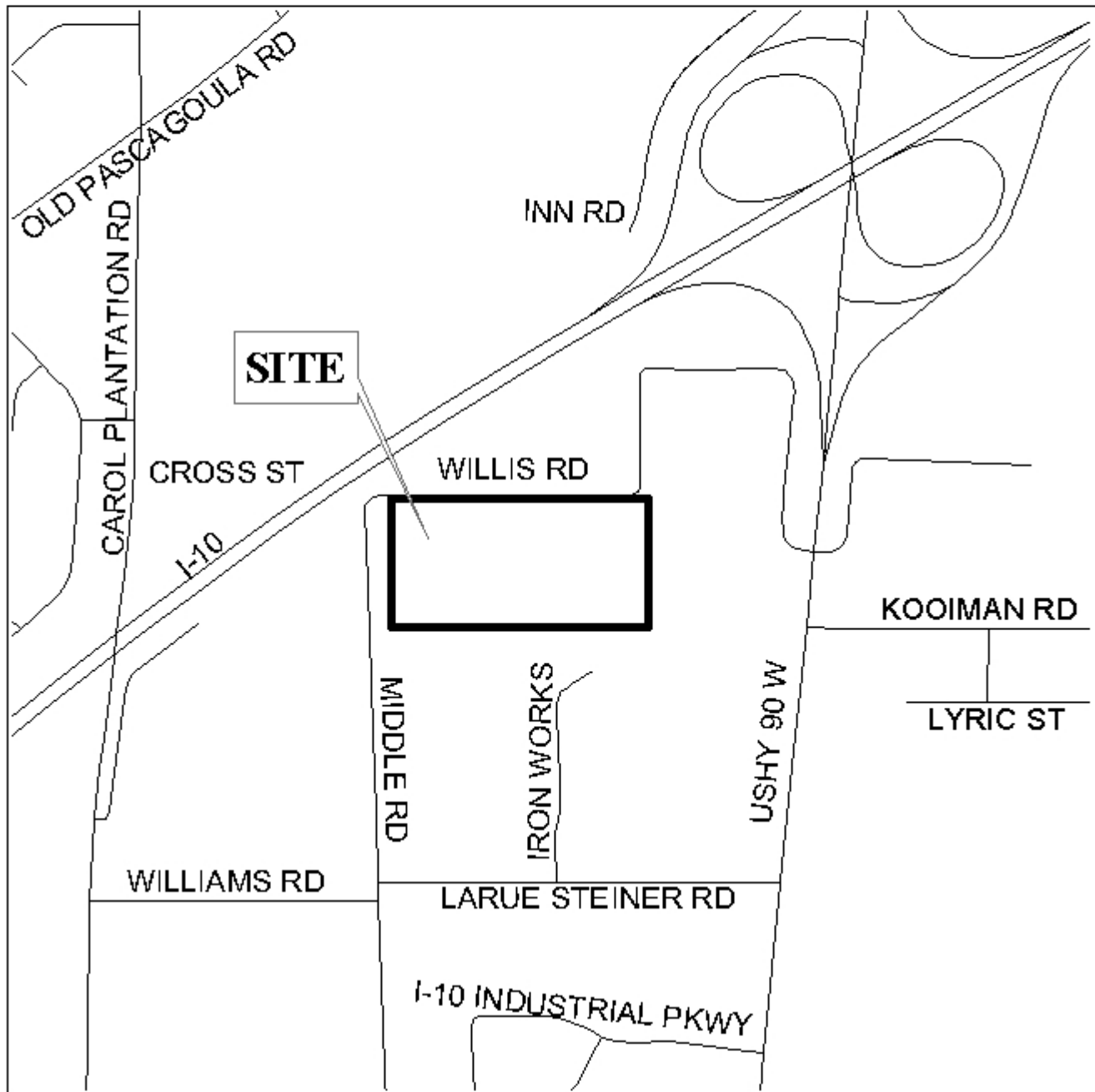
### **RAM'S HEAD ADDITION TO TILLMAN'S CORNER SUBDIVISION (FORMERLY HEAD'S ADDITION TO TILLMAN'S CORNER SUBDIVISION)**

This is a request for a one-year extension of a previously approved 5-lot subdivision. The subdivision is located on the South side of Cross Street, 100' ± East of Middle Road.

This is the third extension since the subdivision was originally approved in 2002. Since 2002, there have been three lots recorded and developed. However, the remaining lots have not been recorded. There have been no changes in conditions in the surrounding area that would affect the subdivision as previously approved; nor have there been changes to the Regulations that would affect the previous approval.

Based upon the preceding, it is recommended that this request for extension be denied.

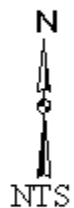
## LOCATOR MAP



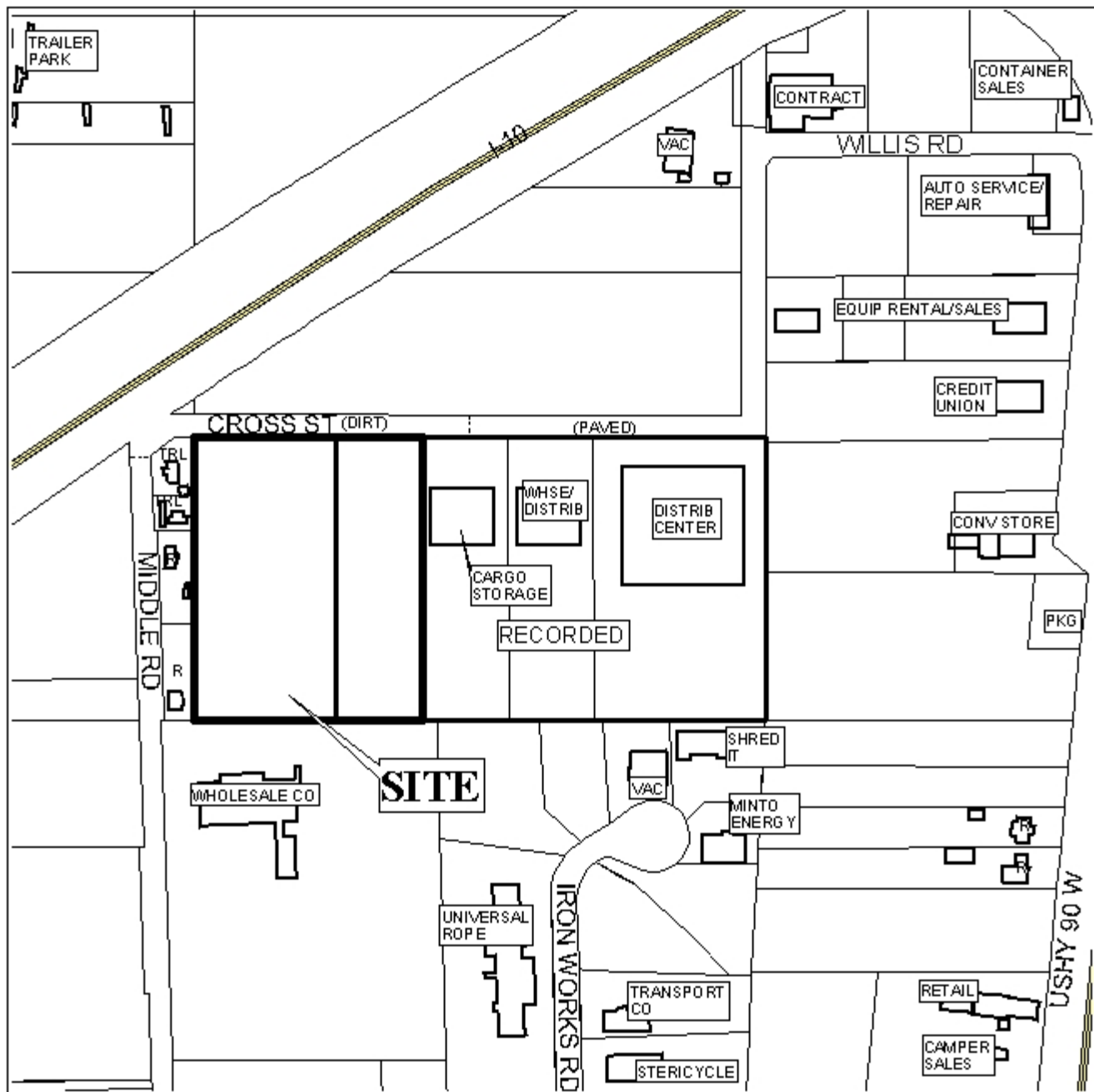
APPLICATION NUMBER Extension DATE July 7, 2005

APPLICANT Ram's Head Addition to Tillman's Corner Subdivision (formerly Head's Addition to Tillman's Corner Subdivision)

REQUEST Subdivision



**RAM'S HEAD ADDITION TO TILLMAN'S CORNER SUBDIVISION  
(FORMERLY HEAD'S ADDITION TO TILLMAN'S CORNER SUBDIVISION)**



APPLICATION NUMBER Extension DATE July 15, 2003

LEGEND

R-1	R-2	R-3	R-A	R-B	H-B	B-1	LB-2	B-2	B-3	B-4	B-5	I-1	I-2

