

EXTENSION

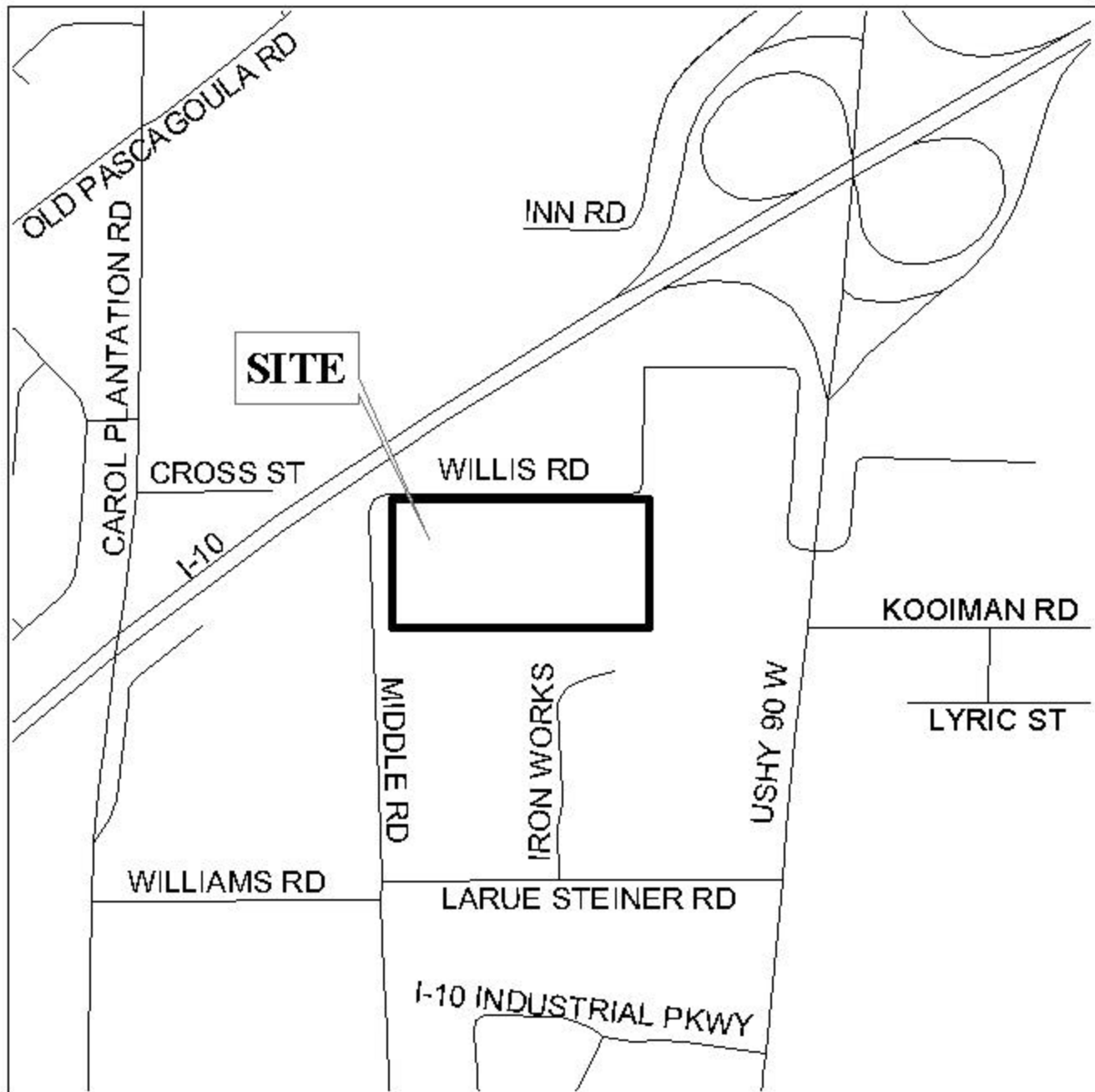
RAM'S HEAD ADDITION TO TILLMANS CORNER SUBDIVISION (FORMERLY HEAD'S ADDITION TO TILLMANS CORNER SUBDIVISION)

This is a request for a one-year extension of a previously approved 5-lot subdivision. The subdivision is located on the South side of Cross Street, 100'± East of Middle Road.

This is the first extension since the subdivision was originally approved in 2002. It should be noted that three lots have already been recorded. There have been no changes in conditions in the surrounding area that would affect the subdivision as previously approved; nor have there been changes to the regulations that would affect the previous approval.

Based upon the preceding, it is recommended that this request for extension be approved.

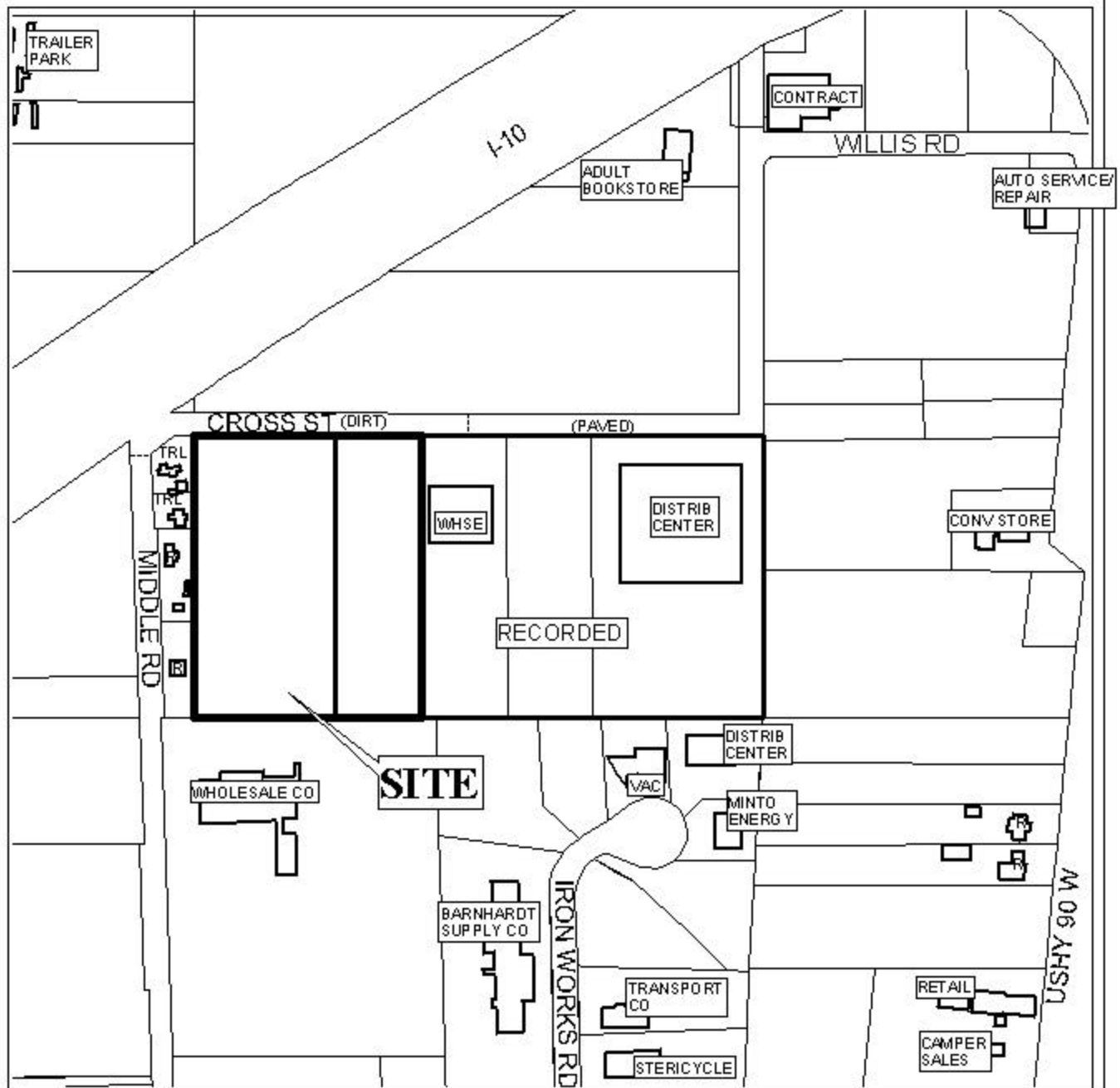
LOCATOR MAP



APPLICATION NUMBER Extension DATE July 24, 2003
APPLICANT Ram's Head Addition to Tillman's Corner
REQUEST Subdivision



RAM'S HEAD ADDITION TO TILLMAN'S CORNER SUBDIVISION



APPLICATION NUMBER Extension DATE July 24, 2003

LEGEND

