

## **EXTENSION**

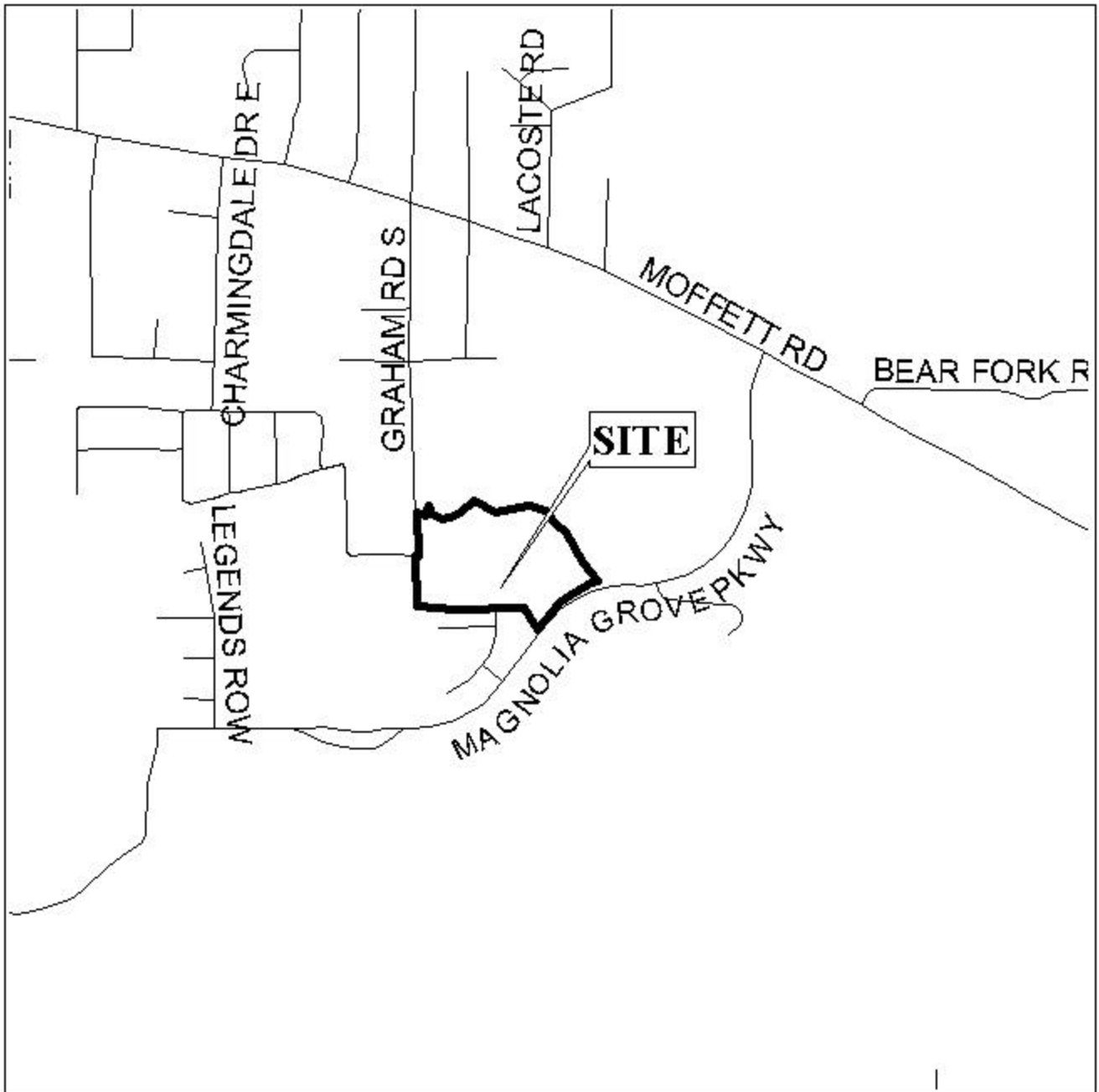
### **MAGNOLIA GROVE SUBDIVISION, THE GRANDE,** **UNIT TWO**

This is a request for a one-year extension of a previously approved 37-lot subdivision. The subdivision is located at the North terminus of Magnolia Grande Drive, extending North and West to Graham Road South, and East to the North side of Magnolia Grove Parkway.

This is the first extension since the subdivision was originally approved in 2002. There have been no changes in conditions in the surrounding area that would affect the subdivision as previously approved; nor have there been changes to the regulations that would affect the previous approval.

Based upon the preceding, it is recommended that this request for extension be approved.

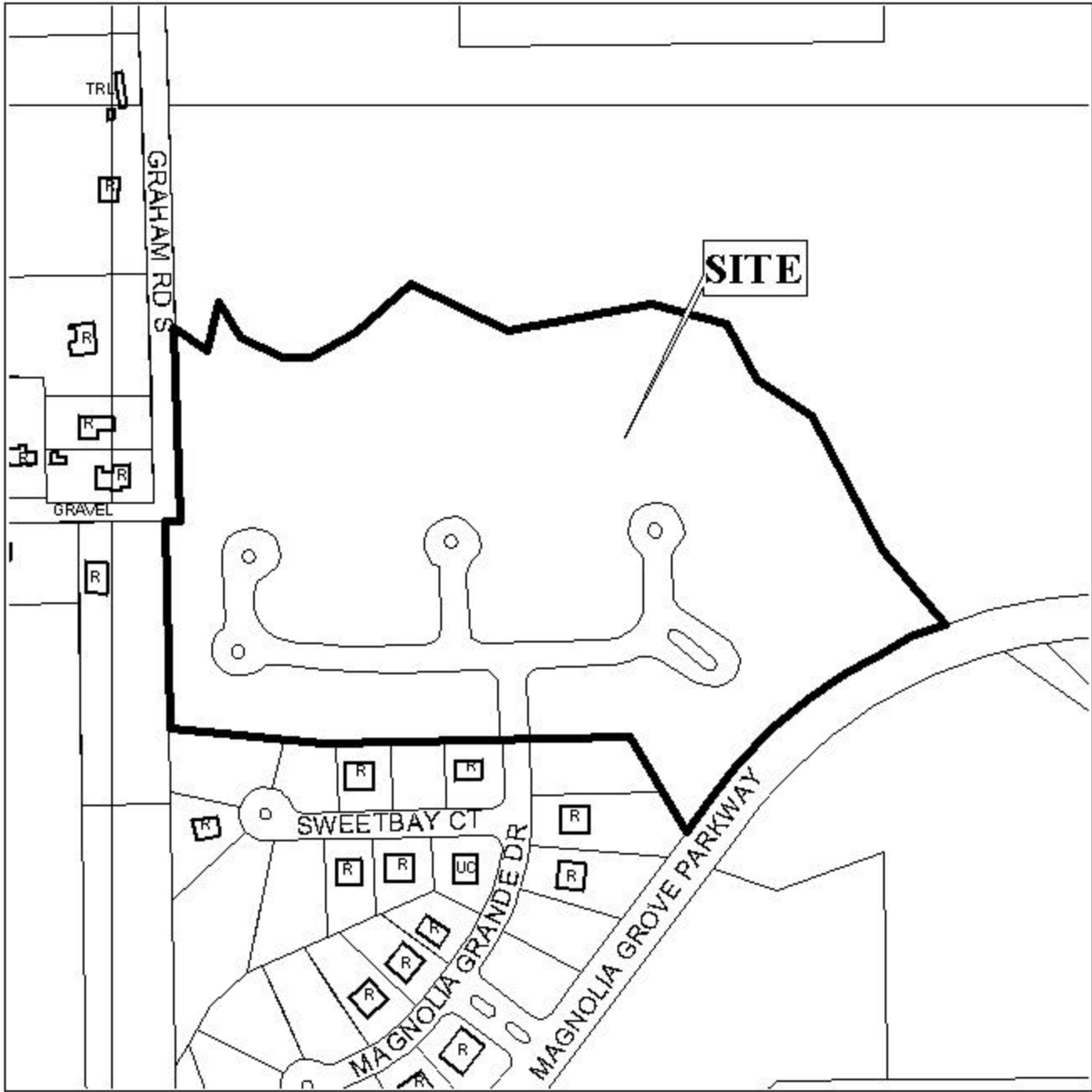
# LOCATOR MAP



APPLICATION NUMBER Extension DATE May 15, 2003  
APPLICANT Magnolia Grove Subdivision, The Grande, Unit Two  
REQUEST Subdivision



# MAGNOLIA GROVE SUBDIVISION, THE GRANDE, UNIT TWO



APPLICATION NUMBER Extension DATE May 15, 2003

APPLICANT Magnolia Grove Subdivision, The Grande, Unit Two

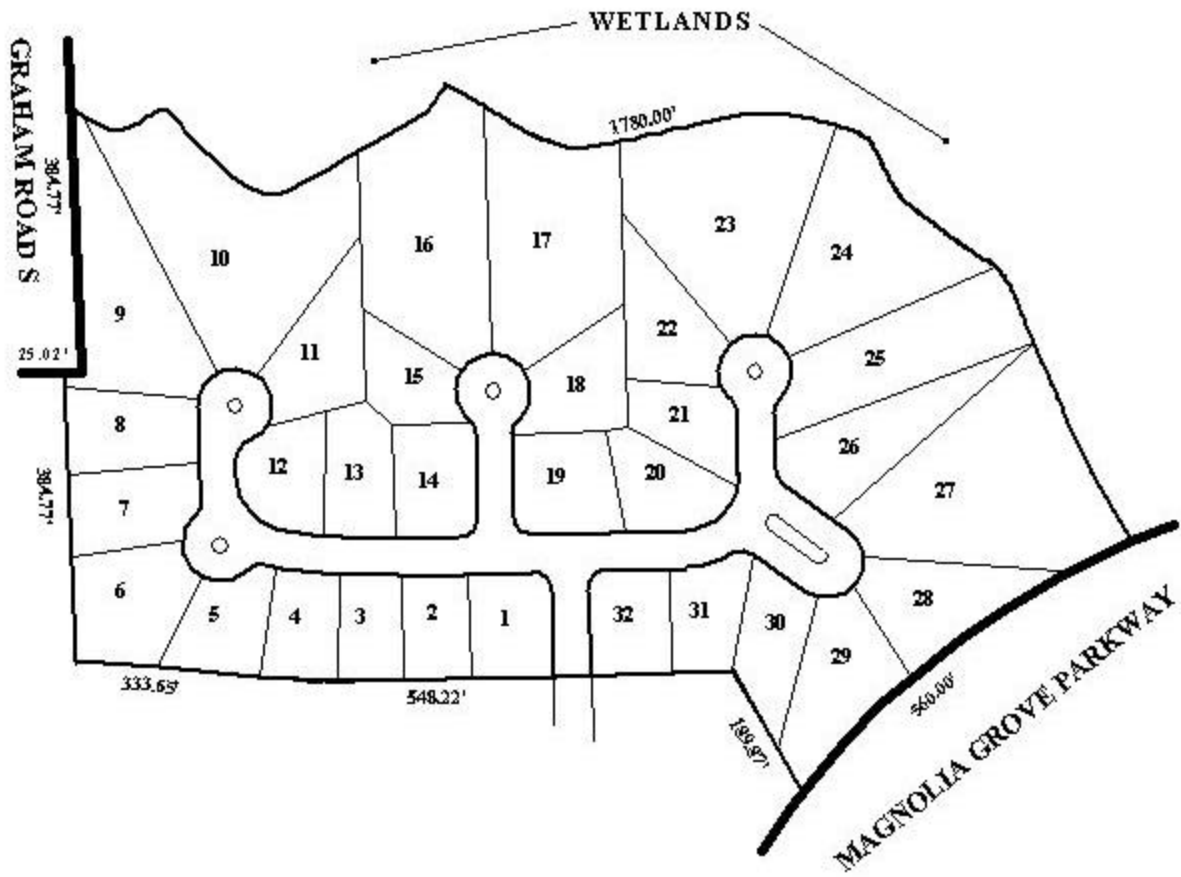
REQUEST Subdivision

LEGEND



# EXTENSION

## SUBDIVISION PLAT



APPLICATION NUMBER Extension DATE May 15, 2003  
APPLICANT Magnolia Grove Subdivision, The Grande, Unit Two  
USE/REQUEST Subdivision

