

EXTENSION

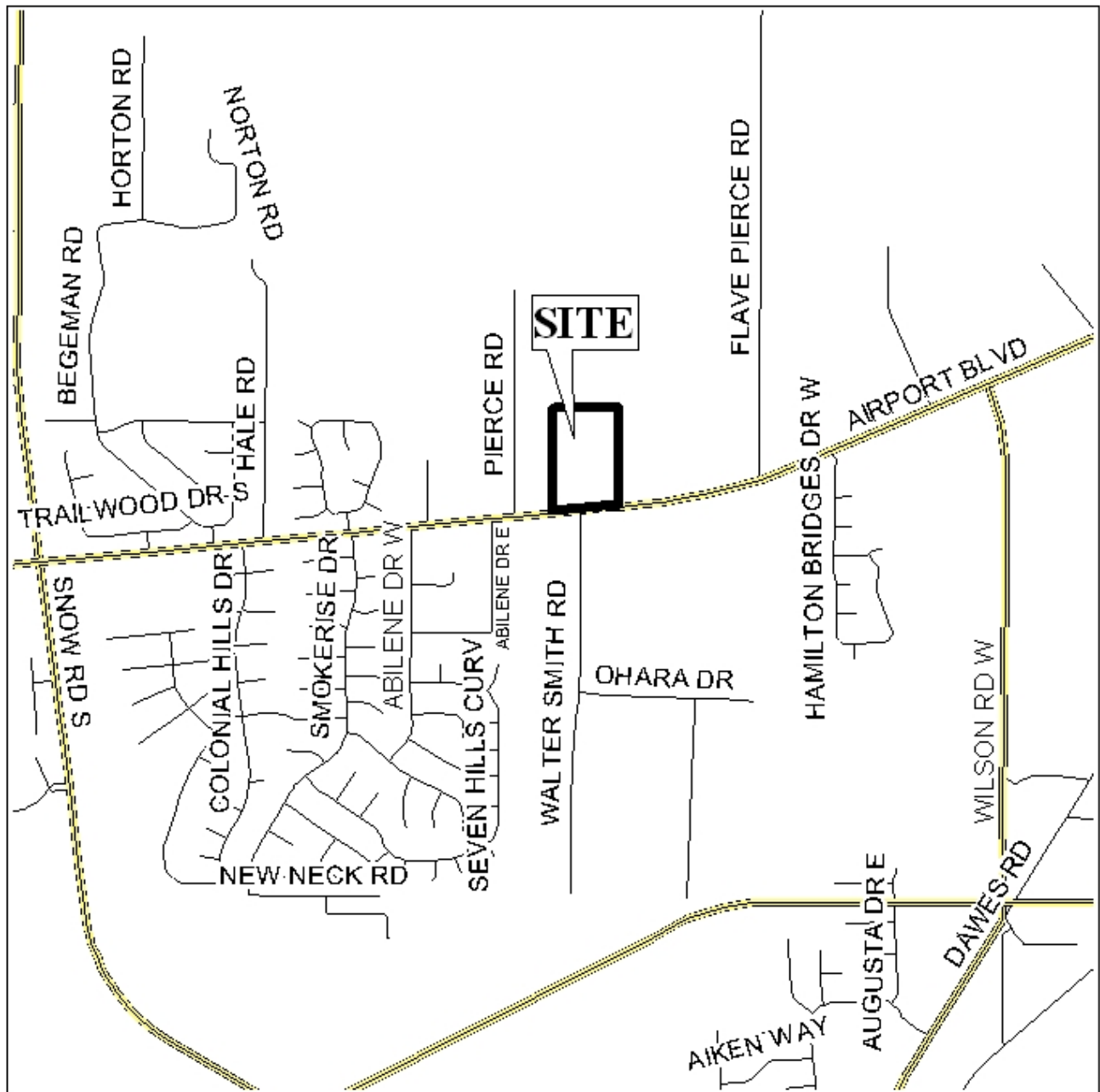
STEIN SUBDIVISION

This is a request for a one-year extension of a previously approved 2-lot subdivision. The subdivision is located on the North side of Airport Boulevard, 380'± East of Pierce Road.

This is the first request for an extension since the subdivision was originally approved in 2005. There have been no changes in conditions in the surrounding area that would affect the subdivision as previously approved, nor have there been changes to the regulations that would affect the previous approval.

Based on the preceding, it is recommended that this request for extension be approved. However, as there is no construction associated with the subdivision, it is also recommended that the applicant be advised that future extensions will be unlikely.

LOCATOR MAP



APPLICATION NUMBER Extension DATE December 7, 2006

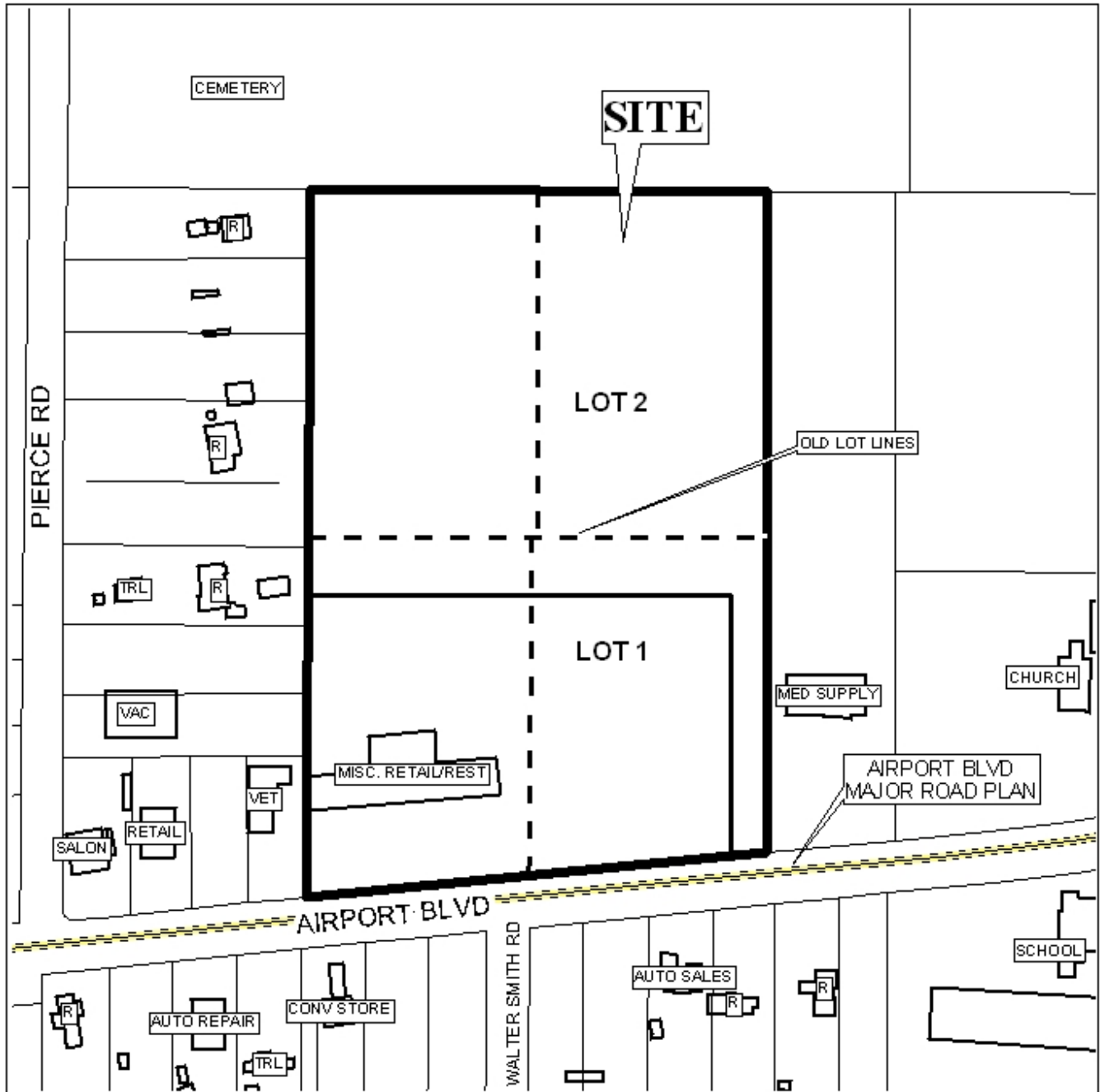
APPLICANT Stein Resubdivision Subdivision

REQUEST Subdivision



NTS

STEIN RESUBDIVISION SUBDIVISION



APPLICATION NUMBER Extension DATE December 7, 2006

LEGEND  R-1  R-2  R-3  R-4  R-5  H-B  B-1  LB-2  B-2  B-3  B-4  B-5  I-1  I-2



NTS