

## **EXTENSION**

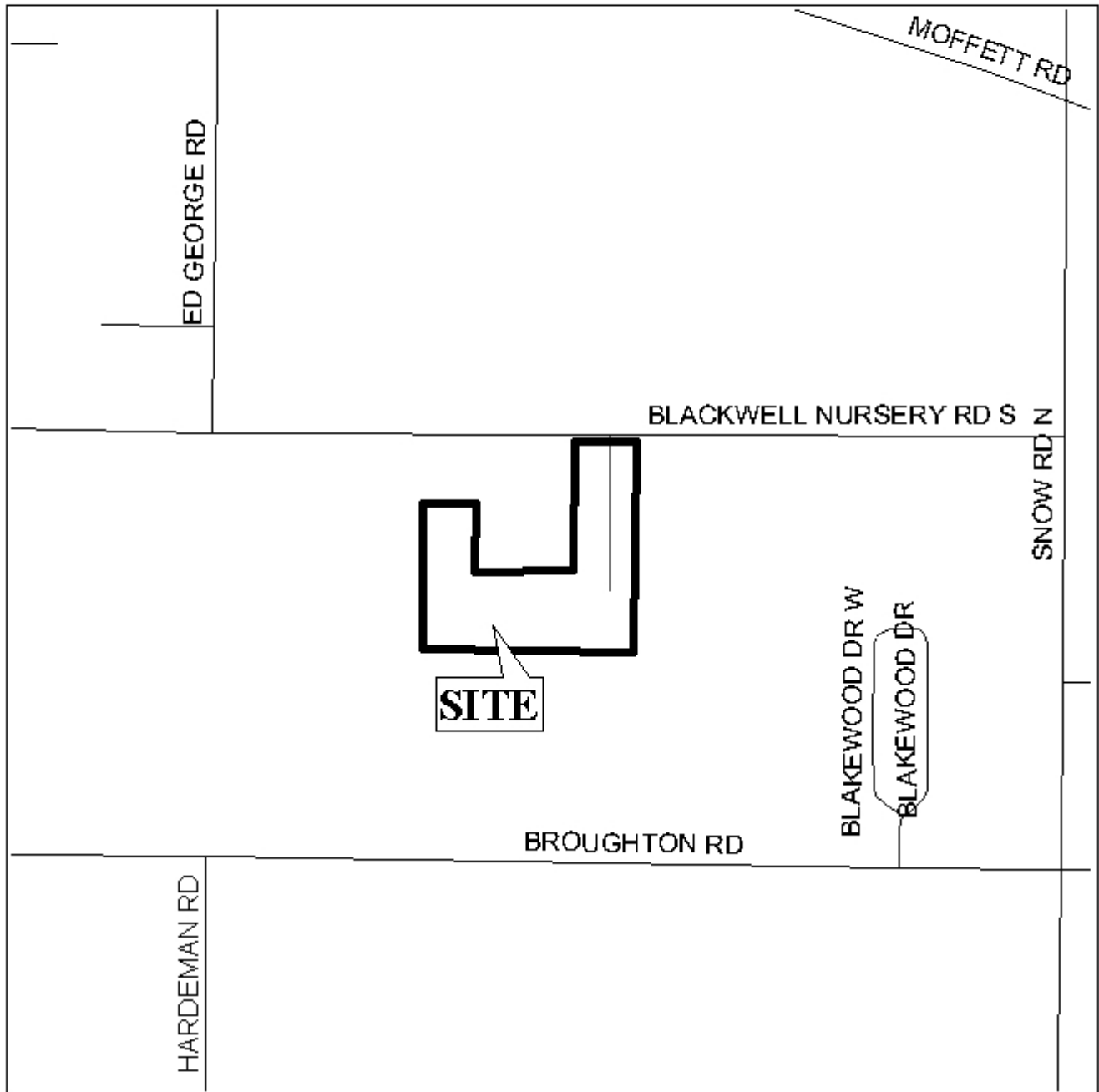
### **BLACKWELL OAKS SUBDIVISION**

This is a request for a one-year extension of a previously approved 65-lot subdivision. The subdivision is located on South side of Blackwell Nursery Road South, 1/2 mile  $\pm$  West of Snow Road.

This is the first extension since the subdivision was originally approved in 2002. As illustrated on the site plan, there has been one unit recorded. There have been no changes in conditions in the surrounding area that would affect the subdivision as previously approved; nor have there been changes to the Regulations that would affect the previous approval.

Based upon the preceding, it is recommended that this request for extension be approved.

## LOCATOR MAP



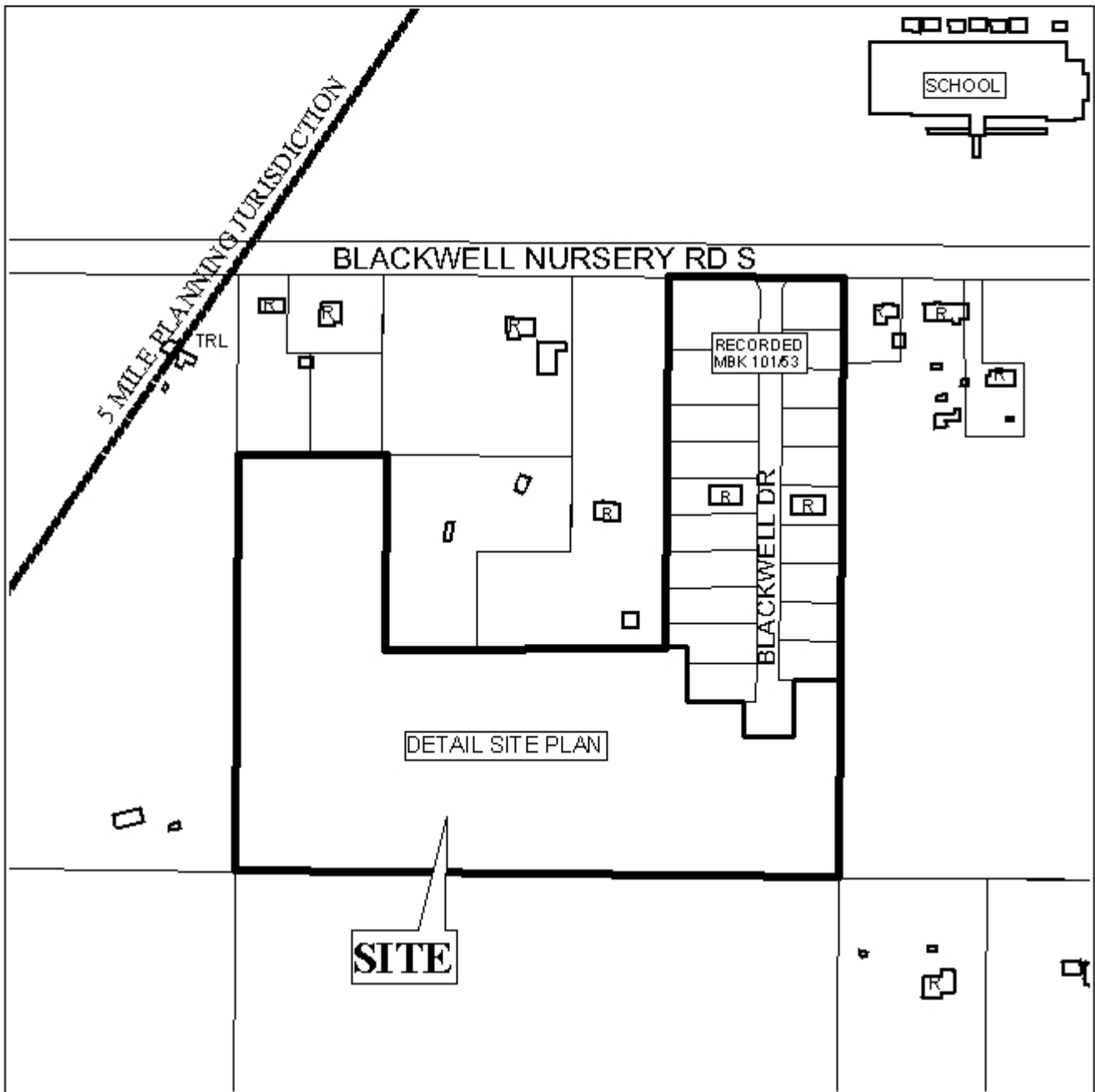
APPLICATION NUMBER Extension DATE August 5, 2004

APPLICANT Blackwell Oaks Subdivision

REQUEST Subdivision



# BLACKWELL OAKS SUBDIVISION



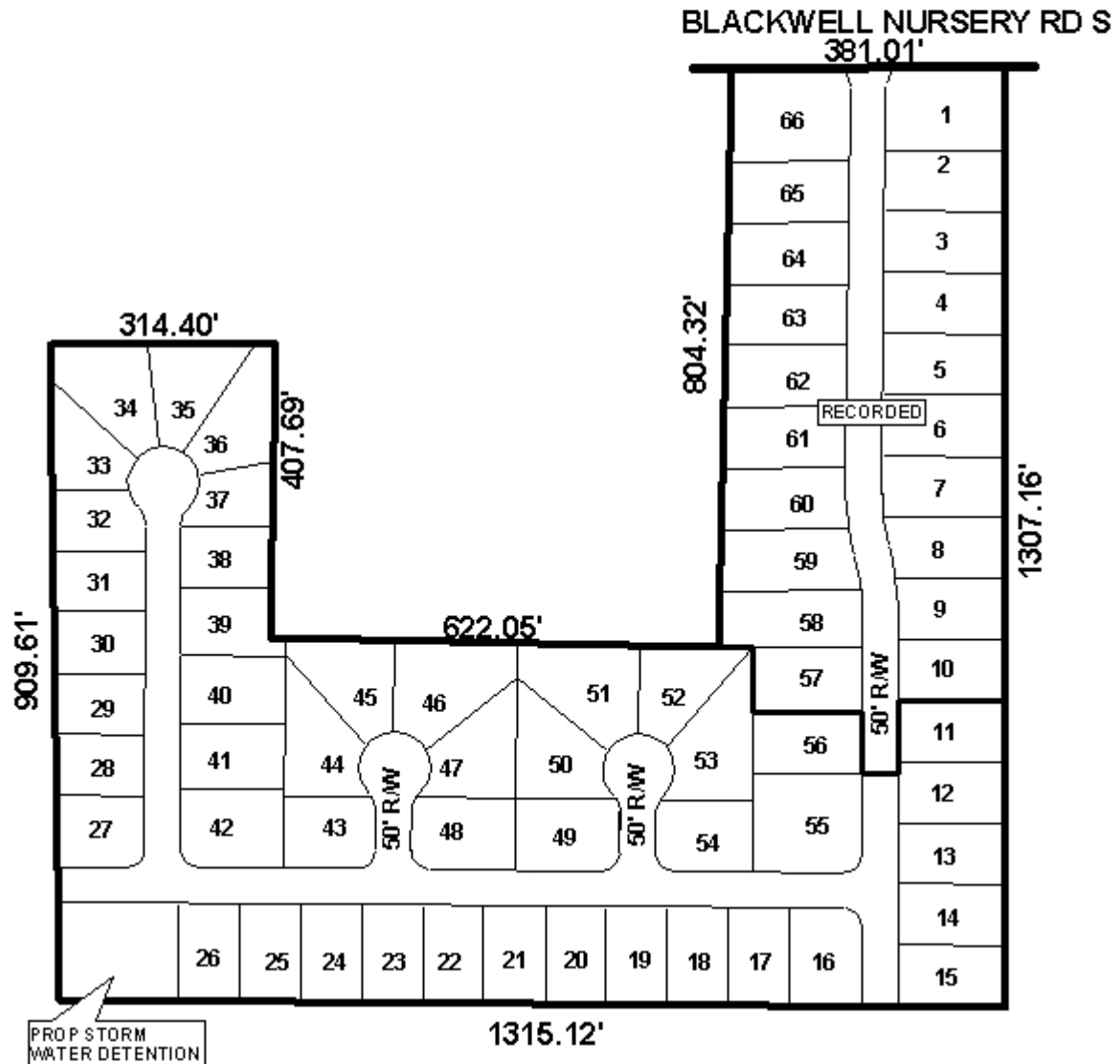
APPLICATION NUMBER Extension DATE August 5, 2004

## LEGEND



N  
NTS

# DETAIL SITE PLAN



APPLICATION NUMBER Extension DATE August 5, 2004

APPLICANT Blackwell Oaks Subdivision

REQUEST Subdivision



NTS