

LEIGHTON COMMONS SUBDIVISION

This is a request for a one-year extension of a previously approved 64-lot subdivision. The subdivision is located at the East side of Riviere du Chien Road, 240'+ South of the South terminus of Lloyd Station Road.

There have been no extensions since the subdivision was originally approved, and no units have been recorded.

One of the conditions of the original approval for this subdivision was the following:

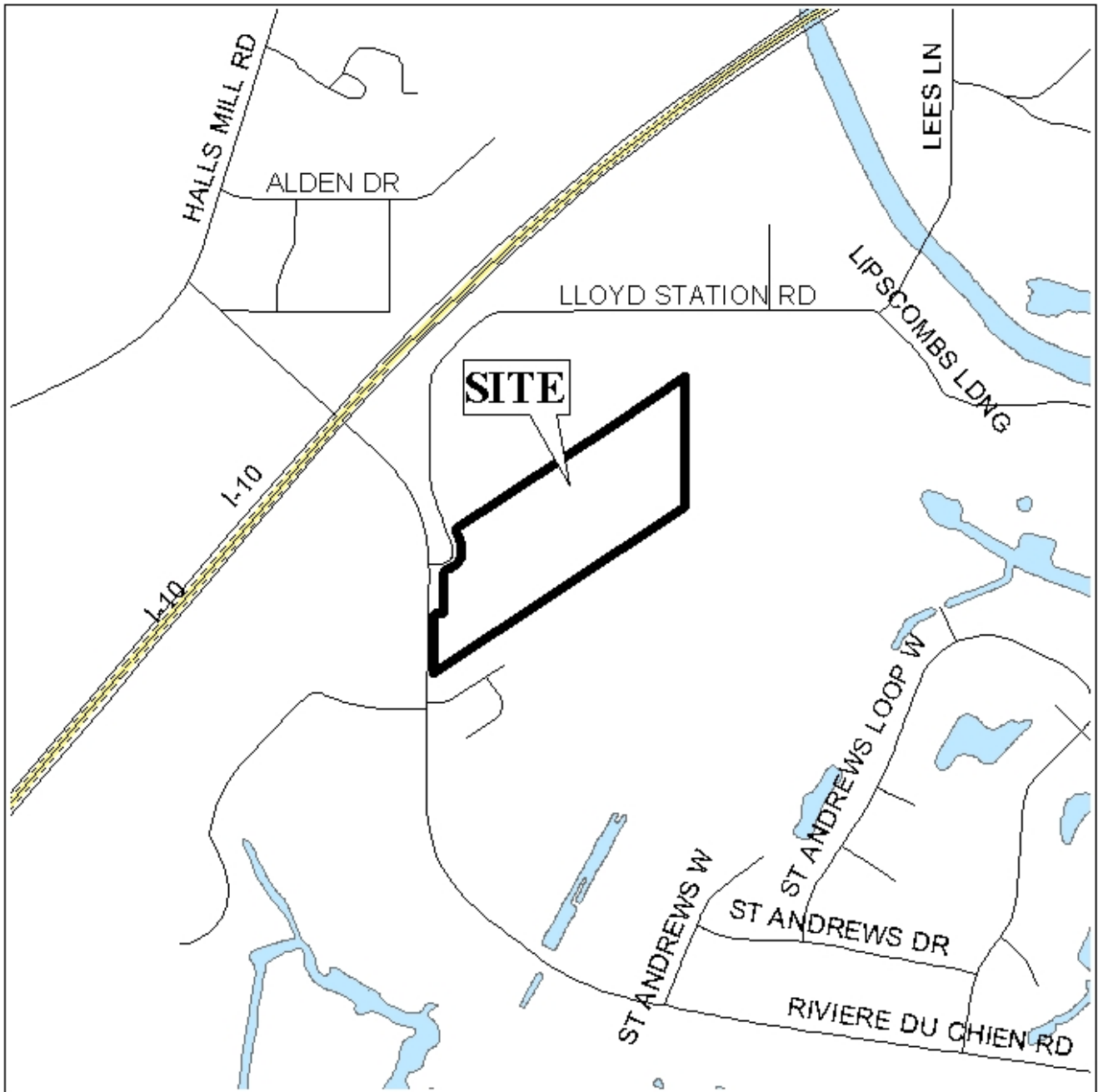
- 4) no permits are to be issued for street construction in Leighton Commons until a new application showing a corresponding street stub has been submitted for the expired Leighton Place Subdivision to the south;*

A new subdivision plat for the Leighton Place Subdivision was approved by the Planning Commission at its July 20, 2006 meeting. The approved plat did indicate a street stub, but not in a location that would result in a connection between Leighton Commons and Leighton Place. The applicant, common to both Leighton Commons and Leighton Place, provided a letter for the July 2006 stating that he would ensure that both subdivisions were linked as required. The first phase of Leighton Place has been recorded, however, the area where a street stub is required is reserved for future development.

Although the applicant has stated that a street connection will be made between Leighton Commons and Leighton Place, no plats have been provided depicting the required connection.

Based on the preceding, it is recommended that this request for extension be denied.

LOCATOR MAP



APPLICATION NUMBER Extension DATE October 5, 2006

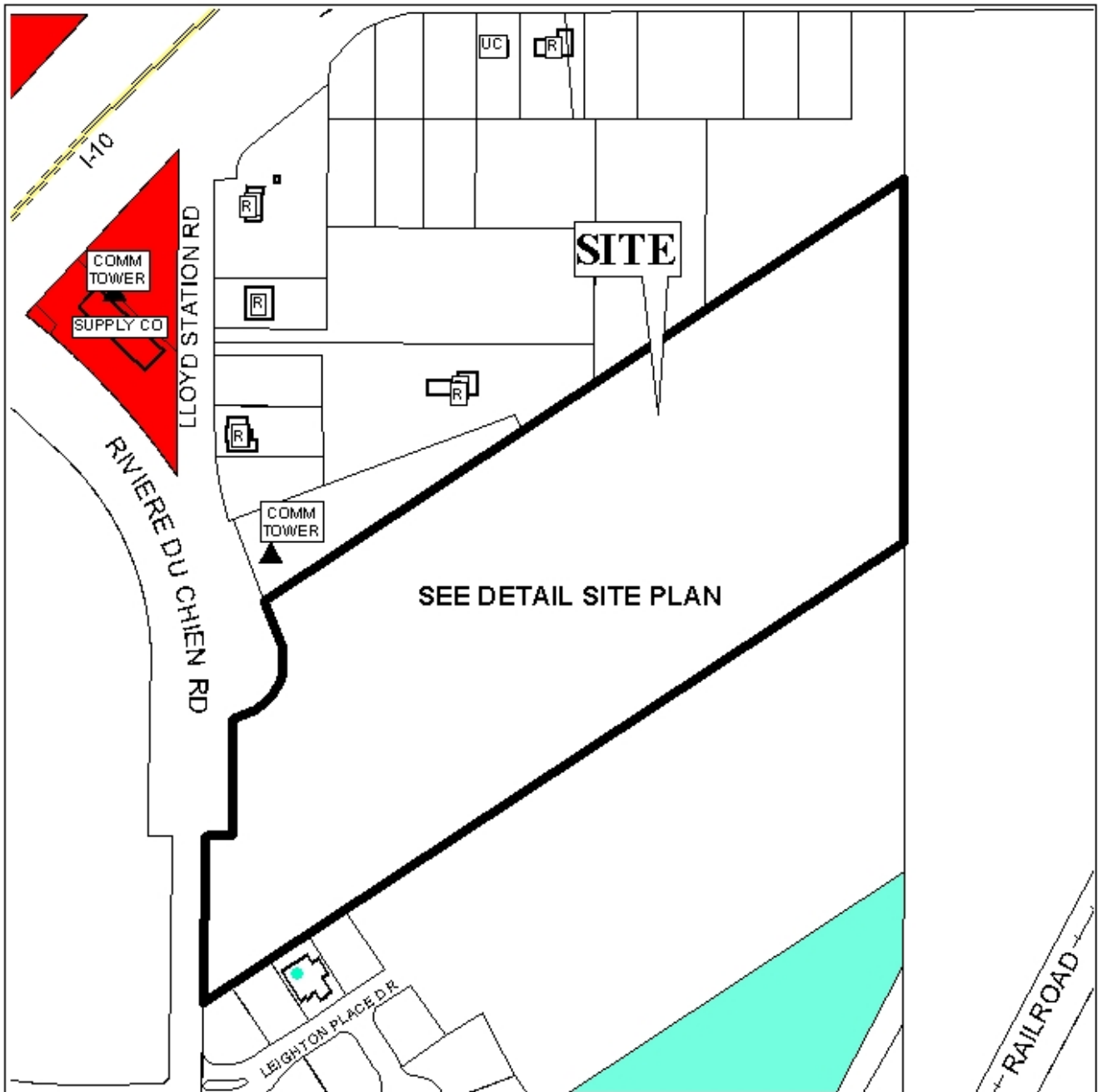
APPLICANT Leighton Commons Subdivision

REQUEST Subdivision



NTS

LEIGHTON COMMONS SUBDIVISION



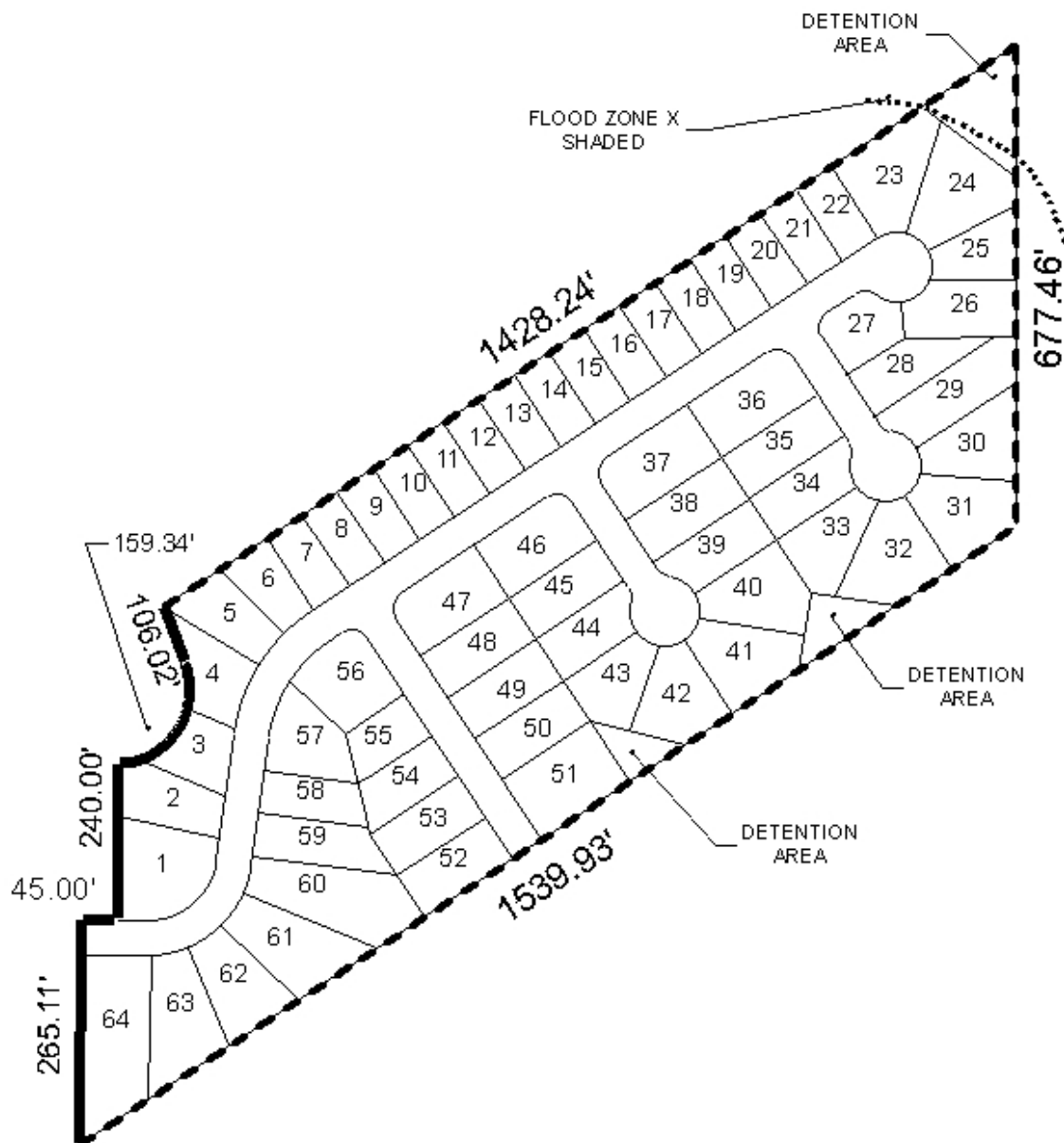
APPLICATION NUMBER Extension DATE October 5, 2006

LEGEND

R-1	R-2	R-3	R-A	R-B	H-B	B-1	LB-2	B-2	B-3	B-4	B-5	I-1	I-2
-----	-----	-----	-----	-----	-----	-----	------	-----	-----	-----	-----	-----	-----



DETAIL SITE PLAN



APPLICATION NUMBER Extension DATE October 5, 2006

APPLICANT Leighton Commons Subdivision

REQUEST Subdivision



NTS