

EXTENSION

RAM'S HEAD ADDITION TO TILLMAN'S CORNER SUBDIVISION (FORMERLY HEAD'S ADDITION TO TILLMAN'S CORNER SUBDIVISION)

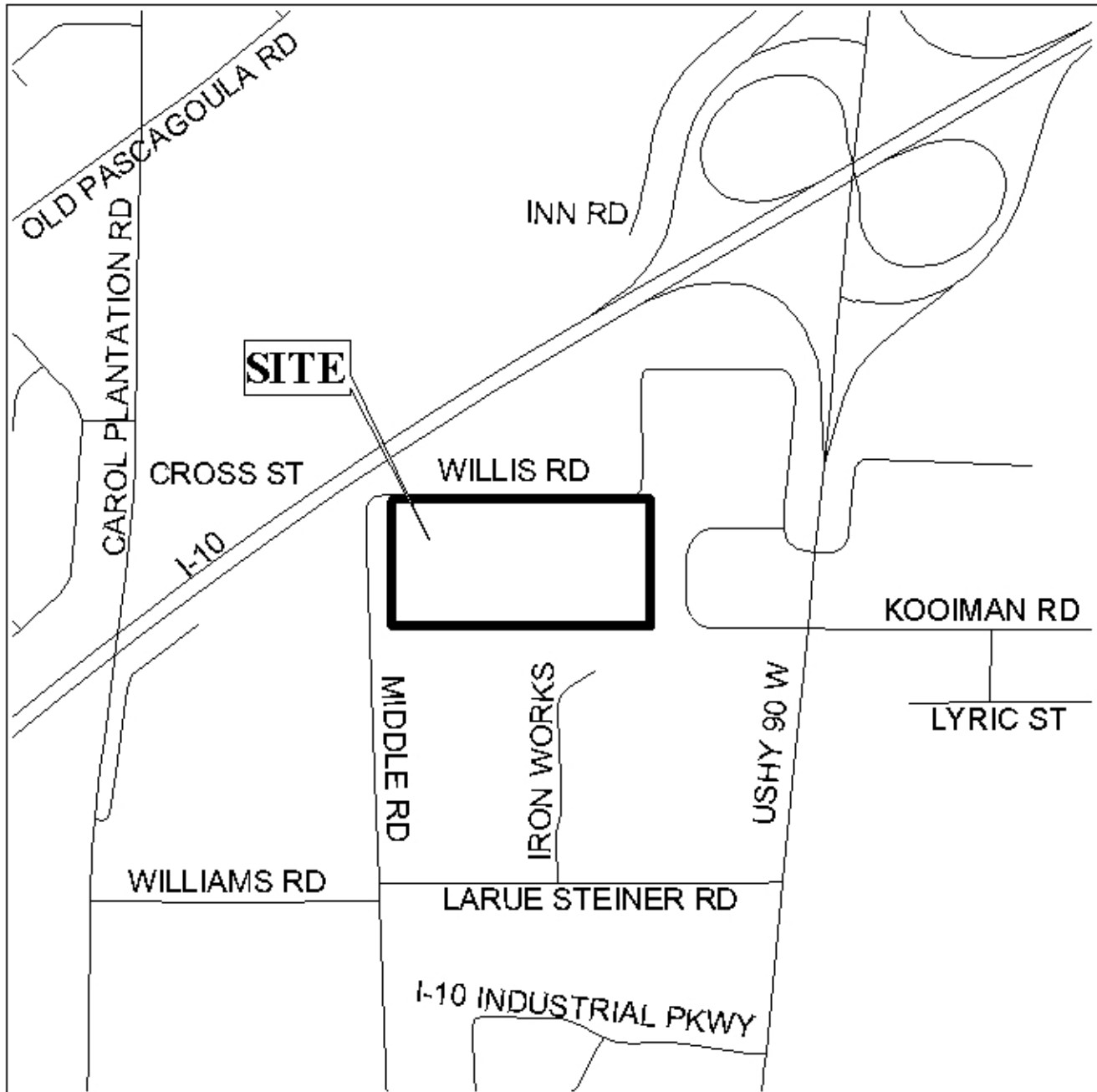
This is a request for a one-year extension of a previously approved 5-lot subdivision. The subdivision is located on the South side of Cross Street, 100'± East of Middle Road.

This is the fourth extension since the subdivision was originally approved in 2002. Since 2002, there have been three lots recorded as Unit One and developed. However, the remaining lots have not been recorded.

There have been no changes in conditions in the surrounding area that would affect the subdivision as previously approved; nor have there been changes to the Regulations that would affect the previous approval. However, as no road construction was proposed for the project and all that was required was the recording of the final plat for the remaining lots, the applicant should be informed that a fifth extension is unlikely.

Based upon the preceding, it is recommended that this request for extension be approved; however, a fifth extension is unlikely.

LOCATOR MAP

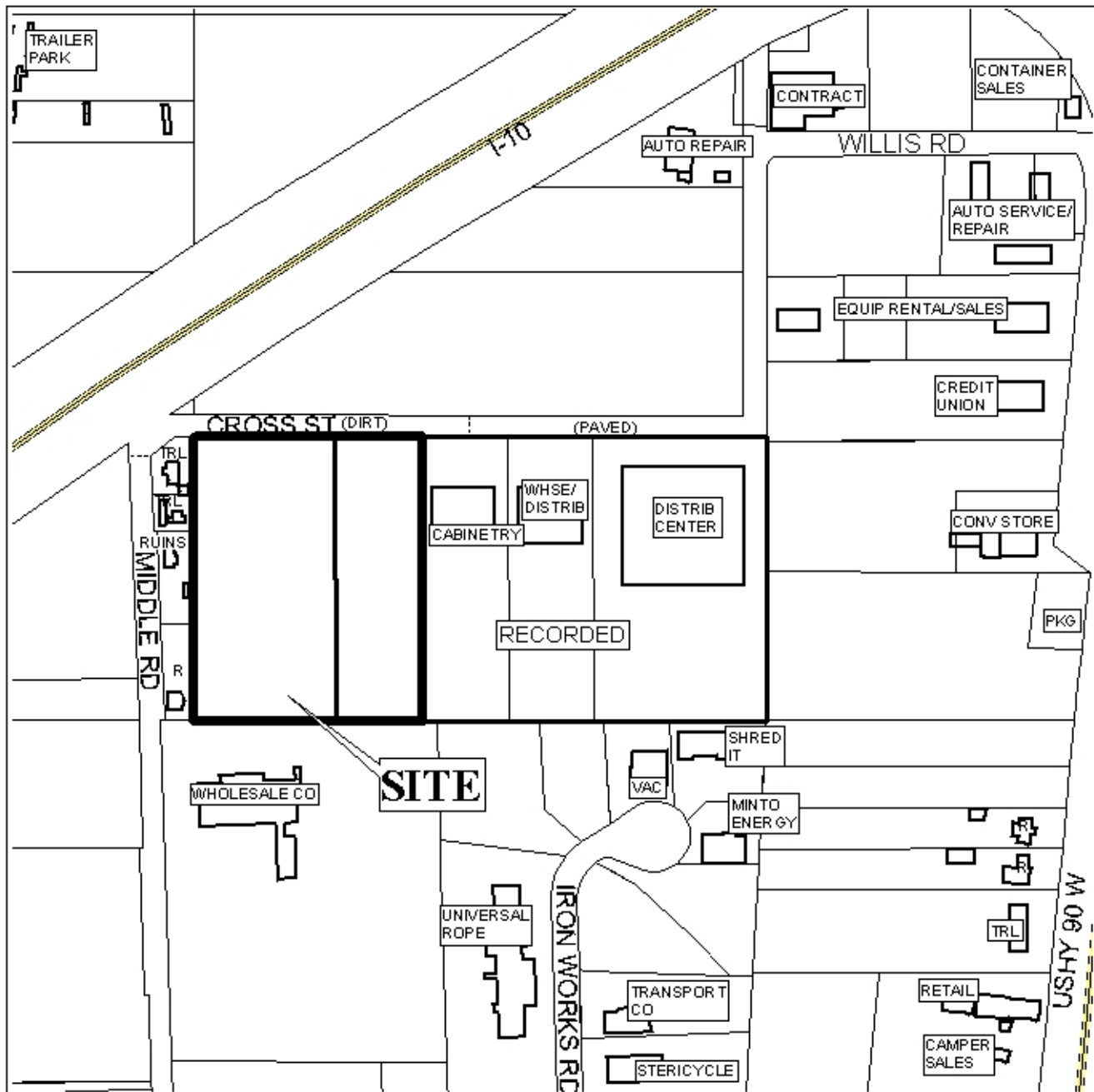


APPLICATION NUMBER Extension DATE July 6, 2006
APPLICANT Ram's Head Addition to Tillman's Corner Subdivision (formerly
Head's Addition to Tillman's Corner Sub division)
REQUEST Subdivision



NTS

**RAM'S HEAD ADDITION TO TILLMAN'S CORNER SUBDIVISION
(FORMERLY HEAD'S ADDITION TO TILLMAN'S CORNER SUBDIVISION)**



APPLICATION NUMBER Extension DATE July 6, 2006

LEGEND

R-1	R-2	R-3	R-A	R-B	H-B	B-1	LB-2	B-2	B-3	B-4	B-5	I-1	I-2



NTS