

## **BUTLER ADDITION TO TURMAC DRIVE** **SUBDIVISION**

Engineering Comments: Must comply with the Mobile County Flood Damage Prevention Ordinance.

The plat illustrates the proposed 2 lot, 3.9  $\pm$  acres subdivision which is located on the North side of Turmac Drive, 820'  $\pm$  West of Dykes Road. The subdivision is served by public water and individual septic systems.

The purpose of this application is to move an interior lot line.

As a means of access management, a note should be placed on the final plat stating that Lots A and B are limited to one curb cut each to Turmac Drive, with the size, location and design to be approved by County Engineering.

This site is located in the County, thus a note should be placed on the final plat stating that any lots which are developed commercially and adjoin residentially developed property must provide a buffer, in compliance with Section V.A.7. of the Subdivision Regulations.

The plat meets the minimum requirements of the Subdivision Regulations and is recommended for Tentative Approval subject to the following conditions: 1) the placement of a note on the final plat stating that Lots A and B are limited to one curb cut each to Turmac Drive, with the size, location and design to be approved by County Engineering; and 2) the placement of a note on the final plat stating that any lots which are developed commercially and adjoin residentially developed property must provide a buffer, in compliance with Section V.A.7. of the Subdivision Regulations.

## LOCATOR MAP

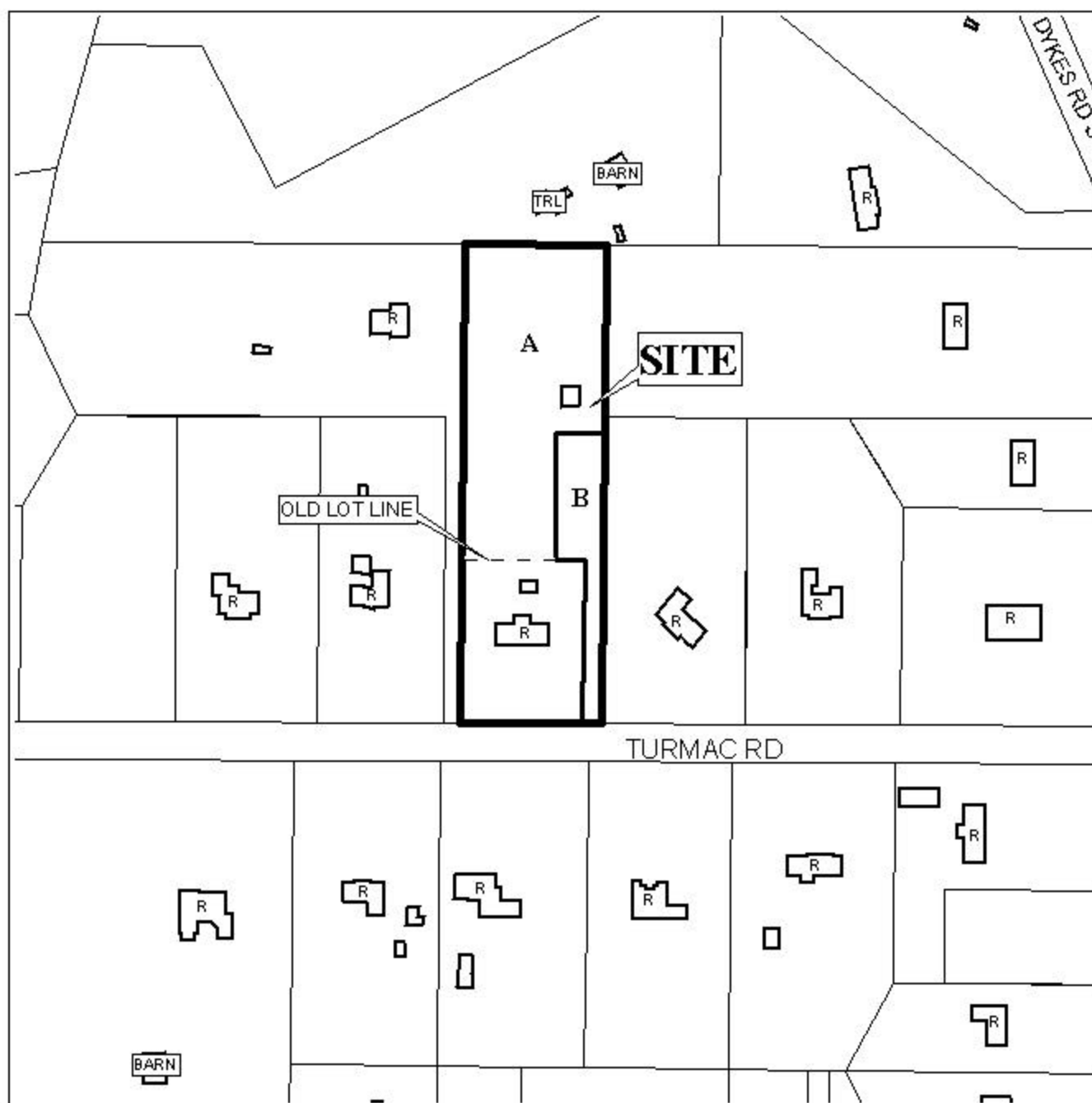


APPLICATION NUMBER 16 DATE September 4, 2003  
APPLICANT Butler Addition to Turmac Drive Subdivision  
REQUEST Subdivision



NTS

# BUTLER ADDITION TO TURMAC DRIVE SUBDIVISION



APPLICATION NUMBER 16 DATE September 4, 2003

LEGEND

