

BREVARD ADDITION TO
COUNTRY CLUB ESTATES SUBDIVISION,
RESUBDIVISION OF LOTS 1, 2 and 3

Engineering Comments: Must comply with all stormwater and flood control ordinances. Any work performed in the right-of-way will require a right-of-way permit.

Traffic Engineering Comments: Driveway numbers, size, location and design to be approved by Traffic Engineering and conform to AASHTO standards.

Urban Forestry Comments: Property to be developed in compliance with state and local laws that pertain to tree preservation and protection on both city and private properties (State Act 61-929 and City Code Chapters 57 and 64).

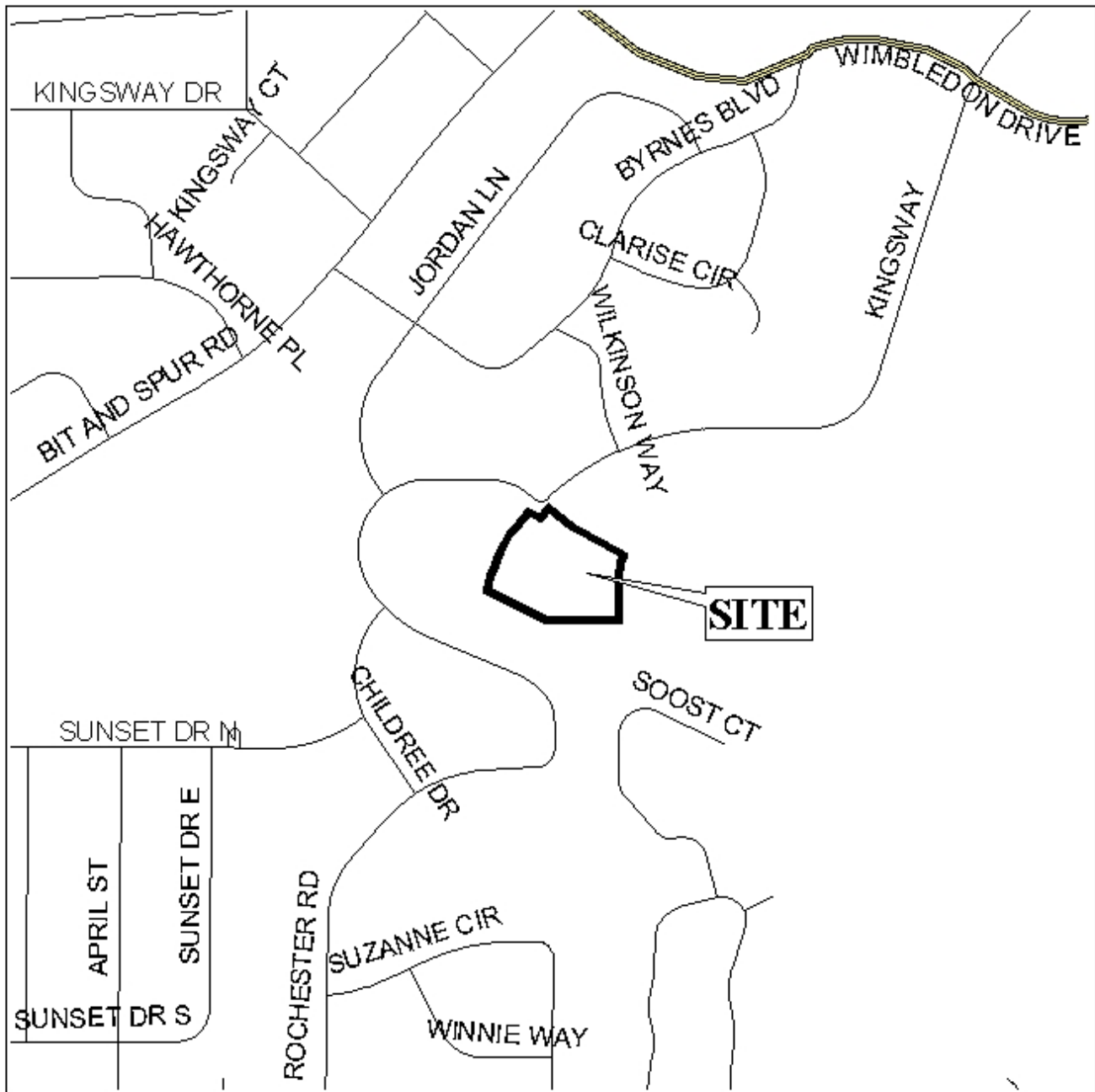
Fire Department Comments: All commercial projects shall comply with the 2003 International Fire Code and Appendices B through G as adopted by the City Of Mobile on July 6, 2004. All One- or Two-Family residential developments shall comply with Appendices B, C and D of the 2003 International Fire Code as adopted by the City of Mobile on July 6, 2004.

The plat illustrates the proposed 3.6± acre, one lot subdivision which is located at 71 Kingsway (East side of Kingsway at its South terminus), and is in City Council District 5. The subdivision is served by city water and sanitary facilities.

The purpose of this subdivision is to combine three legal lots of record into one lot of record.

The plat meets the minimum requirements of the Subdivision Regulations and is recommended for Tentative Approval.

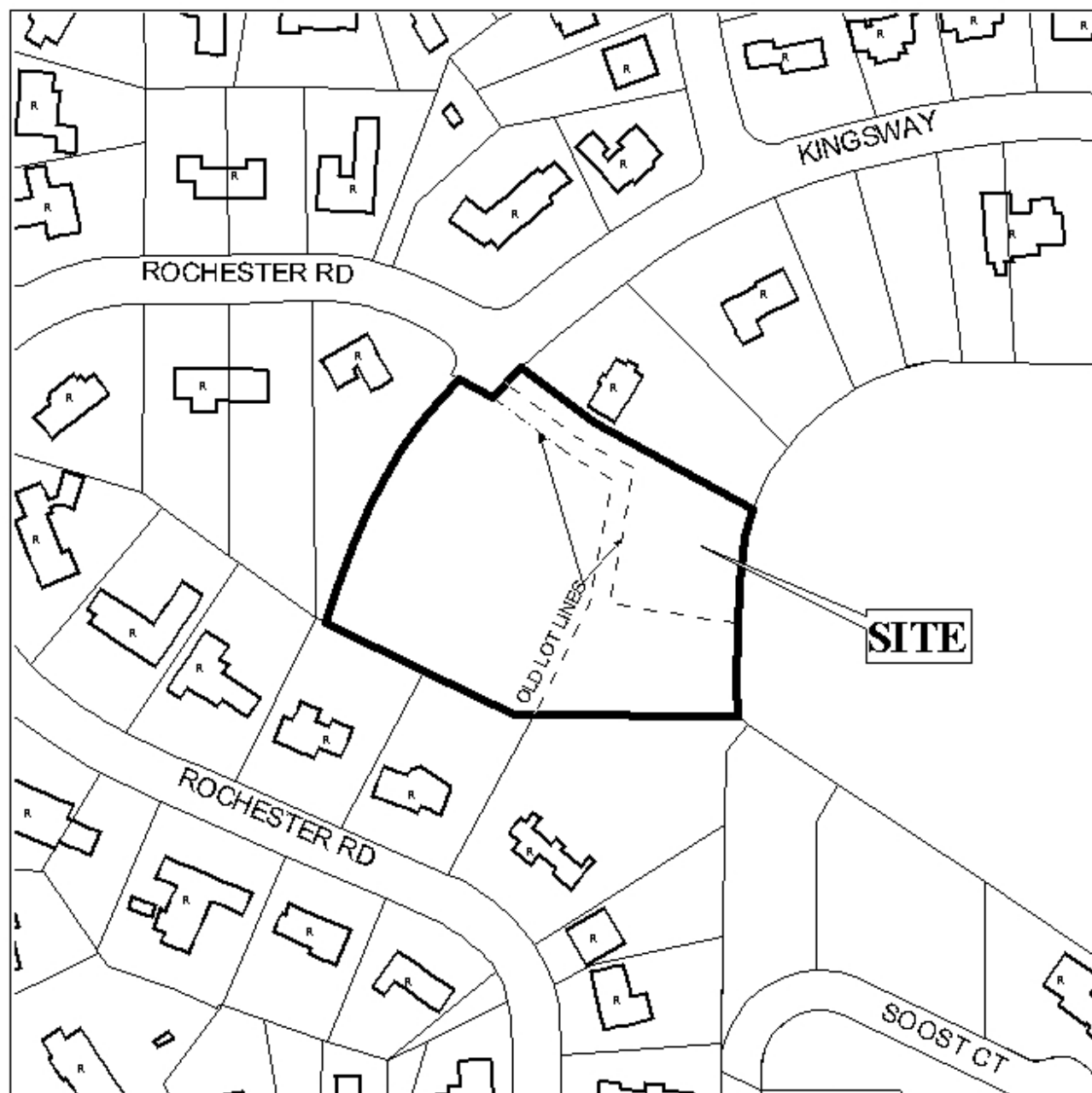
LOCATOR MAP



APPLICATION NUMBER 1 DATE February 2, 2006
APPLICANT Brevard Add to Country Club Estates Sub, Resub of Lots 1, 2, And 3
REQUEST Subdivision



BREVARD ADDITION TO COUNTRY CLUB ESTATES SUBDIVISION, RESUBDIVISION OF LOTS 1, 2, AND 3



APPLICATION NUMBER 1 DATE February 2, 2006

LEGEND

R-1	R-2	R-3	R-A	R-B	H-B	B-1	LB-2	B-2	B-3	B-4	B-5	I-1	I-2

