

AUGUSTA SUBDIVISION, UNIT THREE

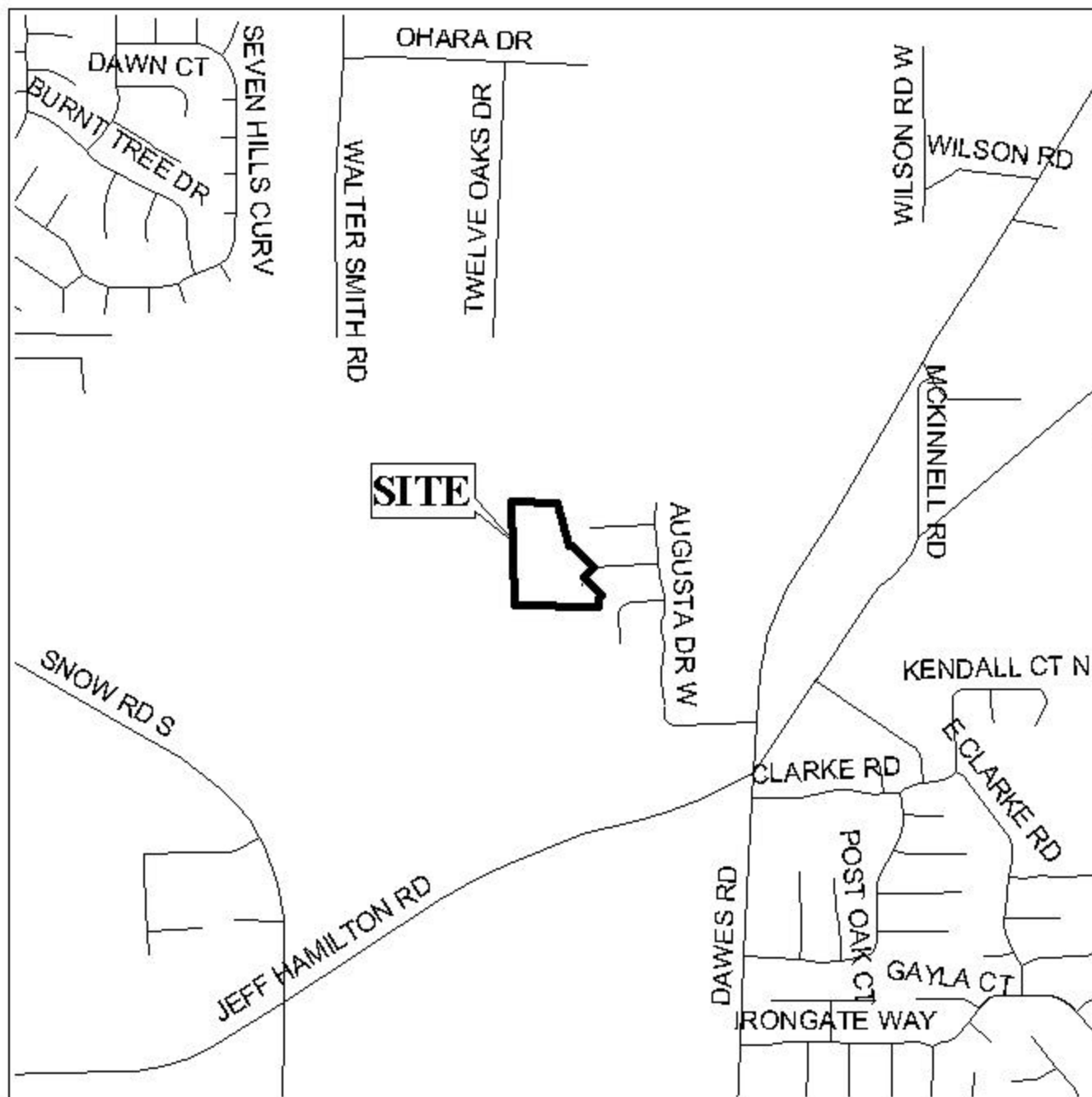
Engineering Comments: Must comply with the Mobile County Flood Damage Prevention Ordinance.

The plat illustrates the proposed 10.05 ± acres, 25 lot subdivision which is located on the West terminus of Aiken Way, adjacent to the West side of Augusta Subdivision, Unit Two, Phase Two. The subdivision is served by public water and sanitary sewer.

This unit of Augusta was illustrated as future development in Augusta Second Revision, which was approved by the Commission in November 2000. With the approval of this 25-lot addition, 116 lots will have only one point of access. As access management would be a concern, the construction and dedication of a second connection, to County Engineering standards, should be required to Woodberry Forest (formerly known as Addition to Augusta). In addition, the placement of a note on the final plat stating that no additional units of Augusta will be recorded until the second connection to Woodberry Forest is dedicated and constructed to County Engineering standards.

The plat meets the minimum requirements of the Subdivision Regulations and is recommended for Tentative Approval subject to the following condition: 1) that no additional units of Augusta be recorded until the second connection to Woodberry Forest is constructed and dedicated to County Engineering standards.

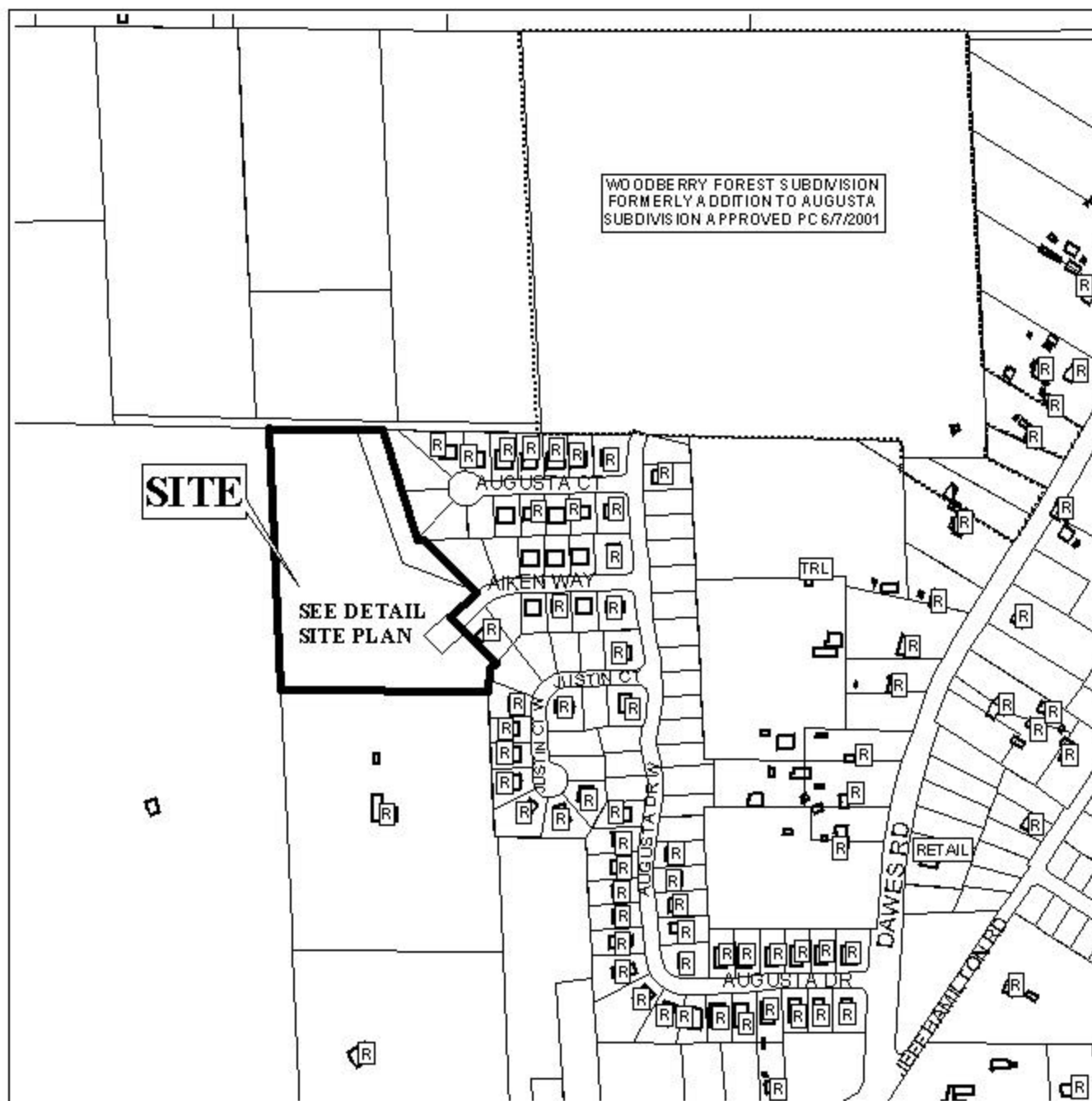
LOCATOR MAP



APPLICATION NUMBER 11 DATE April 17, 2003
APPLICANT Augusta Subdivision, Unit Three
REQUEST Subdivision



AUGUSTA SUBDIVISION, UNIT THREE

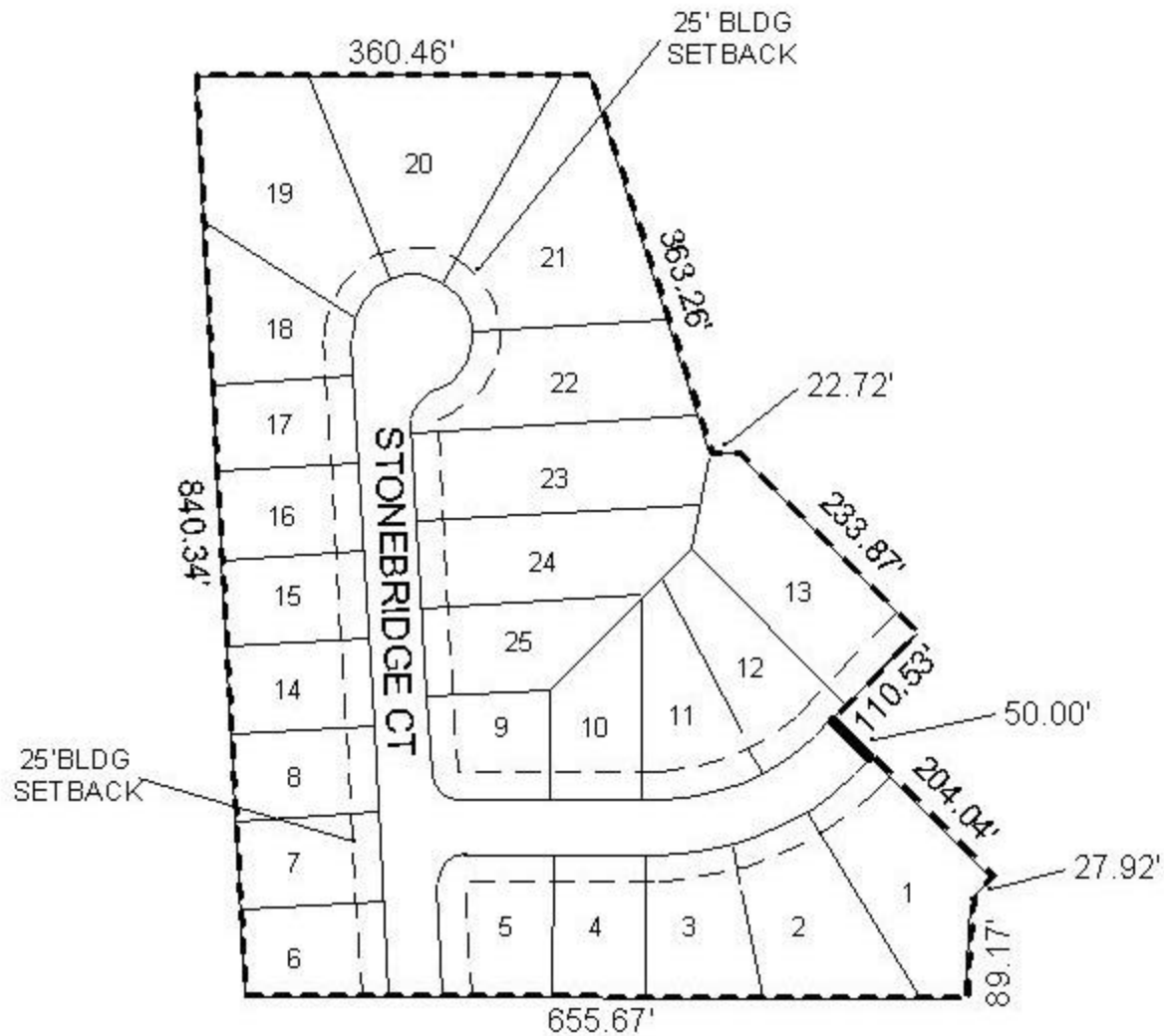


APPLICATION NUMBER 11 DATE April 17, 2003

LEGEND



DETAIL SITE PLAN



APPLICATION NUMBER 11 DATE April 17, 2003

APPLICANT Augusta Subdivision, Unit Three

USE/REQUEST Subdivision



