

EXTENSION

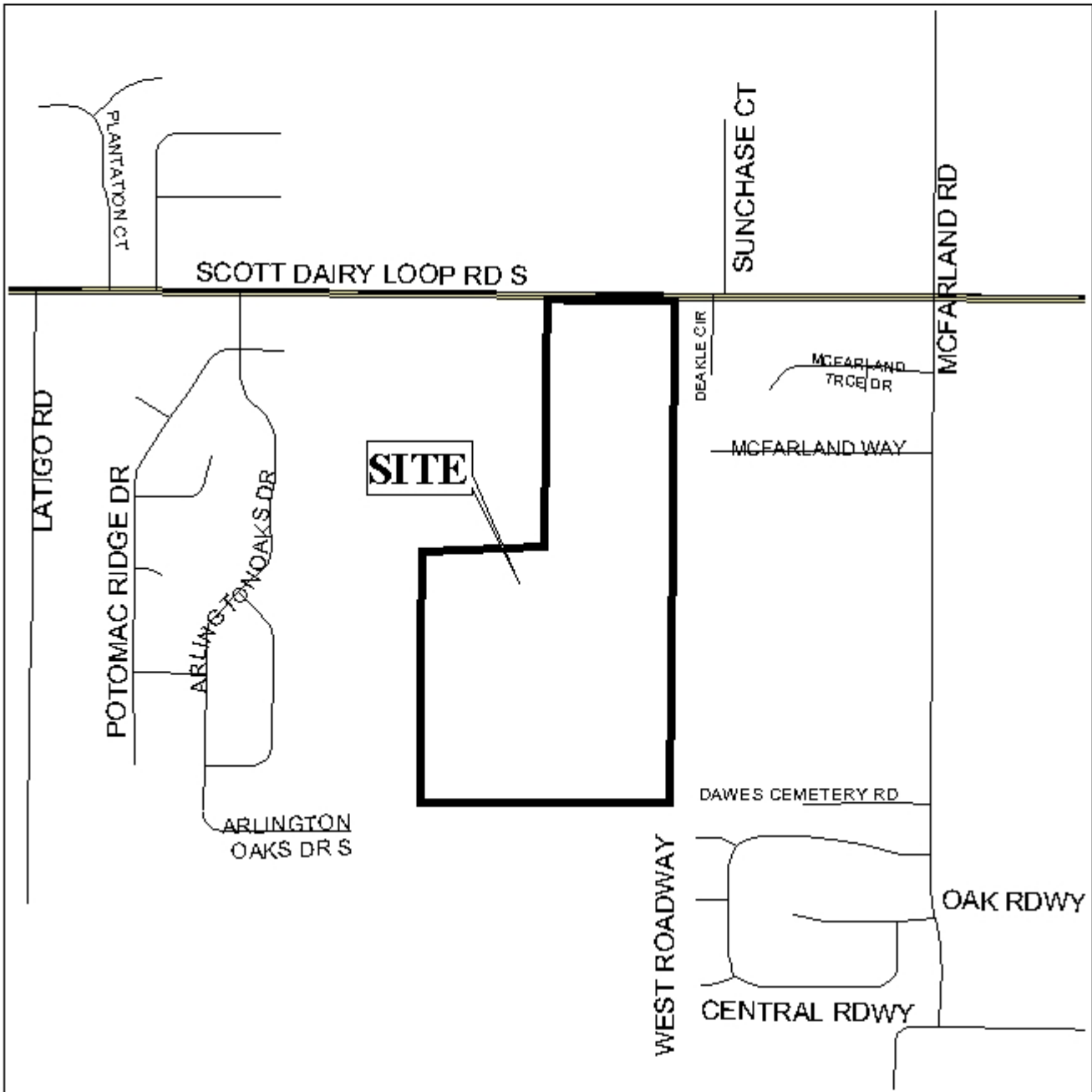
MAGNOLIA DOWNS SUBDIVISION

This is a request for a one-year extension of a previously approved 18-lot subdivision. The subdivision is located on the South side of Scott Dairy Loop, 3/10 mile \pm West of McFarland Road.

This is the first extension since the subdivision was originally approved in 2004. There have been no changes in conditions in the surrounding area that would affect the subdivision as previously approved; nor have there been changes to the Regulations that would affect the previous approval. However, the applicant submitted a letter stating that roadway construction in the subdivision has been completed, but problems with the contractors has delayed completion of the storm water detention basins. A new contractor has been hired and the detention basins will be completed soon.

Based upon the preceding, it is recommended that this request for extension be approved.

LOCATOR MAP

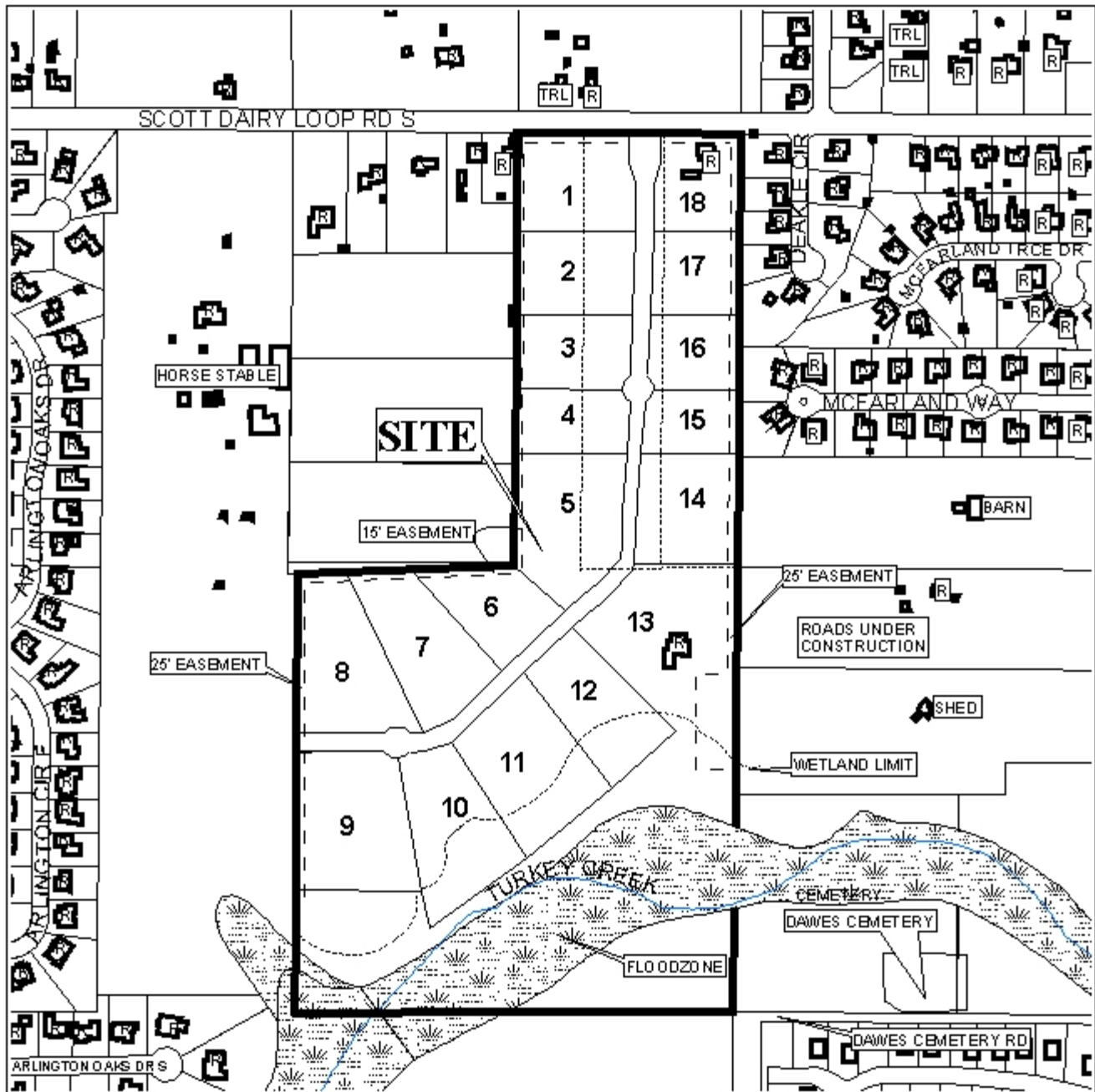


APPLICATION NUMBER Extension DATE July 21, 2005
APPLICANT Magnolia Downs Subdivision
REQUEST Subdivision



NTS

MAGNOLIA DOWNS SUBDIVISION



APPLICATION NUMBER Extension DATE July 21, 2005

LEGEND



NTS