

EXTENSION

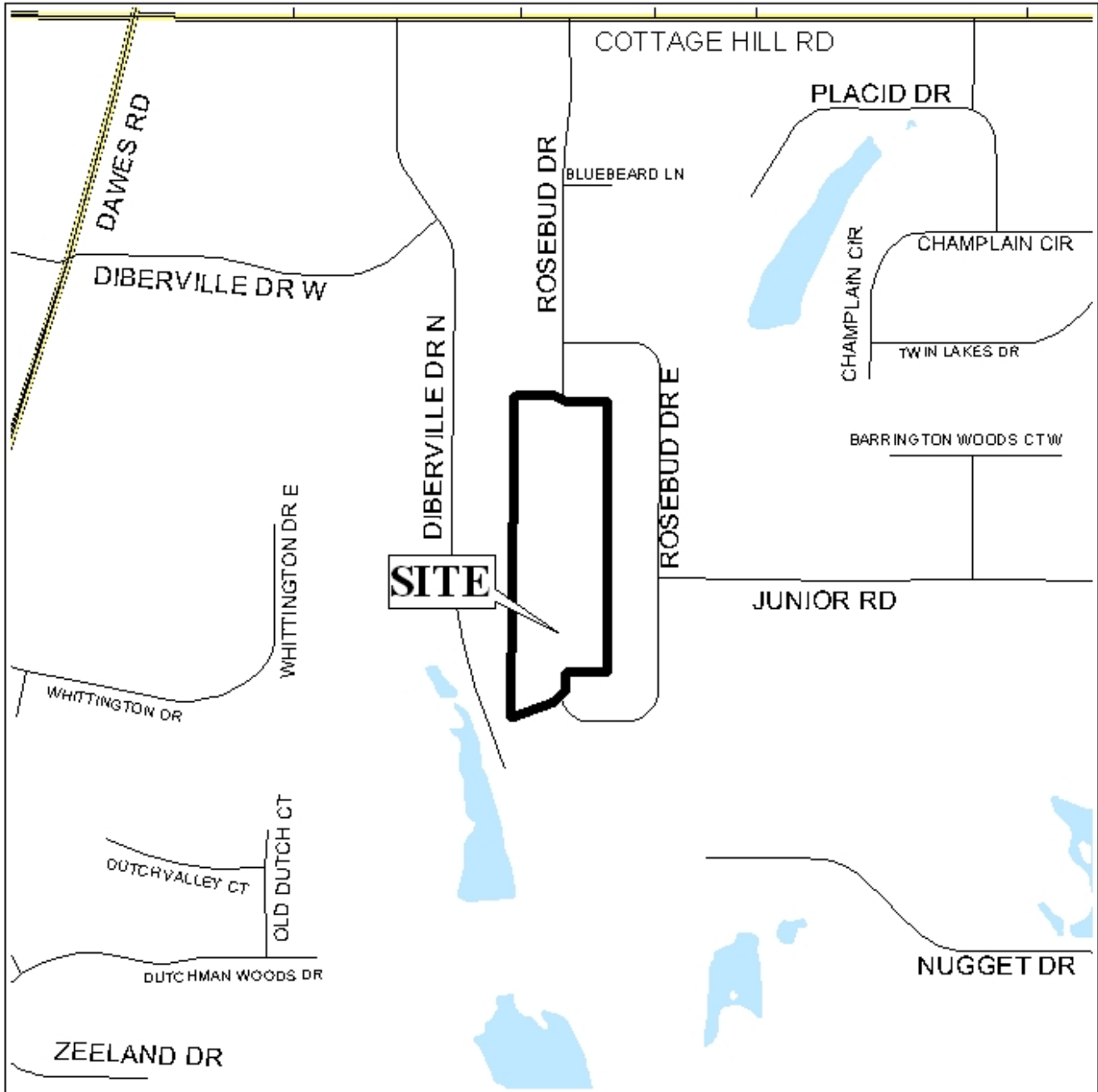
THE GARDENS OF COTTAGE HILL SUBDIVISION

This is a request for a one-year extension of a previously approved 123-lot subdivision. The subdivision is located on the South side of Cottage Hill Road, 400'± East of the North terminus of D'Iberville Drive North.

The subdivision was originally approved in 2002, two units have been recorded, and the site received an extension in 2005. There have not been changes in conditions in the surrounding area that would affect the subdivision as previously approved, nor have there been changes to the regulations that would affect the previous approval.

Based on the preceding, it is recommended that this request for extension be approved. However, the applicant should be advised that future extensions are unlikely to be approved.

LOCATOR MAP

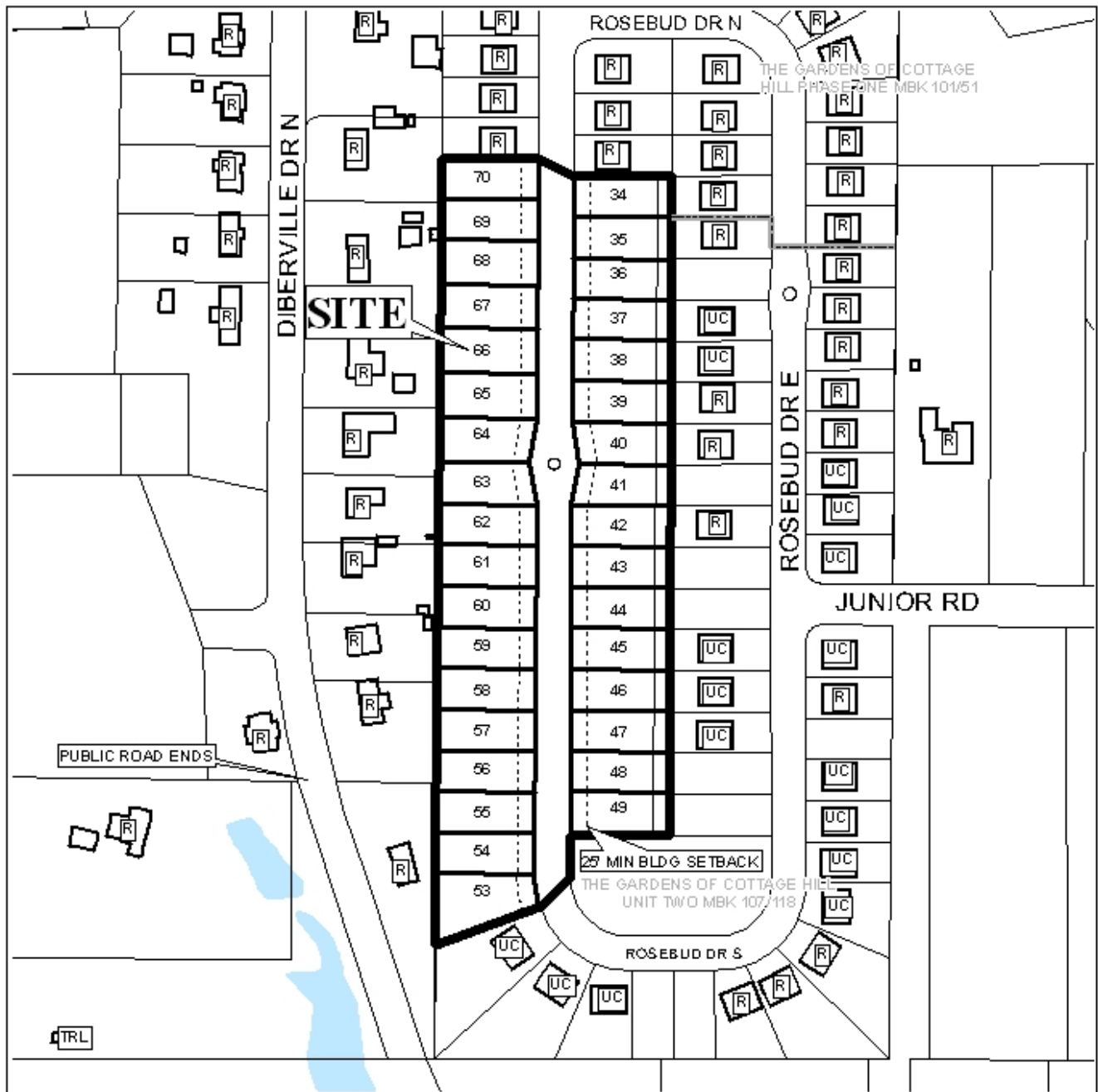


APPLICATION NUMBER Extension DATE May 4, 2006
APPLICANT The Gardens of Cottage Hill Subdivision
REQUEST Subdivision



NTS

THE GARDENS OF COTTAGE HILL SUBDIVISION



APPLICATION NUMBER Extension DATE May 4, 2006

LEGEND

R-1	R-2	R-3	R-A	R-B	H-B	B-1	LB-2	B-2	B-3	B-4	B-5	I-1	I-2



NTS