

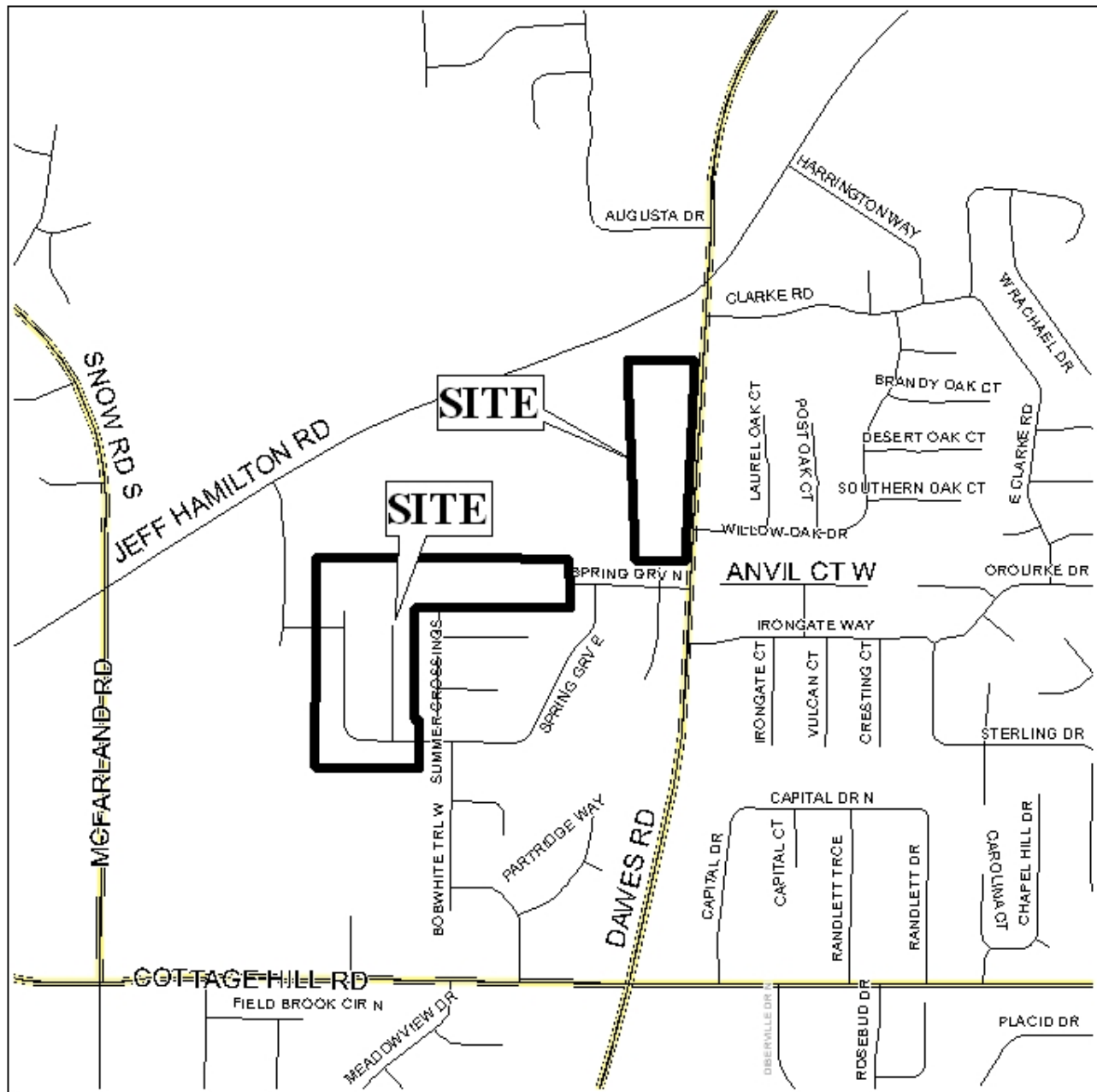
SPRING GROVE SUBDIVISION, UNIT TWO

This is a request for a one-year extension of a previously approved 173-lot subdivision. The subdivision is located at the West terminus of Spring Grove South, extending to the North terminus of Summer Crossings and the West terminus of Spring Grove North; and the West side of Dawes Road extending to the North terminus of Spring Grove Court.

There have been two extensions since the subdivision was originally approved in January, 2005, and one portion was recorded in March, 2007, which would effectively continue the case to March, 2008. Roads have since been constructed in an area adjacent to the recorded portion in preparation for an additional recording, and this extension would continue the case to January 2009, if approved. There have been no changes in the condition of the surrounding area(s), nor have there been any changes to the regulations, that would affect the previous approval.

Based on the preceding, it is recommended that this request for extension be approved.

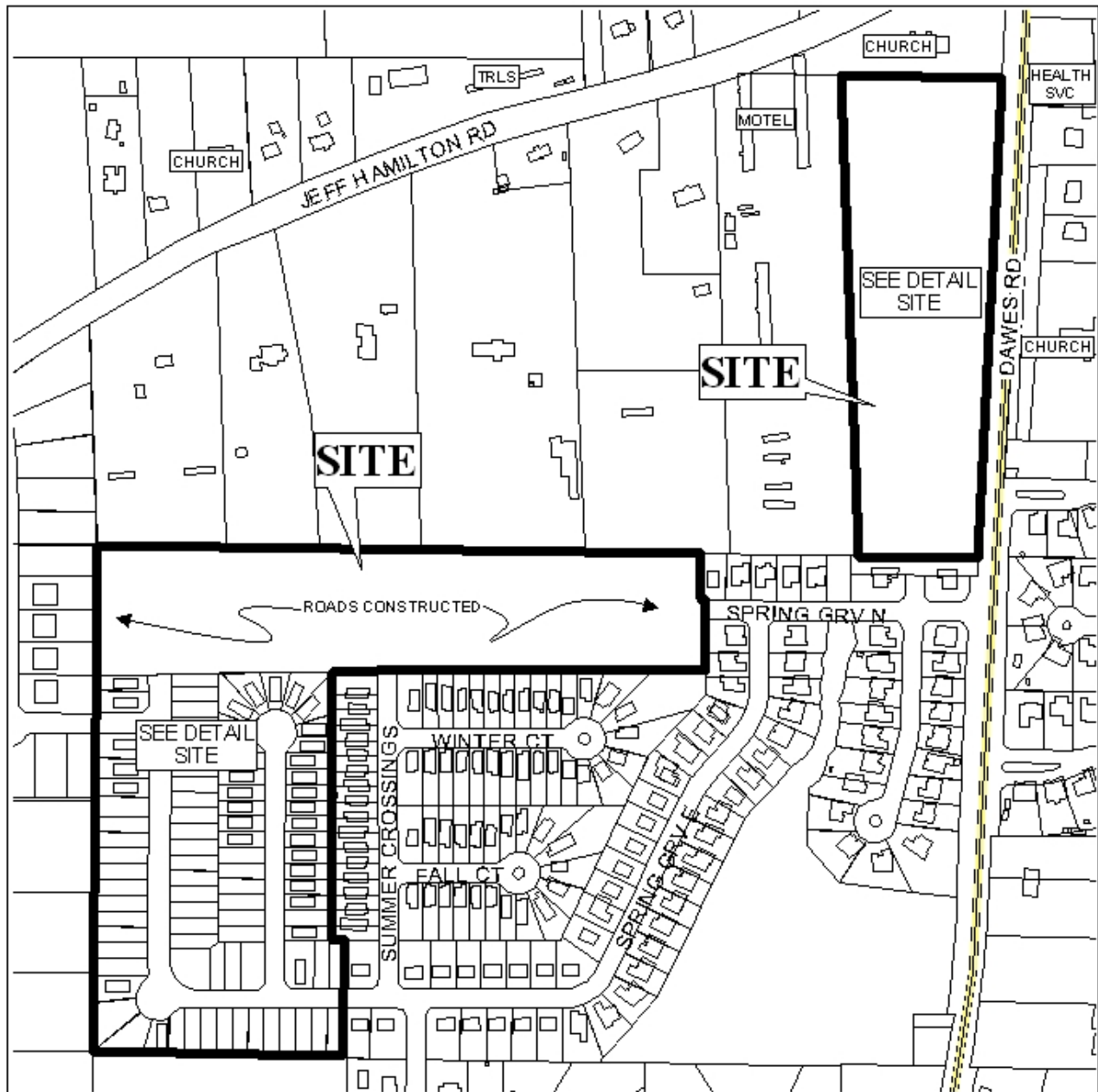
LOCATOR MAP



APPLICATION NUMBER 17 DATE January 3, 2008
APPLICANT Spring Grove Subdivision, Unit Two
REQUEST Subdivision

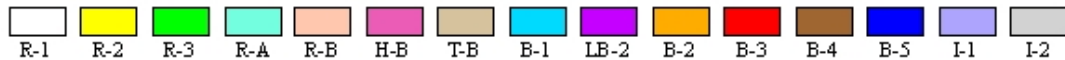


SPRING GROVE SUBDIVISION, UNIT TWO

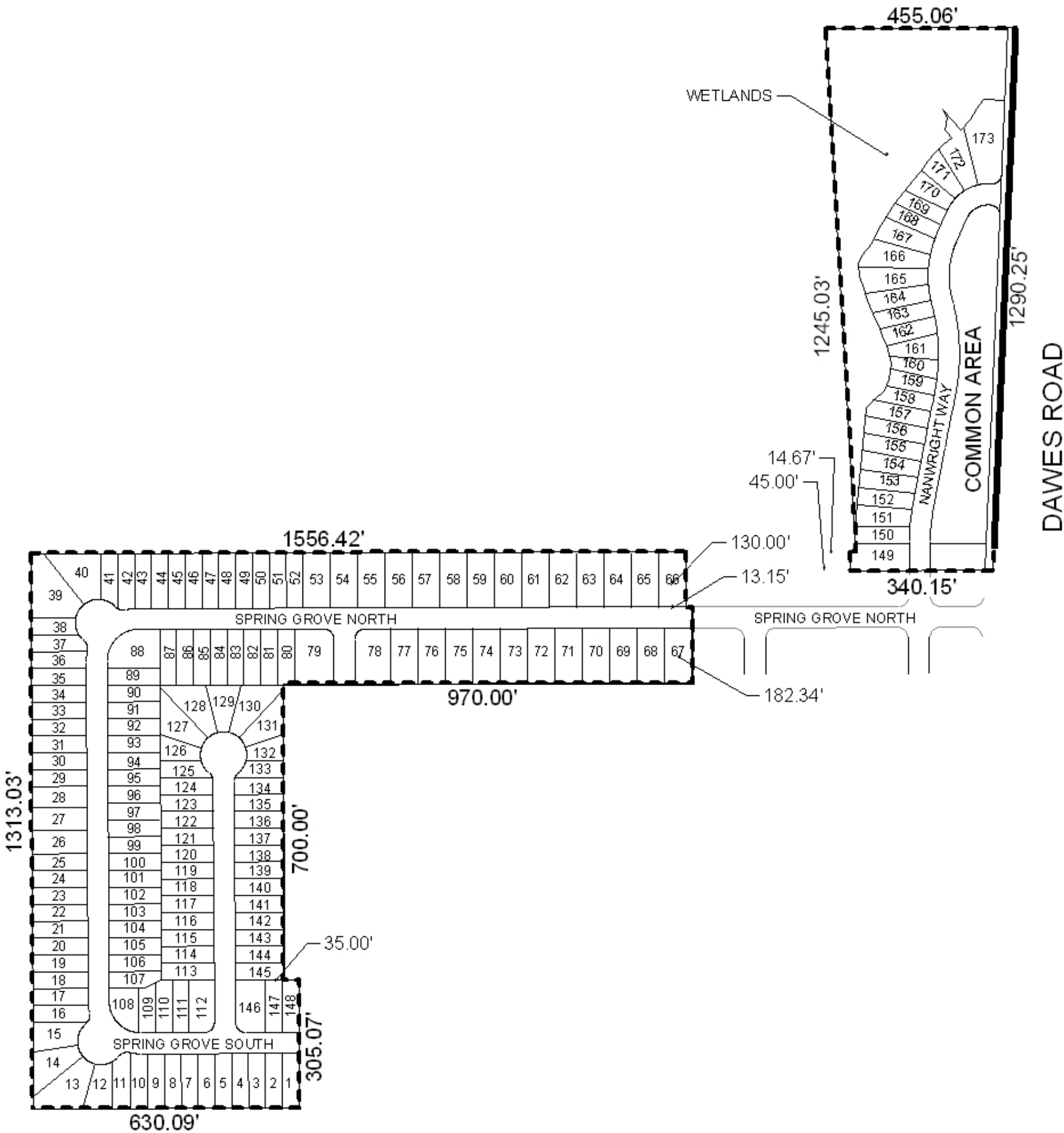


APPLICATION NUMBER 17 DATE January 3, 2008

LEGEND



DETAIL SITE PLAN



APPLICATION NUMBER 17 DATE January 3, 2008
APPLICANT Spring Grove Subdivision
REQUEST Subdivision

