

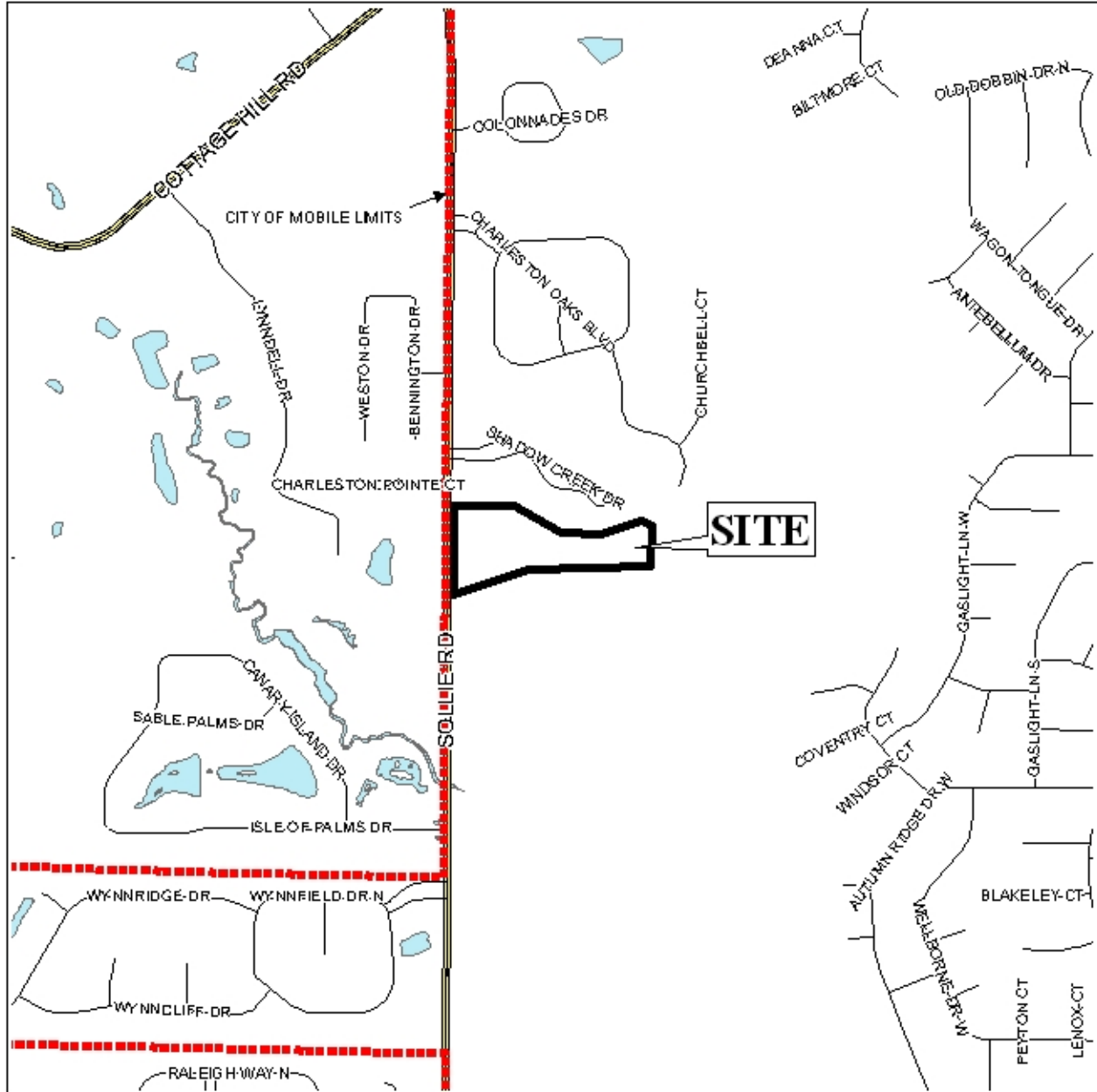
UNO SUBDIVISION, PHASE TWO

This is a request for a one-year extension of a previously approved 16-lot/10.3± acre subdivision. The subdivision is located on the East side of Sollie Road, 245'± South of Shadow Creek Drive.

This is the first request for an extension since the subdivision was originally approved in 2007. There have not been changes in conditions in the surrounding area that would affect the subdivision as previously approved.

Based on the preceding, it is recommended that this request for extension be approved.

LOCATOR MAP



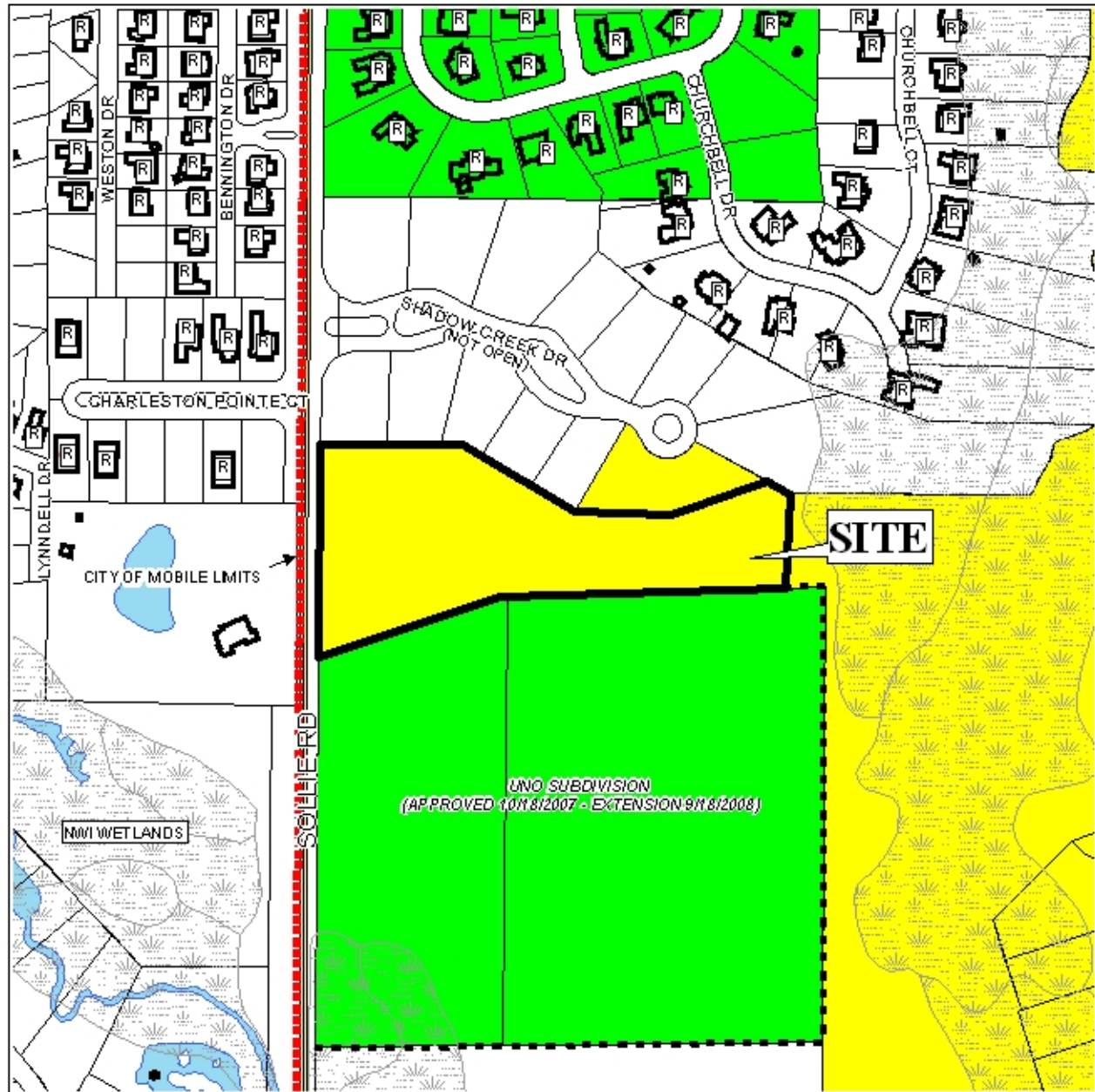
APPLICATION NUMBER 16 DATE October 16, 2008

APPLICANT UNO Subdivision, Phase Two

REQUEST Subdivision



UNO SUBDIVISION, PHASE TWO



APPLICATION NUMBER 16 DATE October 16, 2008

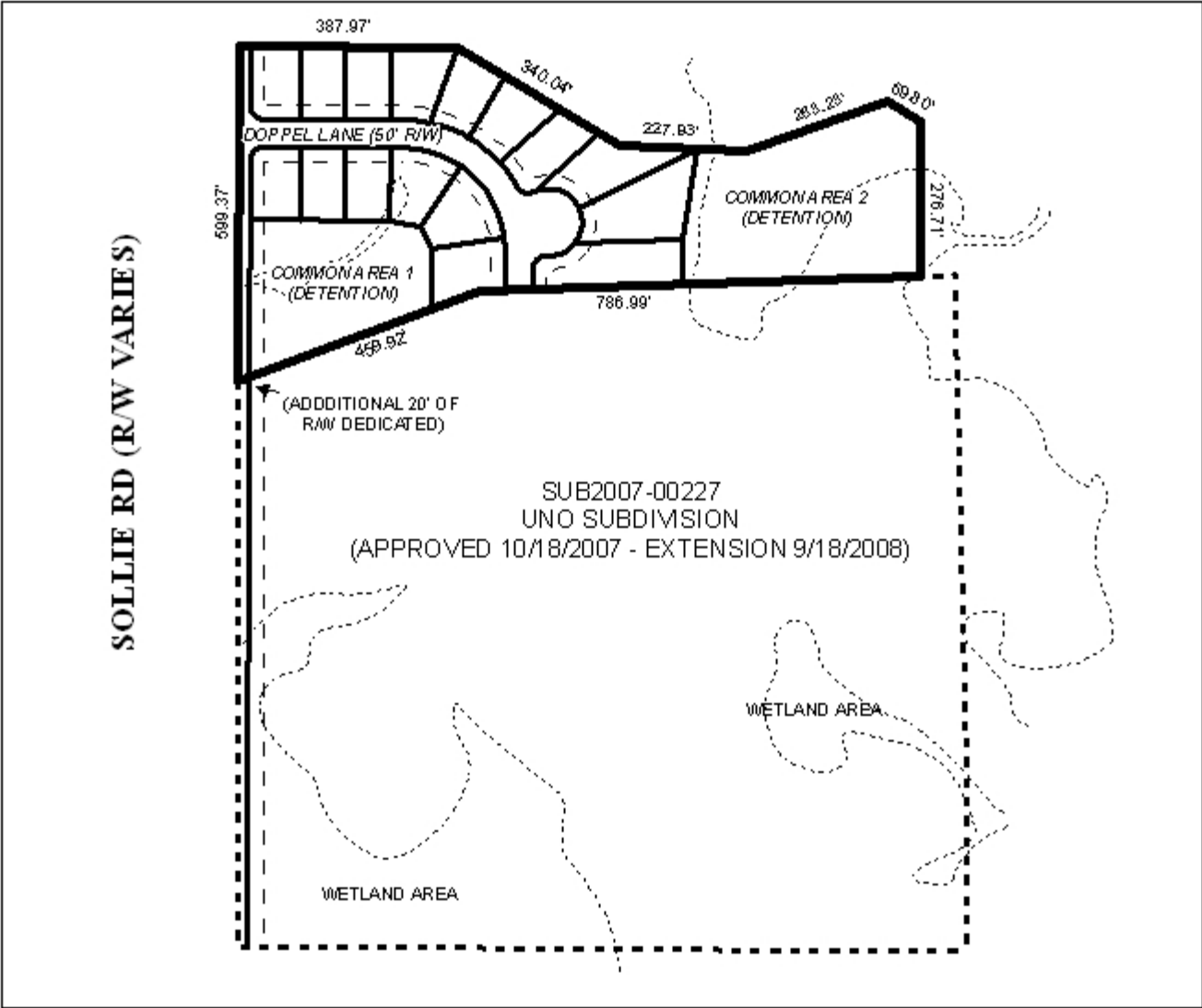
LEGEND

| | | | | | | | | | | | | | | |
|-----|-----|-----|-----|-----|-----|-----|-----|------|-----|-----|-----|-----|-----|-----|
| R-1 | R-2 | R-3 | R-A | R-B | H-B | T-B | B-1 | LB-2 | B-2 | B-3 | B-4 | B-5 | I-1 | I-2 |
|-----|-----|-----|-----|-----|-----|-----|-----|------|-----|-----|-----|-----|-----|-----|



NTS

SITE PLAN



This site illustrates the proposed subdivision and its configuration.

APPLICATION NUMBER 16 DATE October 16, 2008

APPLICANT UNO Subdivision, Phase Two

REQUEST _____ Subdivision _____



NTS

UNO SUBDIVISION, PHASE TWO



APPLICATION NUMBER 16 DATE October 16, 2008



NTS