

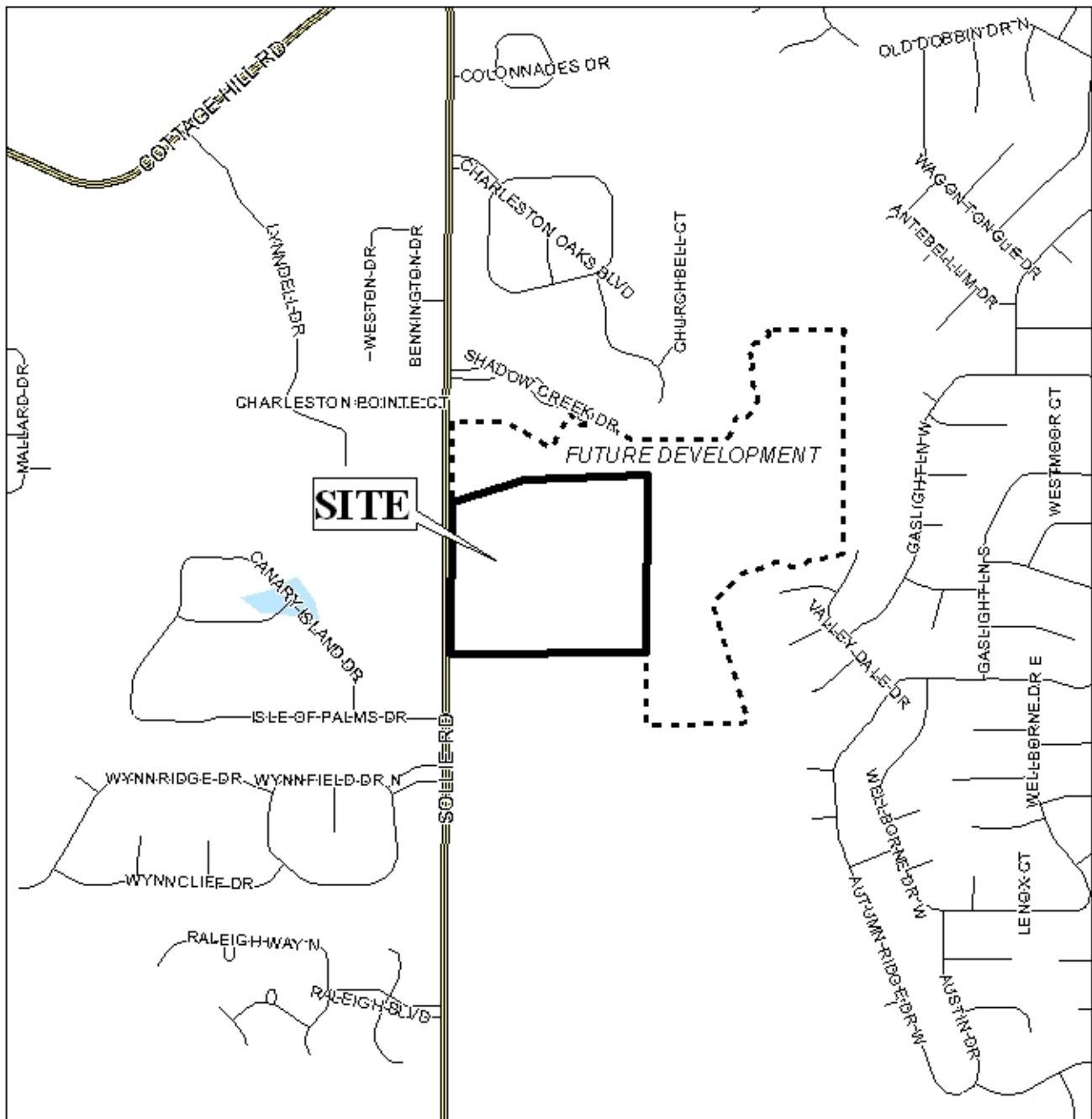
UNO SUBDIVISION

This is a request for a one-year extension of a previously approved 1-lot/34.4± acre subdivision. The subdivision is located on the East side of Sollie Road, 800'+ South of Shadow Creek Drive.

This is the first request for an extension since the subdivision was originally approved in 2007. There have not been changes in conditions in the surrounding area that would affect the subdivision as previously approved.

Based on the preceding, it is recommended that this request for extension be approved.

LOCATOR MAP

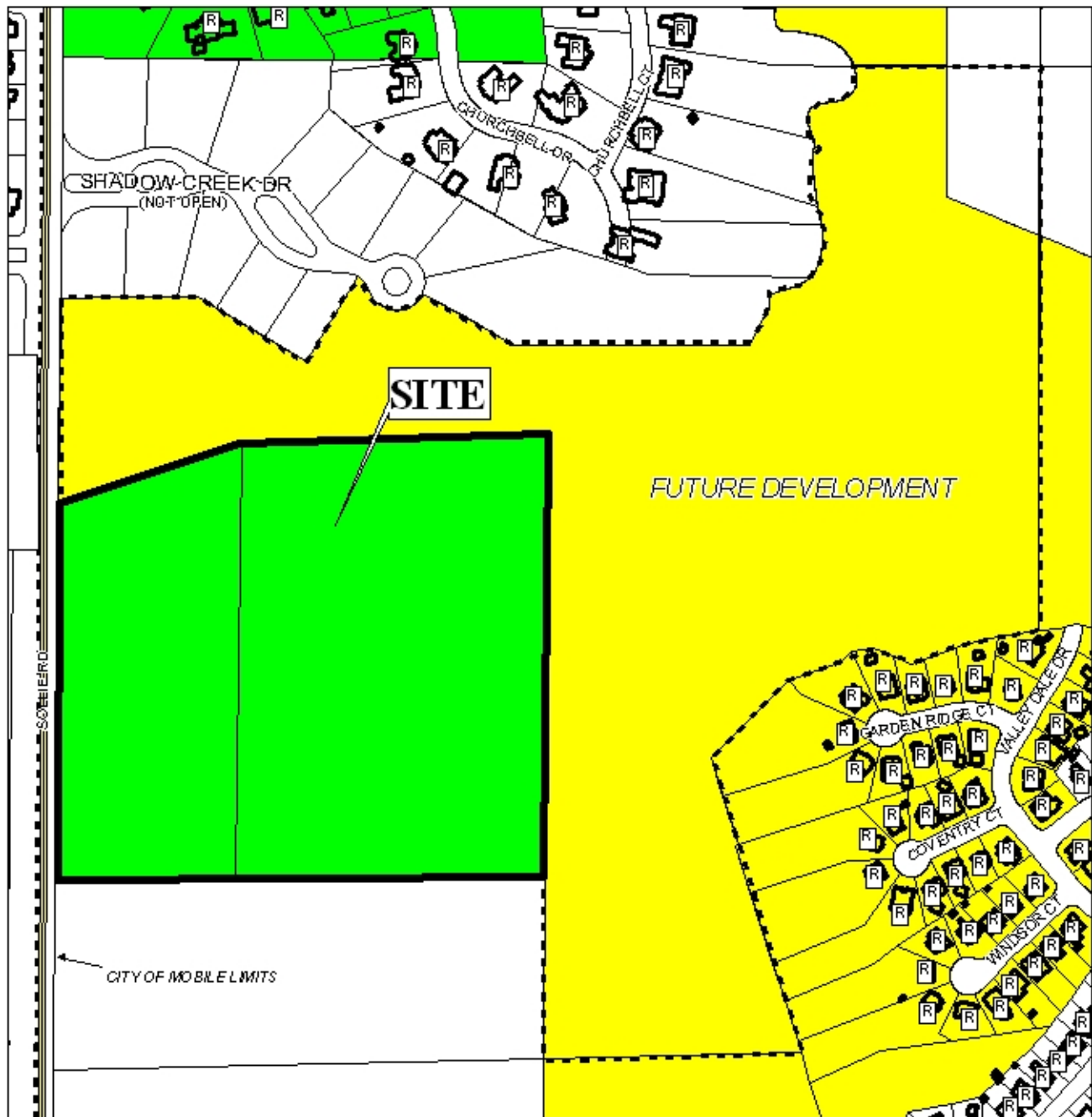


APPLICATION NUMBER 12 DATE September 18, 2008

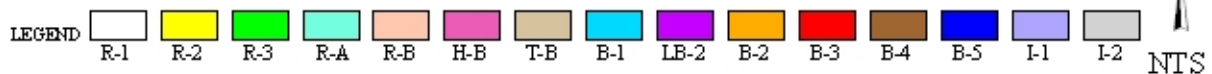
APPLICANT Uno Subdivision

REQUEST Subdivision

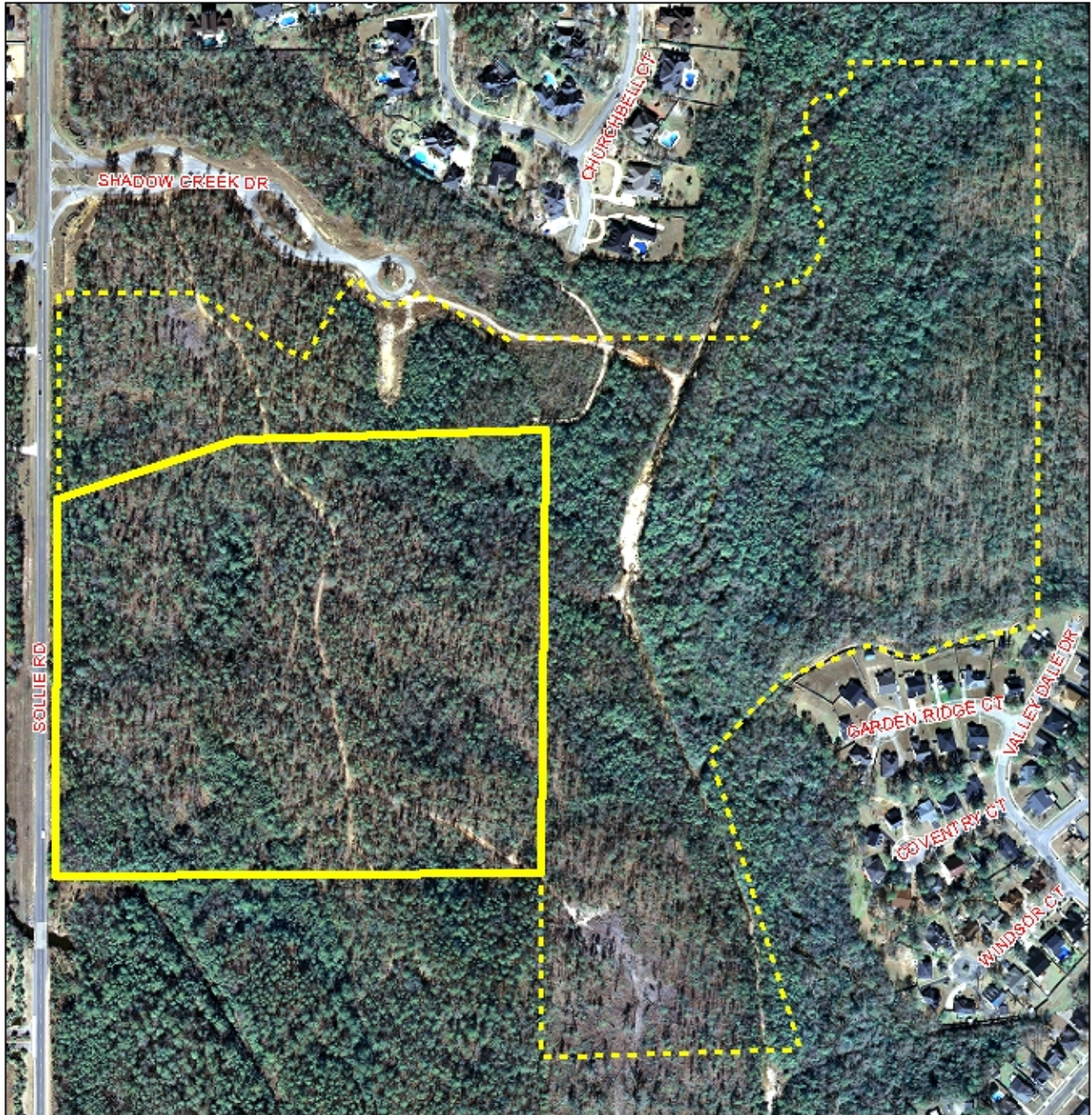




APPLICATION NUMBER 12 DATE September 18, 2008



UNO SUBDIVISION



APPLICATION NUMBER 12 DATE September 18, 2008

