

**HUNTER'S COVE SUBDIVISION,**  
**UNIT ONE, PHASE TWO**

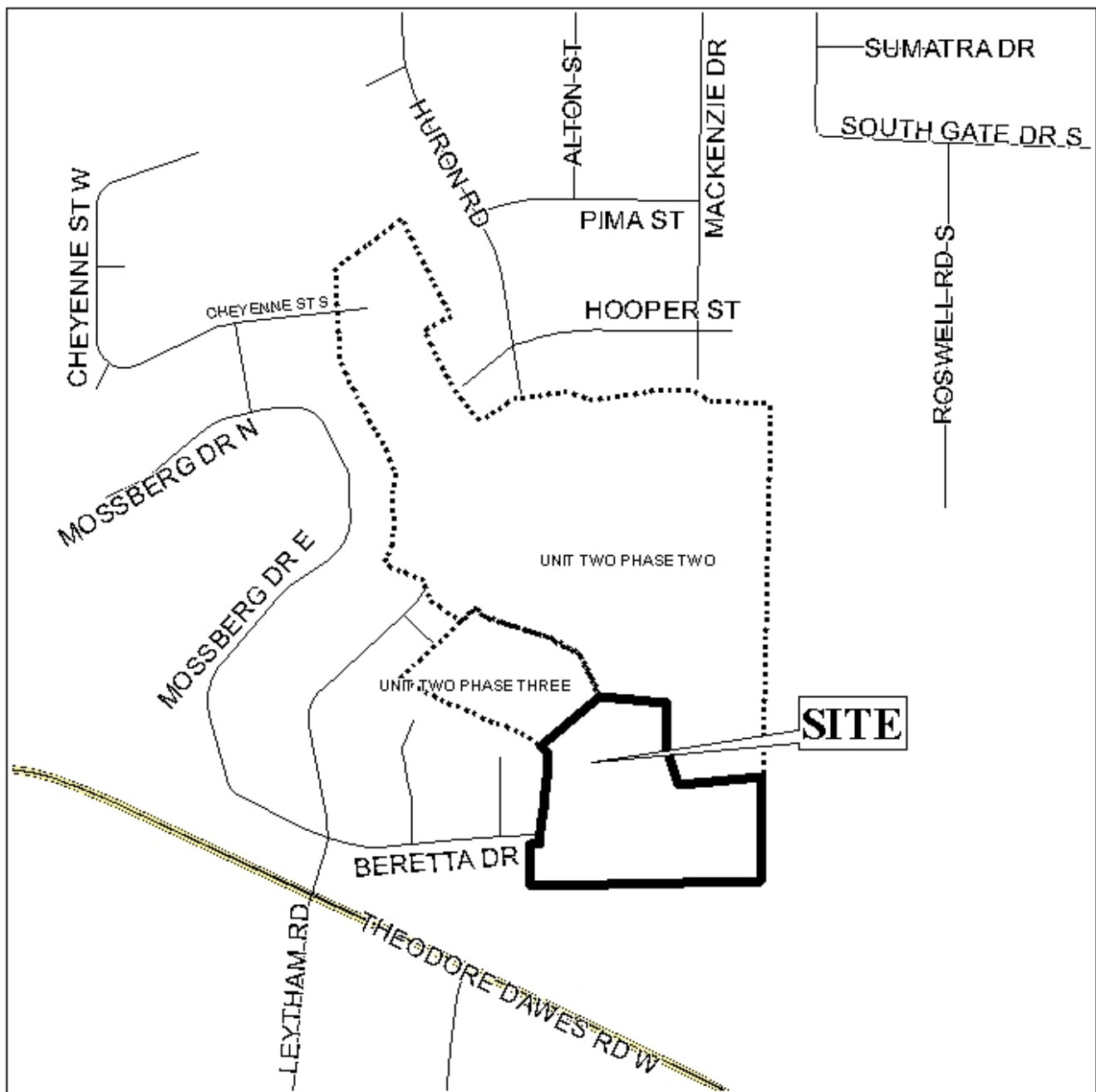
This is a request for a one-year extension of a previously approved 35-lot subdivision. The subdivision is located at the East terminus of Beretta Drive.

There have been no extensions since the subdivision was originally approved on June 15, 2006, and no units have been recorded. There have been no changes in conditions in the surrounding area that would affect the subdivision as previously approved.

There have been no changes to the regulations that would affect the previous approval.

Based on the preceding, and the fact that road construction is required, it is recommended that this request for extension be approved.

# LOCATOR MAP



APPLICATION NUMBER 11 DATE May 17, 2007

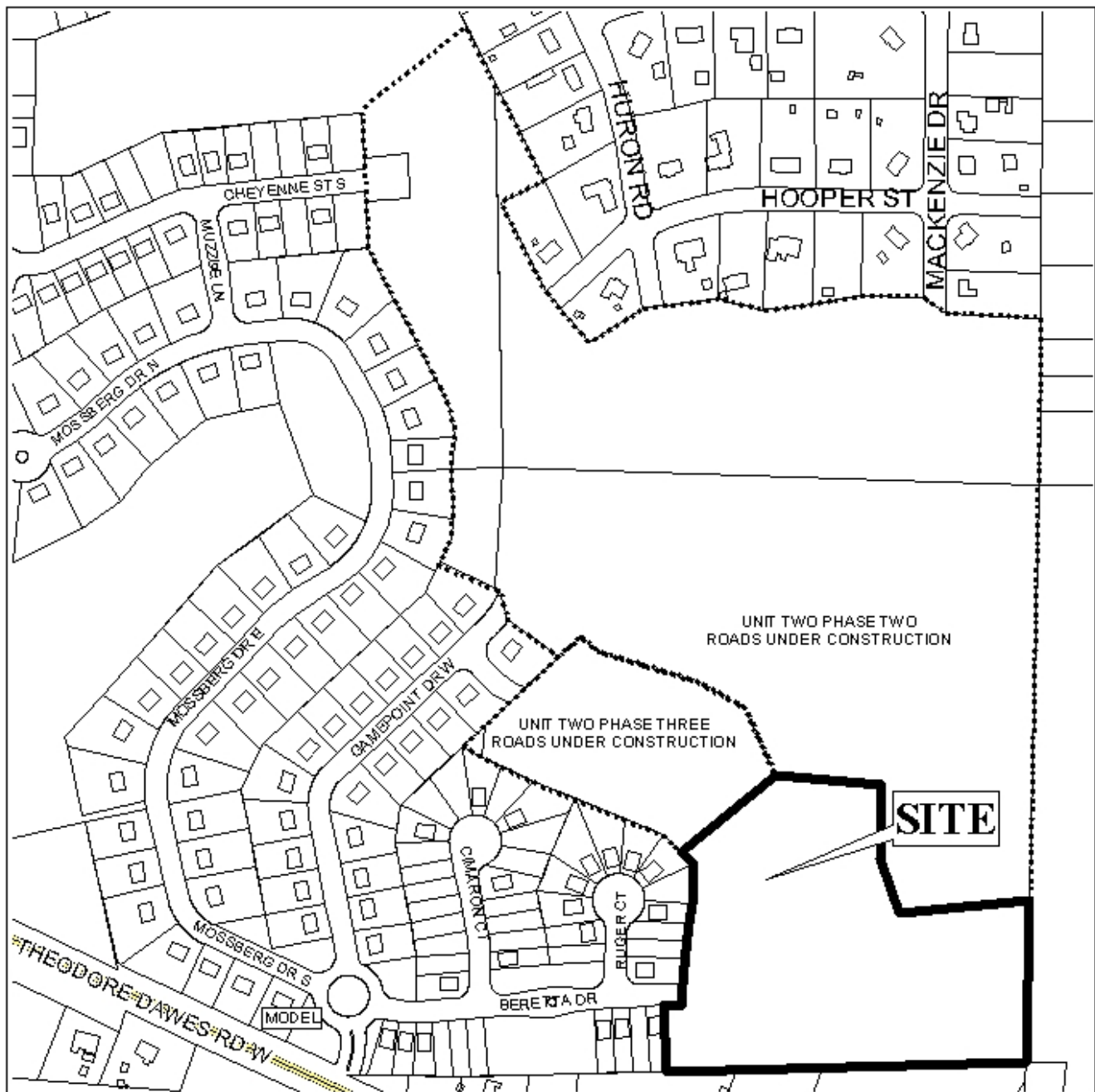
APPLICANT Hunter's Cove Subdivision, Unit One, Phase Two

REQUEST Subdivision



NTS

# HUNTER'S COVE SUBDIVISION, UNIT ONE, PHASE TWO



APPLICATION NUMBER 11 DATE May 17, 2007

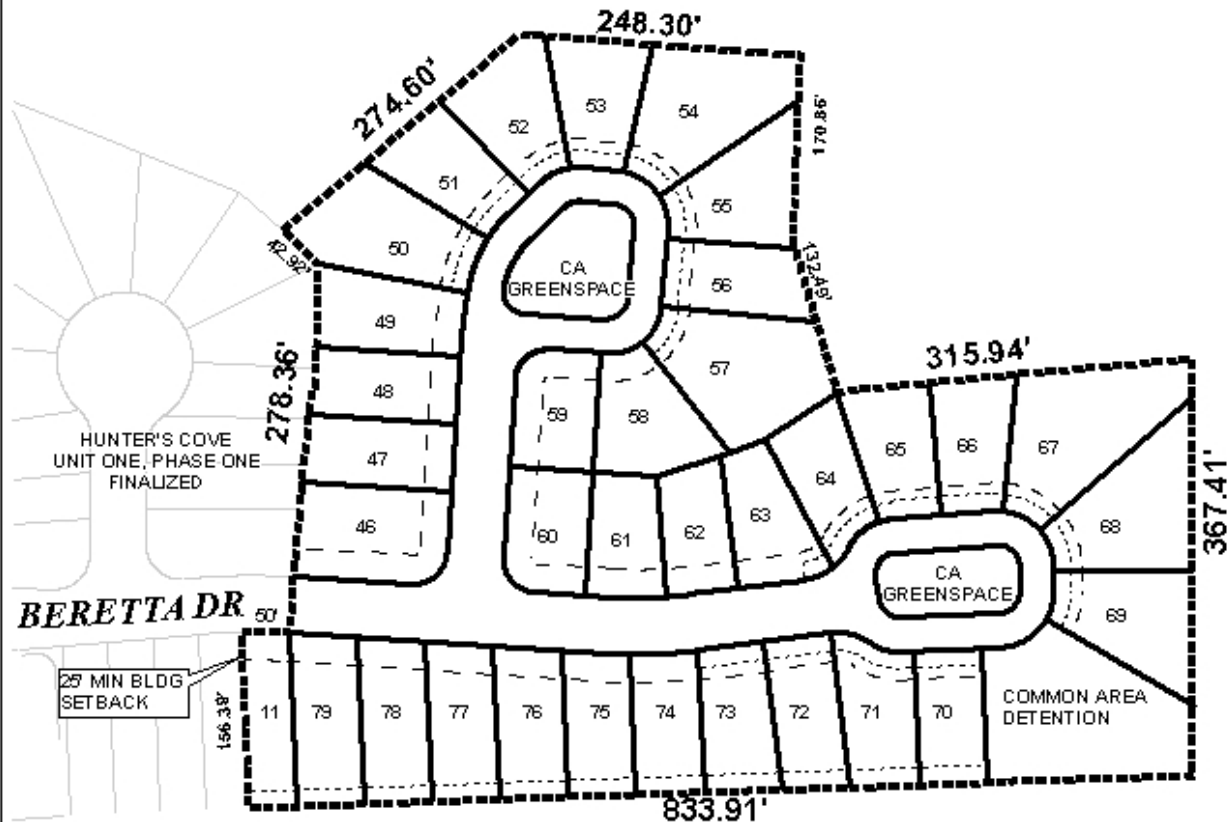
LEGEND

R-1	R-2	R-3	R-A	R-B	H-B	B-1	LB-2	B-2	B-3	B-4	B-5	I-1	I-2



NTS

# SUBDIVISION PLAT



APPLICATION NUMBER 11 DATE May 17, 2007  
APPLICANT Hunter's Cove Subdivision, Unit One, Phase Two  
REQUEST Subdivision



NTS