

STONE HEDGE SUBDIVISION, UNIT FIVE

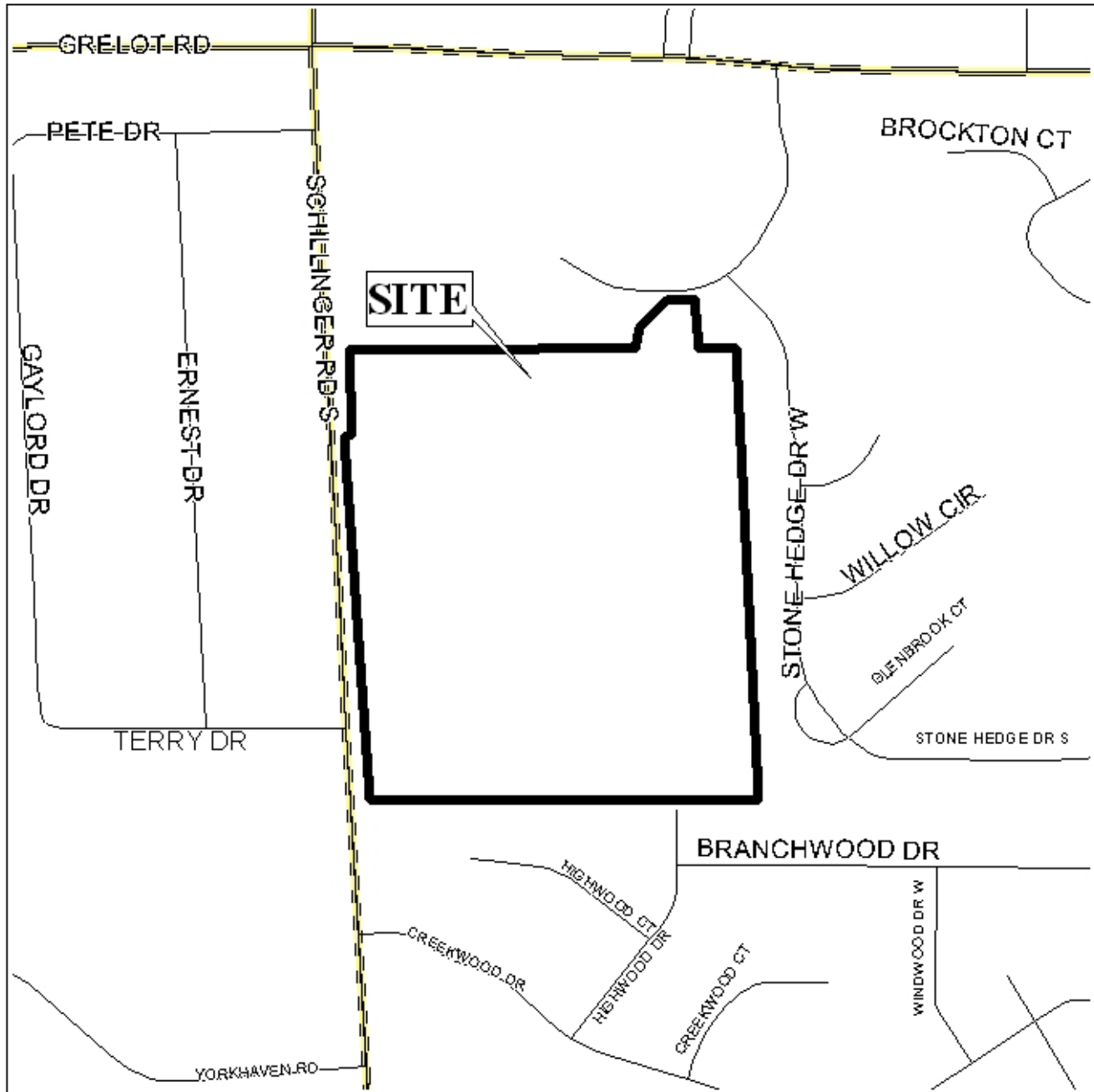
This is a request for a one-year extension of a previously approved 38 lot subdivision. The subdivision is located on the south side of Berwick Court, 110 feet \pm west of Stone Hedge Drive, extending to the north terminus of Highwood Drive.

There have been no extensions since the subdivision was originally approved on September 21, 2006, and no units have been recorded. There have been no changes in the condition of the surrounding area(s) that would affect the subdivision as previously approved.

There have been no changes to the regulations that would affect the previous approval.

Based on the preceding, it is recommended that this request for extension be approved.

LOCATOR MAP



APPLICATION NUMBER 10 DATE October 4, 2007

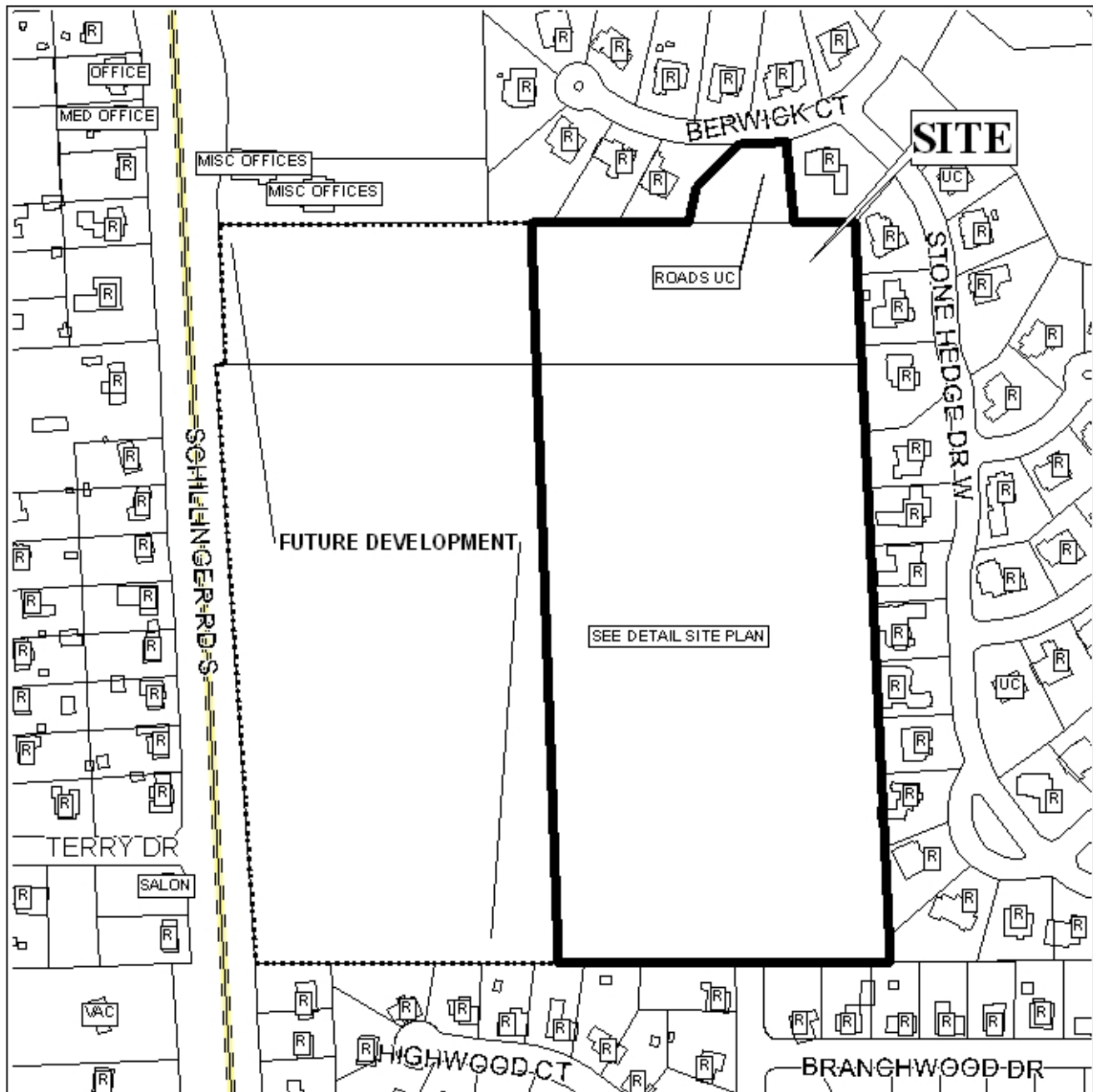
APPLICANT Stone Hedge Subdivision, Unit Five

REQUEST Subdivision



NTS

STONE HEDGE SUBDIVISION, UNIT FIVE



APPLICATION NUMBER 10 DATE October 4, 2007

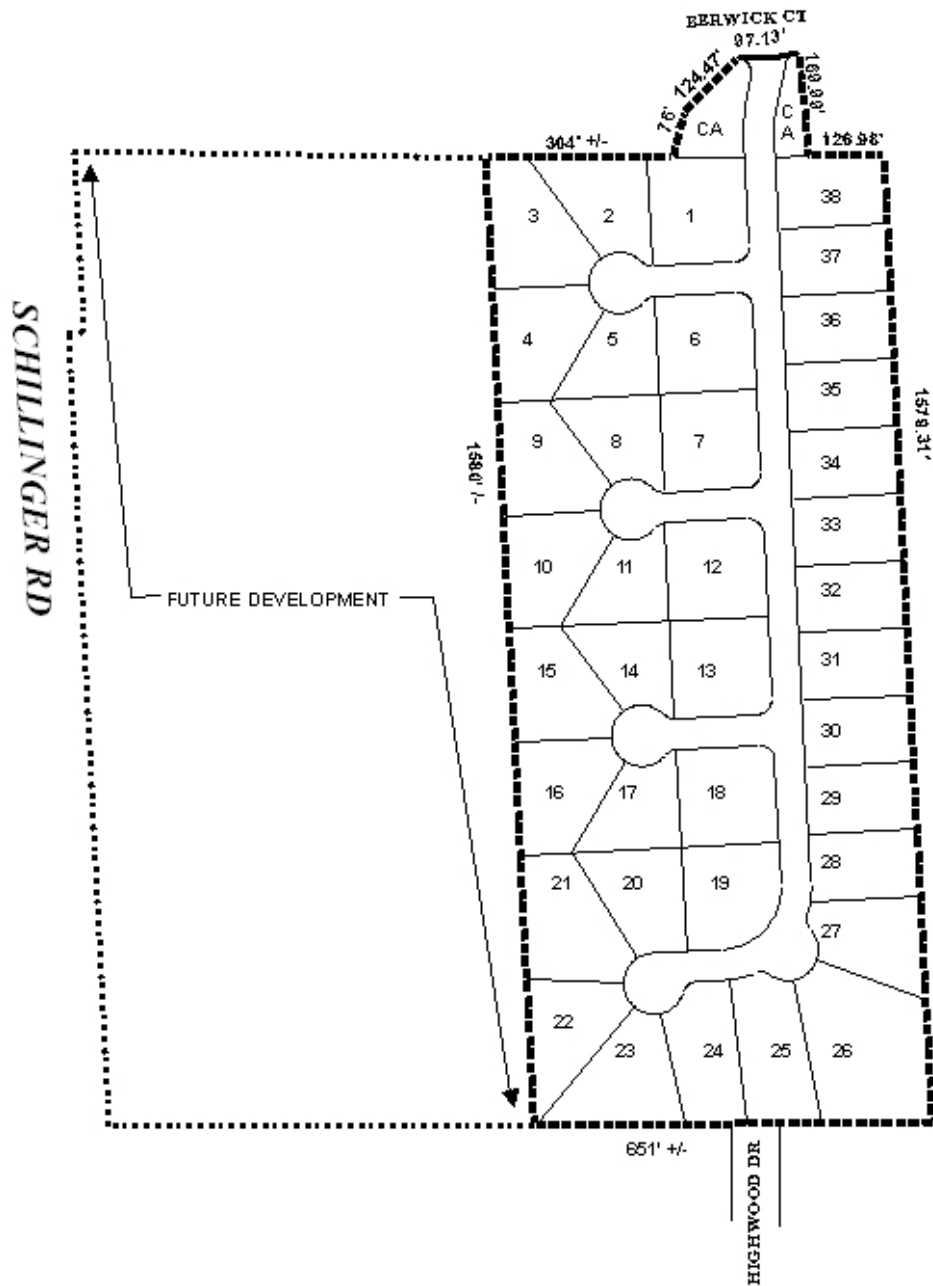
LEGEND

| | | | | | | | | | | | | | | |
|-----|-----|-----|-----|-----|-----|-----|-----|------|-----|-----|-----|-----|-----|-----|
| R-1 | R-2 | R-3 | R-A | R-B | H-B | T-B | B-1 | LB-2 | B-2 | B-3 | B-4 | B-5 | I-1 | I-2 |
|-----|-----|-----|-----|-----|-----|-----|-----|------|-----|-----|-----|-----|-----|-----|



NTS

DETAIL SITE PLAN



APPLICATION NUMBER 10 DATE October 4, 2007
APPLICANT Stone Hedge Subdivision, Unit Five
REQUEST Subdivision



NTS