

OYLER COURT SUBDIVISION

This is a request for a one-year extension of a previously approved 29-lot subdivision. The subdivision is located on the East side of Oyler Road, 1000'± South of Jeff Hamilton Road.

There have been no extensions since the subdivision was originally approved on July 5, 2007, and no units have been recorded; however, road construction is underway. There have been no changes in the condition of the surrounding area(s) that would affect the subdivision as previously approved, nor have there been any changes to the regulations that would affect the previous approval.

Based on the preceding, it is recommended that this request for extension be approved.

LOCATOR MAP



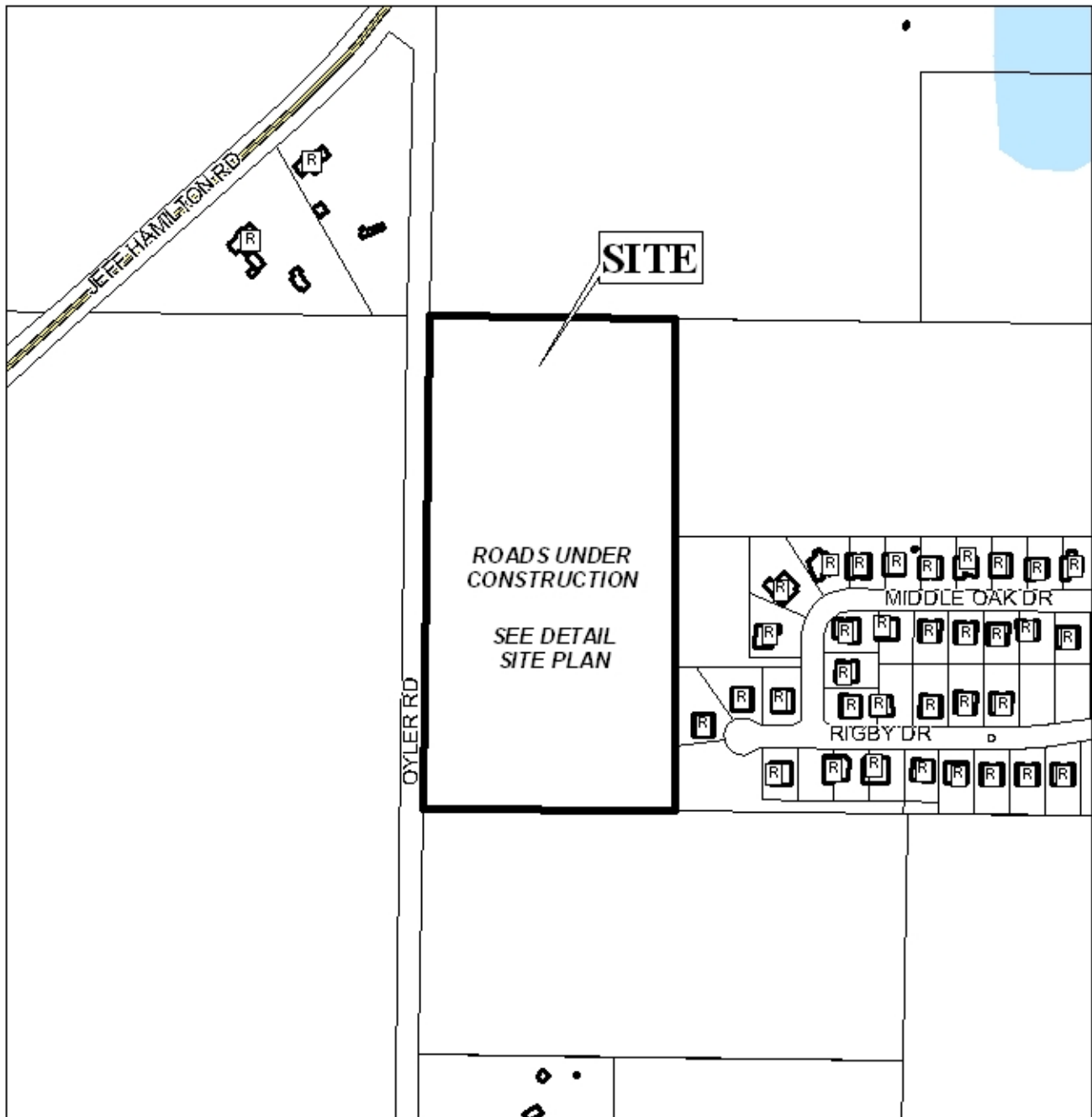
APPLICATION NUMBER 8 DATE August 7, 2008

APPLICANT Oyler Court Subdivision

REQUEST Subdivision



OLYER COURT SUBDIVISION



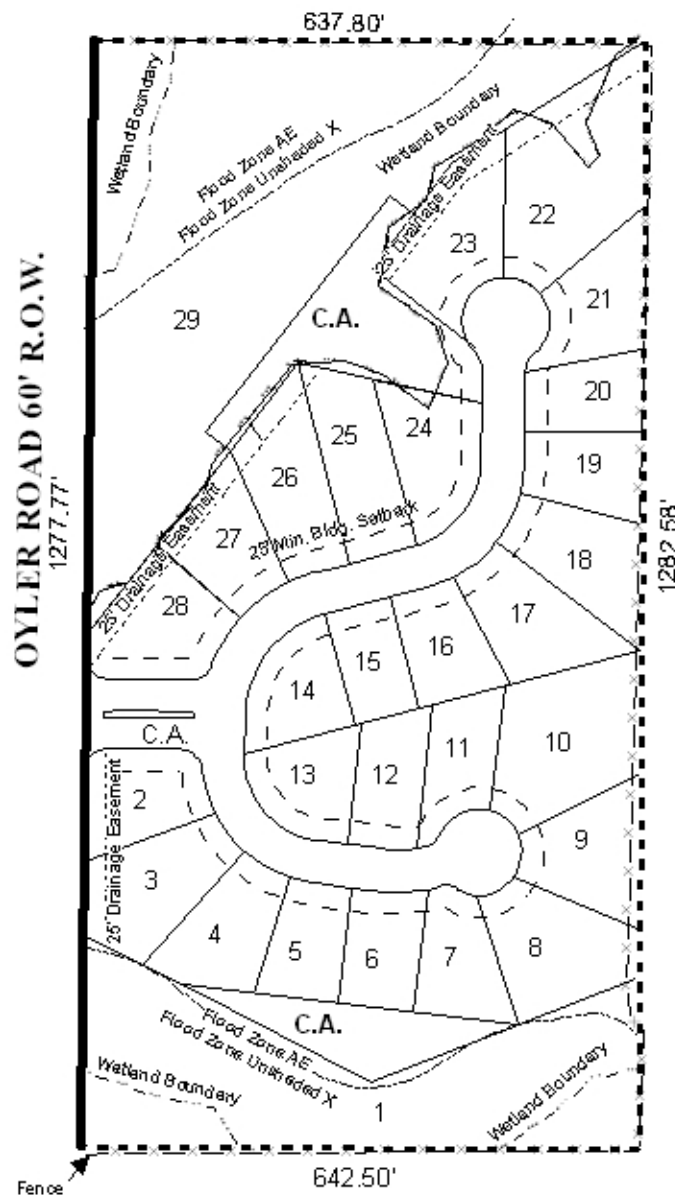
APPLICATION NUMBER 8 DATE August 7, 2008

LEGEND

															NTS
R-1	R-2	R-3	R-A	R-B	H-B	T-B	B-1	LB-2	B-2	B-3	B-4	B-5	I-1	I-2	



DETAIL SITE PLAN



APPLICATION NUMBER 8 DATE August 7, 2008
APPLICANT Oyler Court Subdivision
REQUEST Subdivision



OLYER COURT SUBDIVISION



APPLICATION NUMBER 8 DATE August 7, 2008

