

**SPRINGHILL ESTATES SUBDIVISION, UNIT
NUMBER ONE, RESUBDIVISION OF A PORTION
OF LOTS 14 & 15**

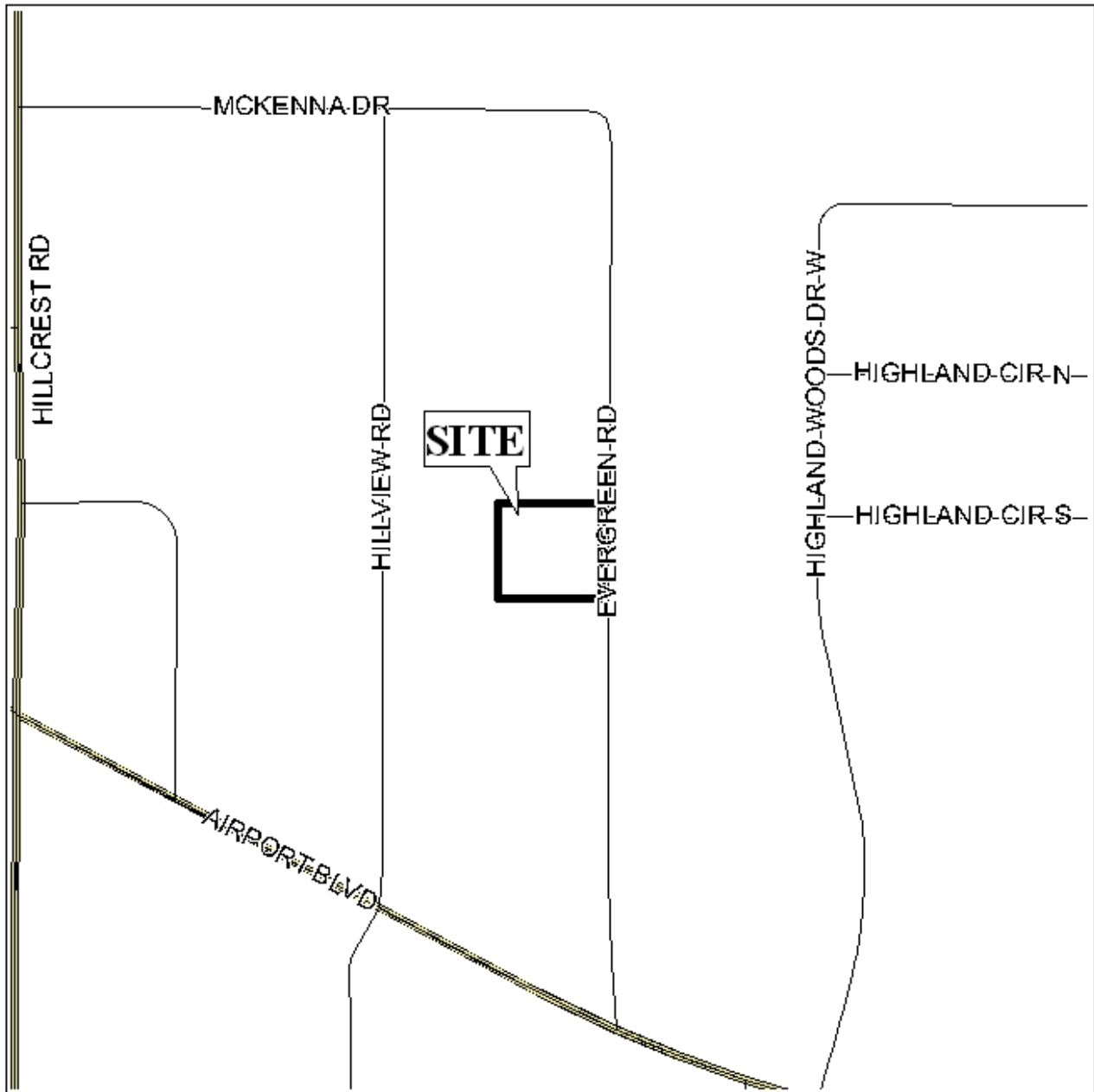
This is a request for a one-year extension of a previously approved three-lot subdivision. The subdivision is located on the West side of Evergreen Road, 715'± North of Airport Boulevard.

This is the third extension request since the subdivision was originally approved on September 6, 2006. There have been no changes in conditions in the surrounding area that would affect the subdivision as previously approved; nor changes to the regulations that would affect the previous approval.

It should be noted that no road construction is required for the recording of the subdivision, and that the applicant was informed in 2008 that future extensions would be unlikely.

Based on the preceding, it is recommended that this request for extension be denied.

LOCATOR MAP



APPLICATION NUMBER 8 DATE September 17, 2009

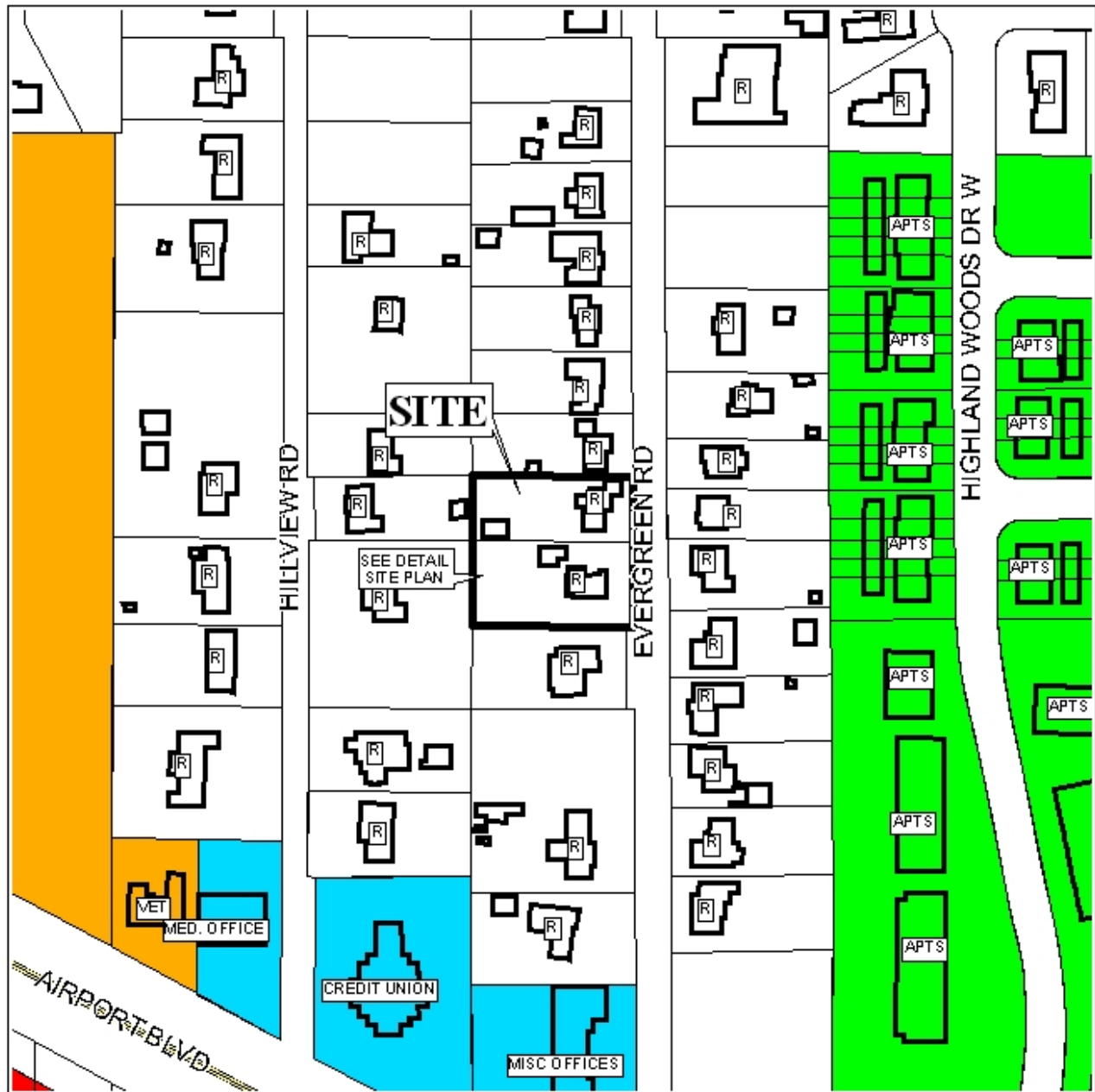
APPLICANT Springhill Estates Subdivision, Unit One, Resubdivision of a Portion of Lots 14 & 15

REQUEST Subdivision

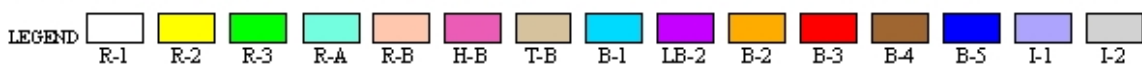


NTS

**SPRINGHILL ESTATES SUBDIVISION, UNIT NUMBER ONE,
RESUBDIVISION OF A PORTION OF LOTS 14 & 15**



APPLICATION NUMBER 8 DATE September 17, 2009



NTS

SPRINGHILL ESTATES SUBDIVISION, UNIT NUMBER ONE,
RESUBDIVISION OF A PORTION OF LOTS 14 & 15

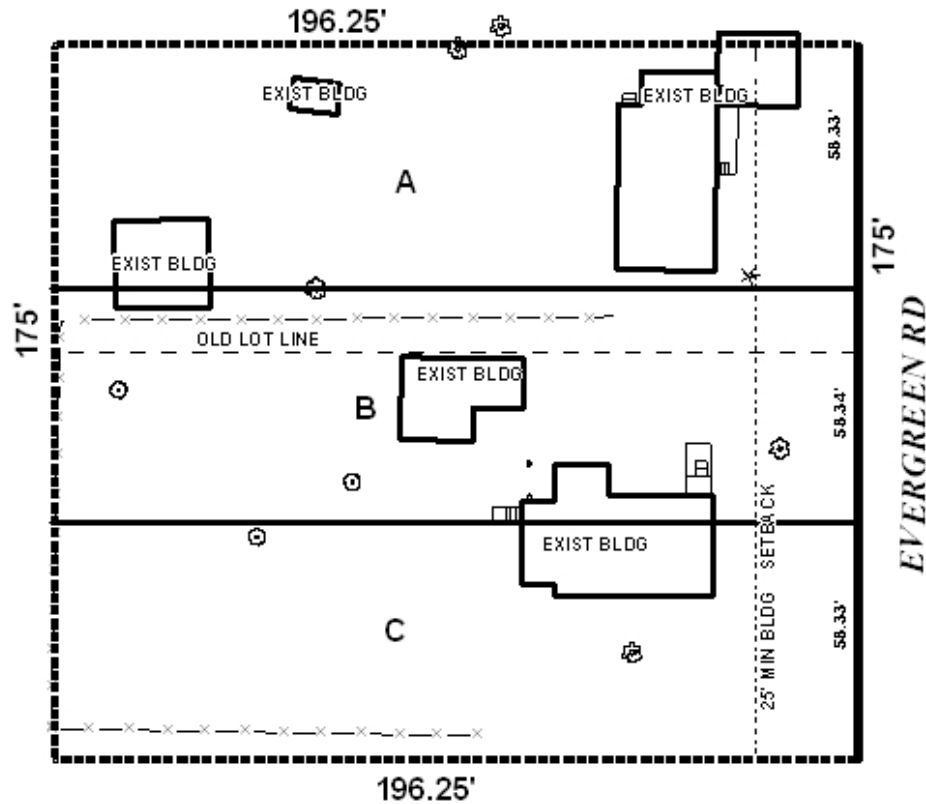


APPLICATION NUMBER 8 DATE September 17, 2009



NTS

DETAIL SITE PLAN



APPLICATION NUMBER 8 DATE September 17, 2009

APPLICANT Springhill Estates Subdivision, Unit One, Resubdivision of a Portion of Lots 14 & 15

REQUEST Subdivision



NTS