

AMELIA LAKE SUBDIVISION, **PHASES 1-2**

Engineering Comments: Must comply with the Mobile County Flood Damage Prevention Ordinance. Development shall be designed to comply with the storm water detention and drainage facility requirements of the City of Mobile storm water and flood control ordinances, and requiring submission of certification from a licensed engineer certifying that the design complies with the storm water detention and drainage facility requirements of the City of Mobile storm water and flood control ordinances prior to the issuance of any permits.

Fire-Rescue Department Comments: All projects within the City of Mobile Fire Jurisdiction must comply with the requirements of the 2009 International Fire Code, as adopted by the City of Mobile.

MAWSS Comments: MAWSS has **No** water or sewer services available.

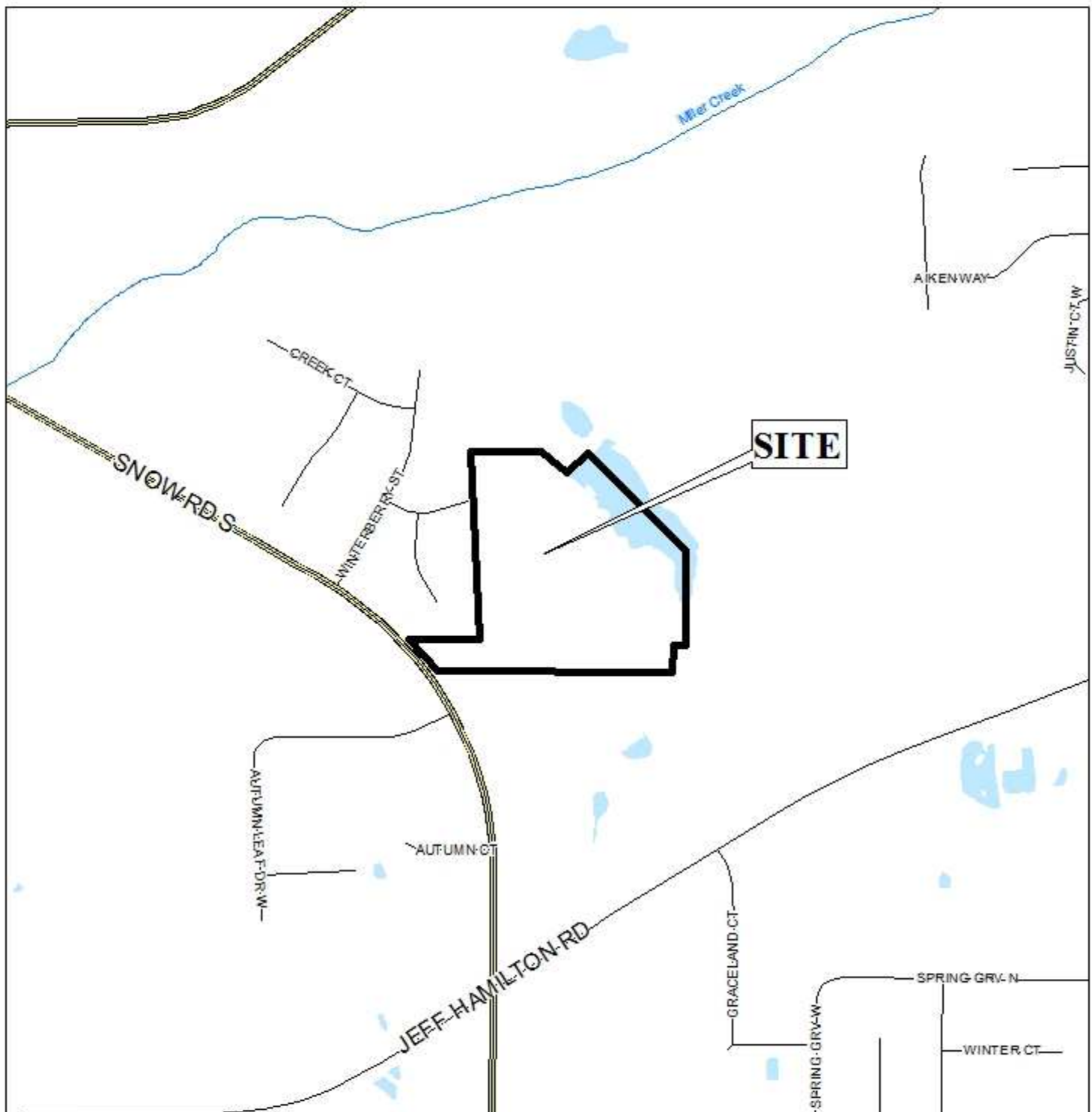
The preliminary plat illustrates the proposed 47-lot, 21.0 ± acre subdivision which is located on the East side of Snow Road, 3/10± mile North of Jeff Hamilton Road. The site is within the Planning Jurisdiction and the applicant states that the subdivision is served by water and sewer.

The purpose of this application is to create 47 legal lots of record from one metes-and-bounds parcel and a portion of a large, 115± acre metes-and-bounds parcel, with the remaining area labeled as future development. It should be noted that the large “future development” area contains a house, and thus cannot be reserved for future development. Instead, it must be a separate lot.

Recommended that this application be heldover to the meeting of September 18th, with revisions due by August 29th, to address the following:

- 1) Inclusion of the area labeled “future development” as an additional lot within this request, to include lot and notification fees and labels.

LOCATOR MAP



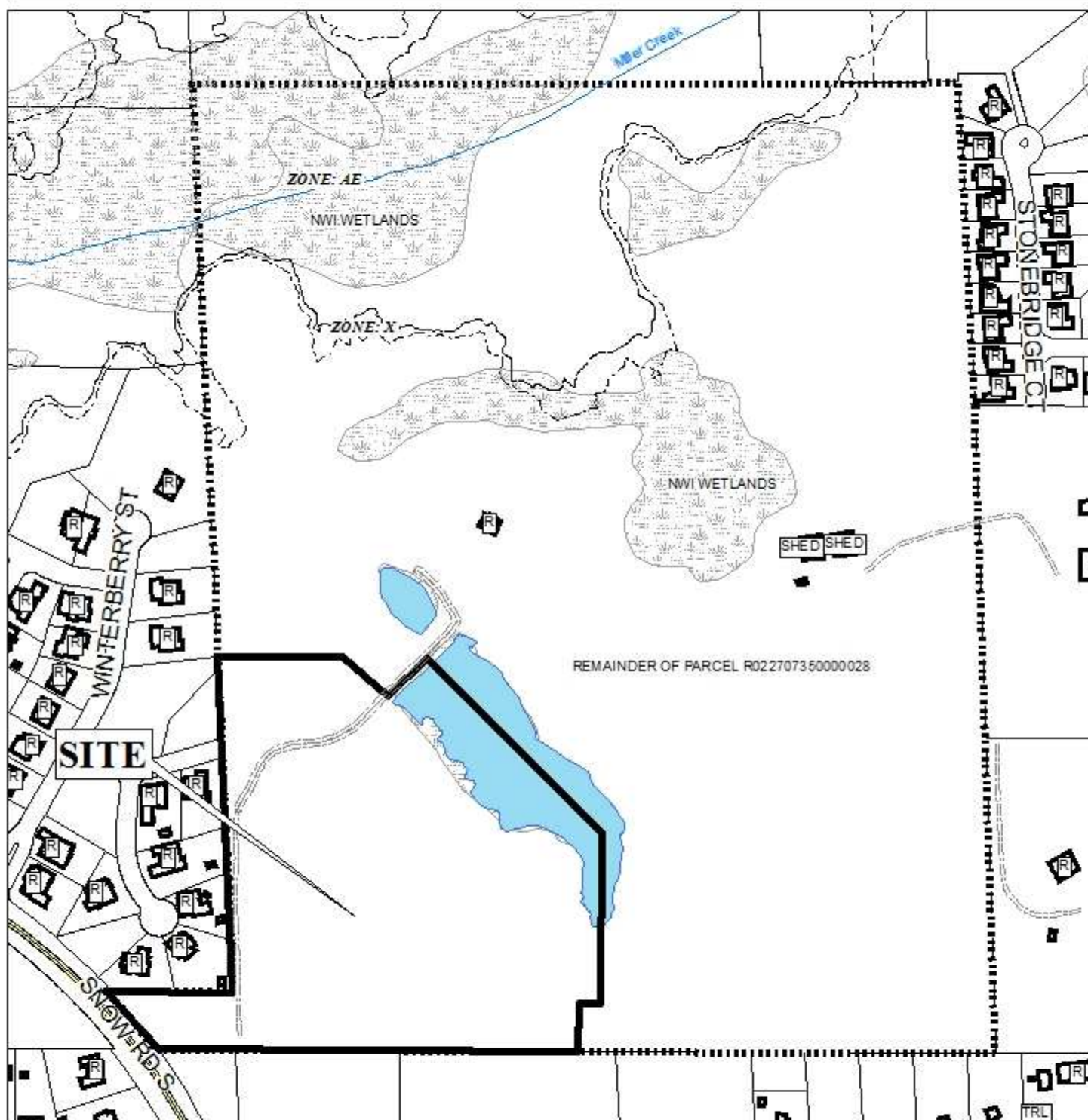
APPLICATION NUMBER 6 DATE August 21, 2014

APPLICANT Amelia Lake Subdivision, Phases 1-2

REQUEST Subdivision



AMELIA LAKE SUBDIVISION, PHASES 1-2



APPLICATION NUMBER 6 DATE August 21, 2014

R-A	R-3	T-B	B-2	B-5	MUN	SD-WH	T5.1
R-1	R-B	B-1	B-3	I-1	OPEN	T3	T5.2
R-2	H-B	LB-2	B-4	I-2	SD	T4	T6



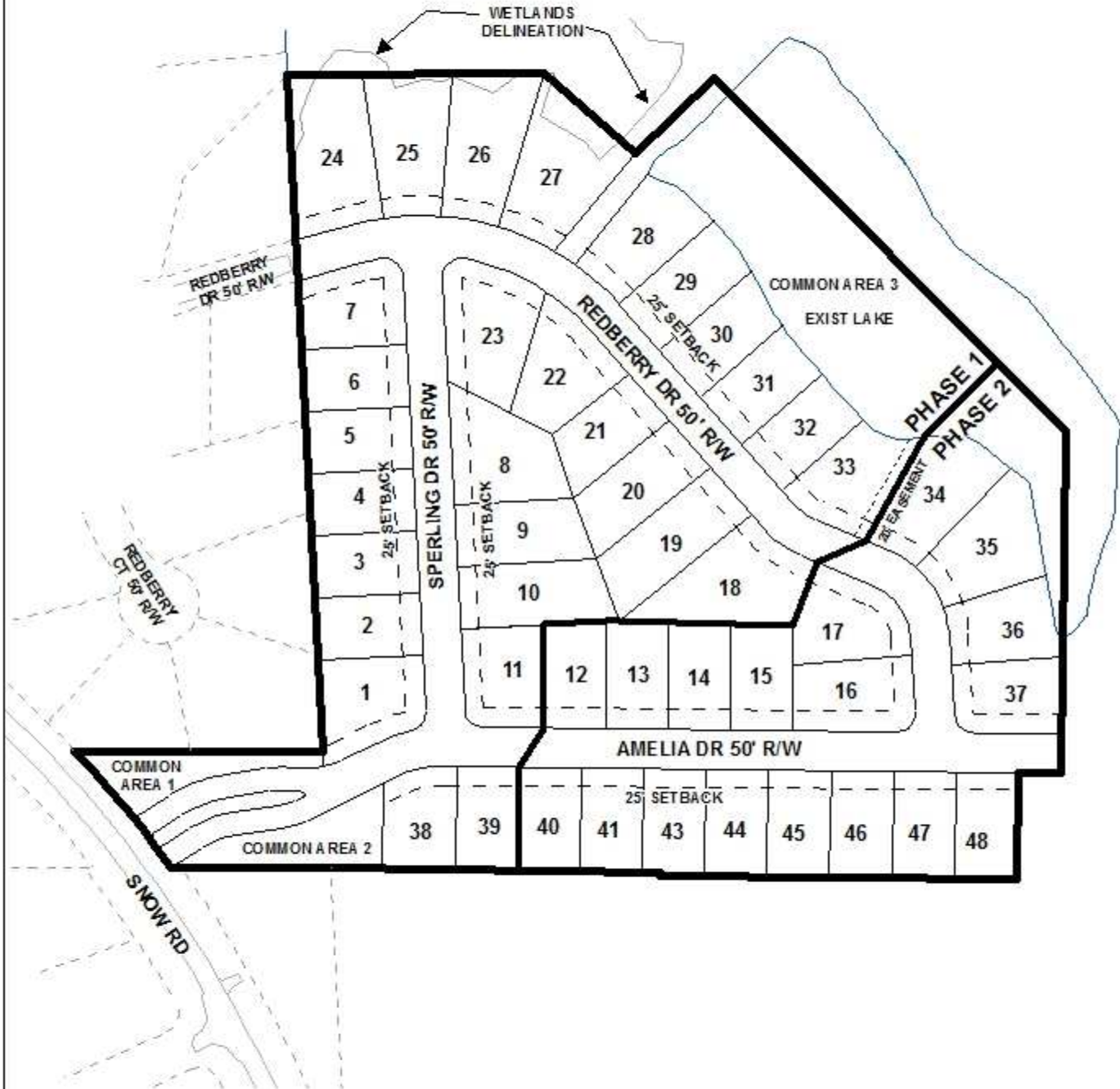
AMELIA LAKE SUBDIVISION, PHASES 1-2



APPLICATION NUMBER 6 DATE August 21, 2014



DETAIL SITE PLAN



APPLICATION NUMBER 6 DATE August 21, 2014

APPLICANT Amelia Lake Subdivision, Phases 1-2

REQUEST Subdivision

