

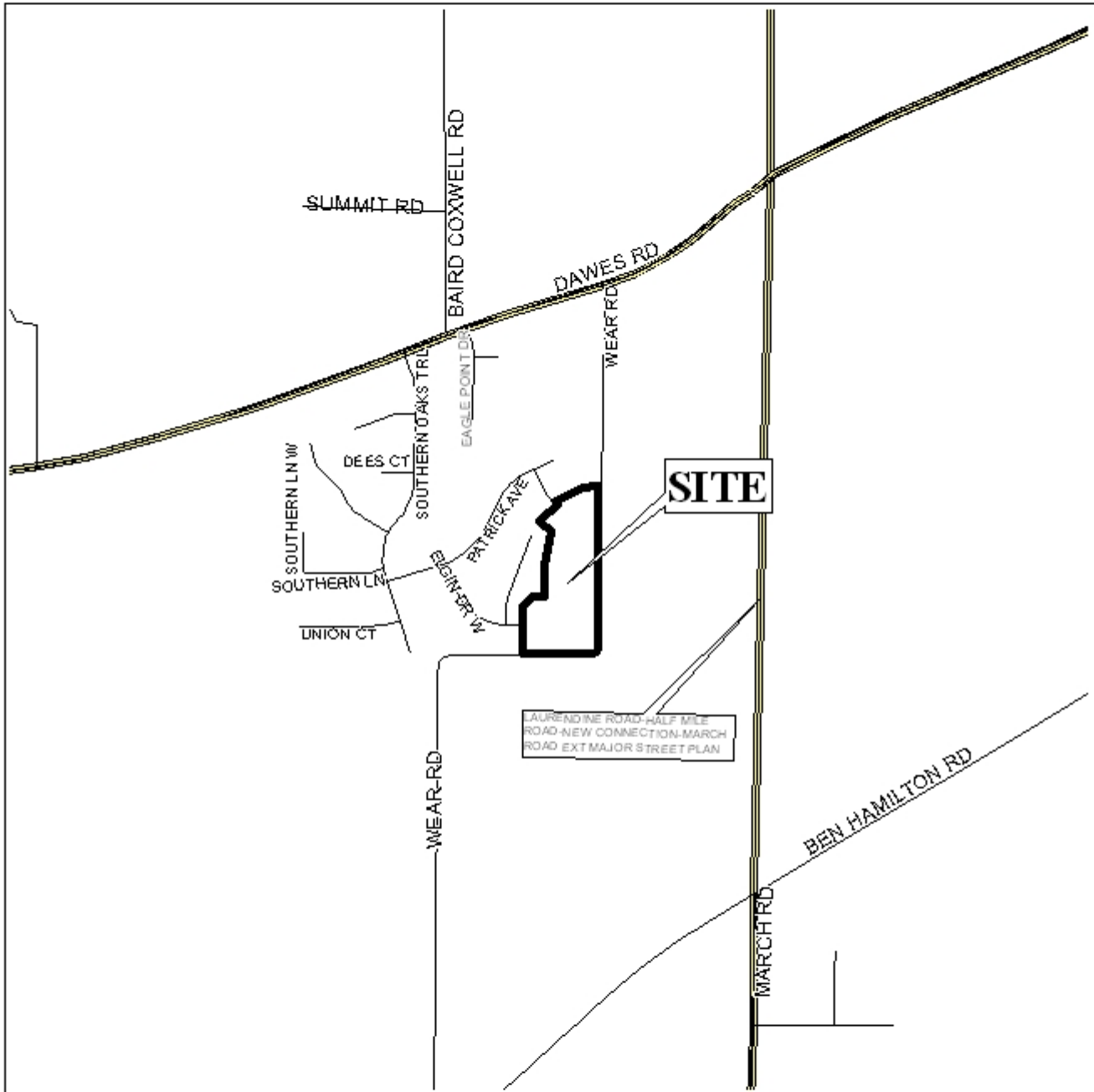
SOUTHERN OAKS ESTATES SUBDIVISION, UNIT 6

This is a request for a one-year extension of a previously approved 29-lot subdivision. The subdivision is located on the Northwest corner of Wear Road (paved) and Wear Road (unpaved).

There have been no changes in conditions in the surrounding area that would affect the subdivision as previously approved; nor have there been any changes in the Regulations that would affect the previous approval. Roads are currently under construction in preparation to record this unit.

Based on the preceding, it is recommended that this request for extension be approved.

LOCATOR MAP












APPLICATION NUMBER 5 DATE December 20, 2007

APPLICANT Southern Oaks Estates Subdivision, Unit 6

REQUEST Subdivision



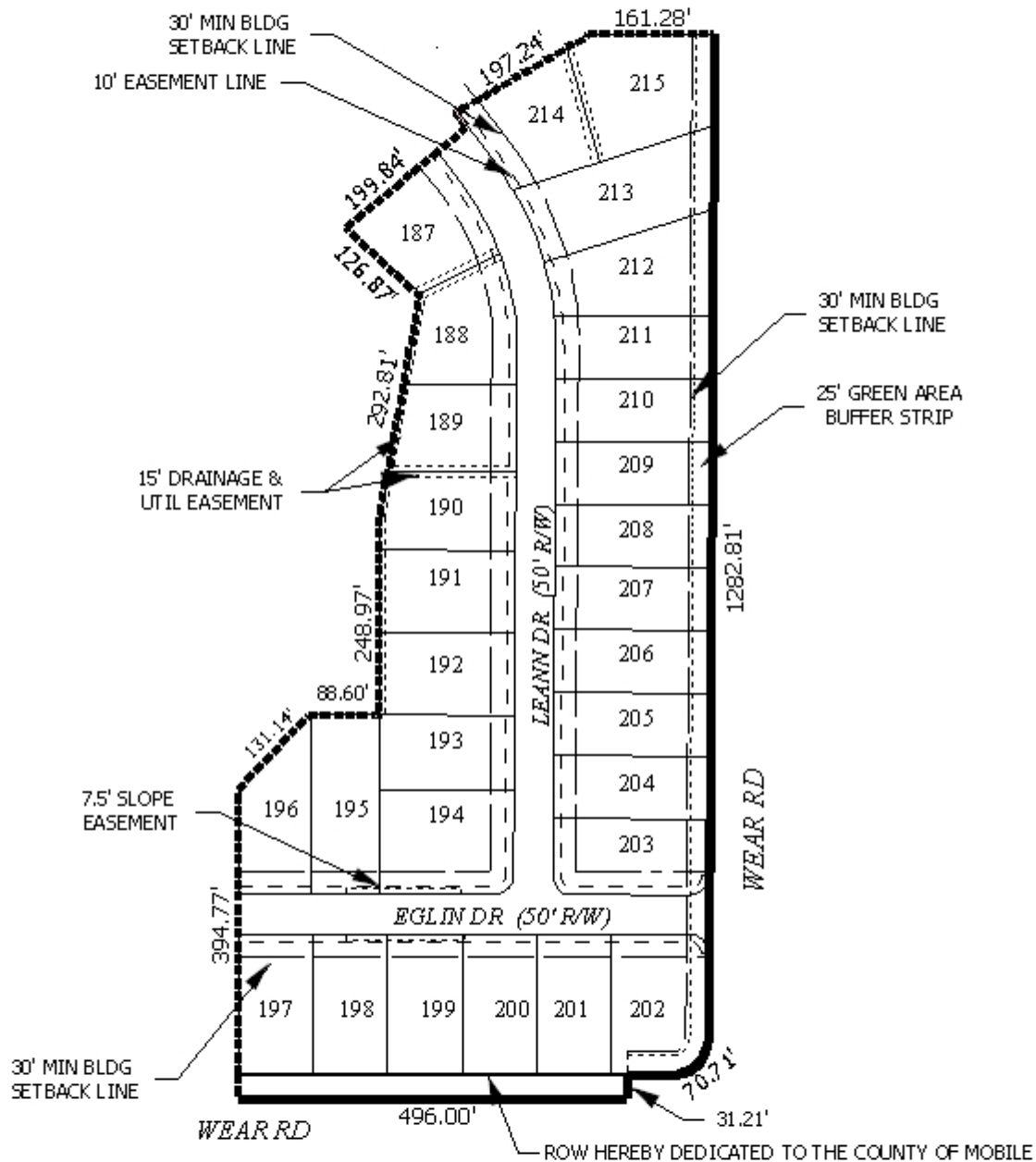
NTS

LEGEND  R-1  R-2  R-3  R-4  R-B  H-B  B-1  LB-2  B-2  B-3  B-4  B-5  I-1  I-2



NTS

DETAIL SITE PLAN



APPLICATION NUMBER 5 DATE December 20, 2007
 APPLICANT Southern Oaks Estates Subdivision, Unit 6
 REQUEST Subdivision



NTS