

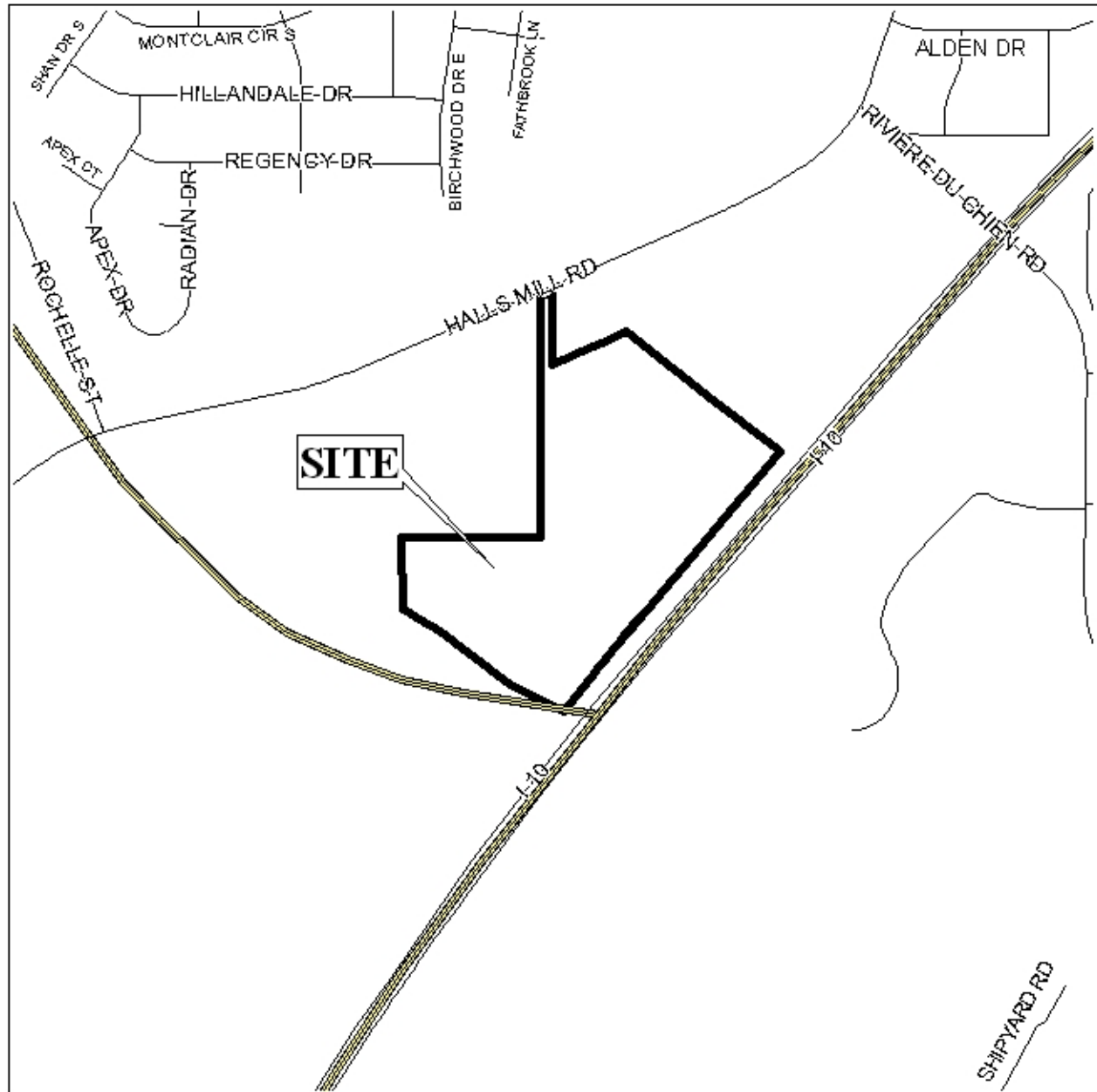
## **LAUGHLIN INDUSTRIAL PARK SUBDIVISION**

This is a request for a one-year extension of a previously approved 19-lot/45.7± acre subdivision. The subdivision is located on the South side of Halls Mill Road, ¼ mile± West of Halls Mill Service Road.

This is the first extension request since the subdivision was approved in May, 2008. There have not been changes in conditions in the surrounding area that would affect the subdivision as previously approved. Streets within the proposed subdivision have been constructed. City Engineering has commented that construction of the subdivision is nearing completion of punch list items, with acceptance by City Engineering expected in the near future.

Based on the preceding, it is recommended that this request for extension be approved.

## LOCATOR MAP



APPLICATION NUMBER 4 DATE May 7, 2009

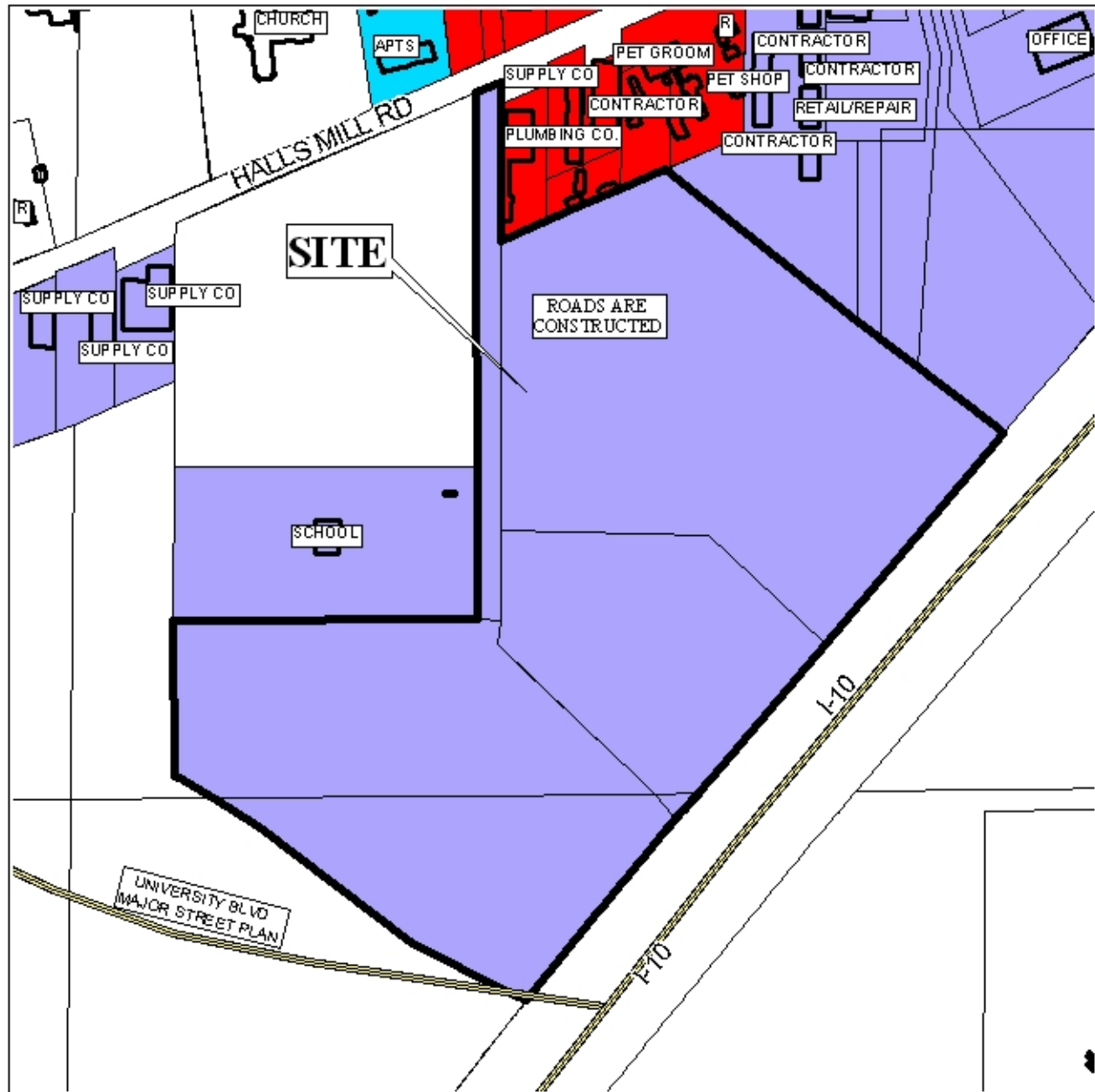
APPLICANT Laughlin Industrial Park Subdivision

REQUEST Subdivision



NTS

# LAUGHLIN INDUSTRIAL PARK SUBDIVISION



APPLICATION NUMBER 4 DATE May 7, 2009

LEGEND

R-1	R-2	R-3	R-A	R-B	H-B	T-B	B-1	LB-2	B-2	B-3	B-4	B-5	I-1	I-2
-----	-----	-----	-----	-----	-----	-----	-----	------	-----	-----	-----	-----	-----	-----



NTS



# LAUGHLIN INDUSTRIAL PARK SUBDIVISION

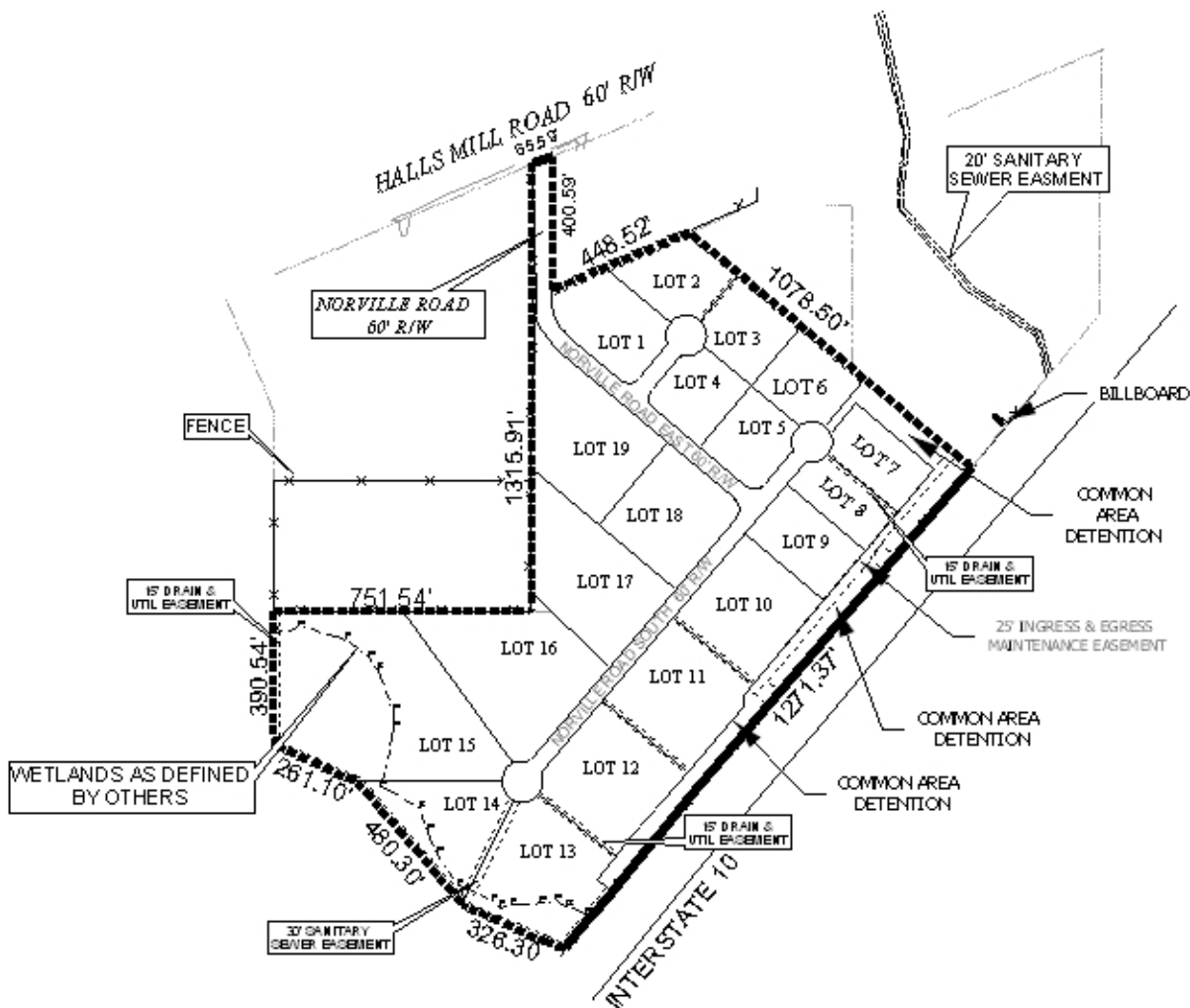


APPLICATION NUMBER 4 DATE May 7, 2009



NTS

# SITE PLAN



The site plan illustrate easements, fences, billboard, and detention area.

APPLICATION NUMBER 4 DATE May 7, 2009  
 APPLICANT Laughlin Industrial Park Subdivision  
 REQUEST Subdivision



NTS