

THEODORE INDUSTRIAL PARK SUBDIVISION

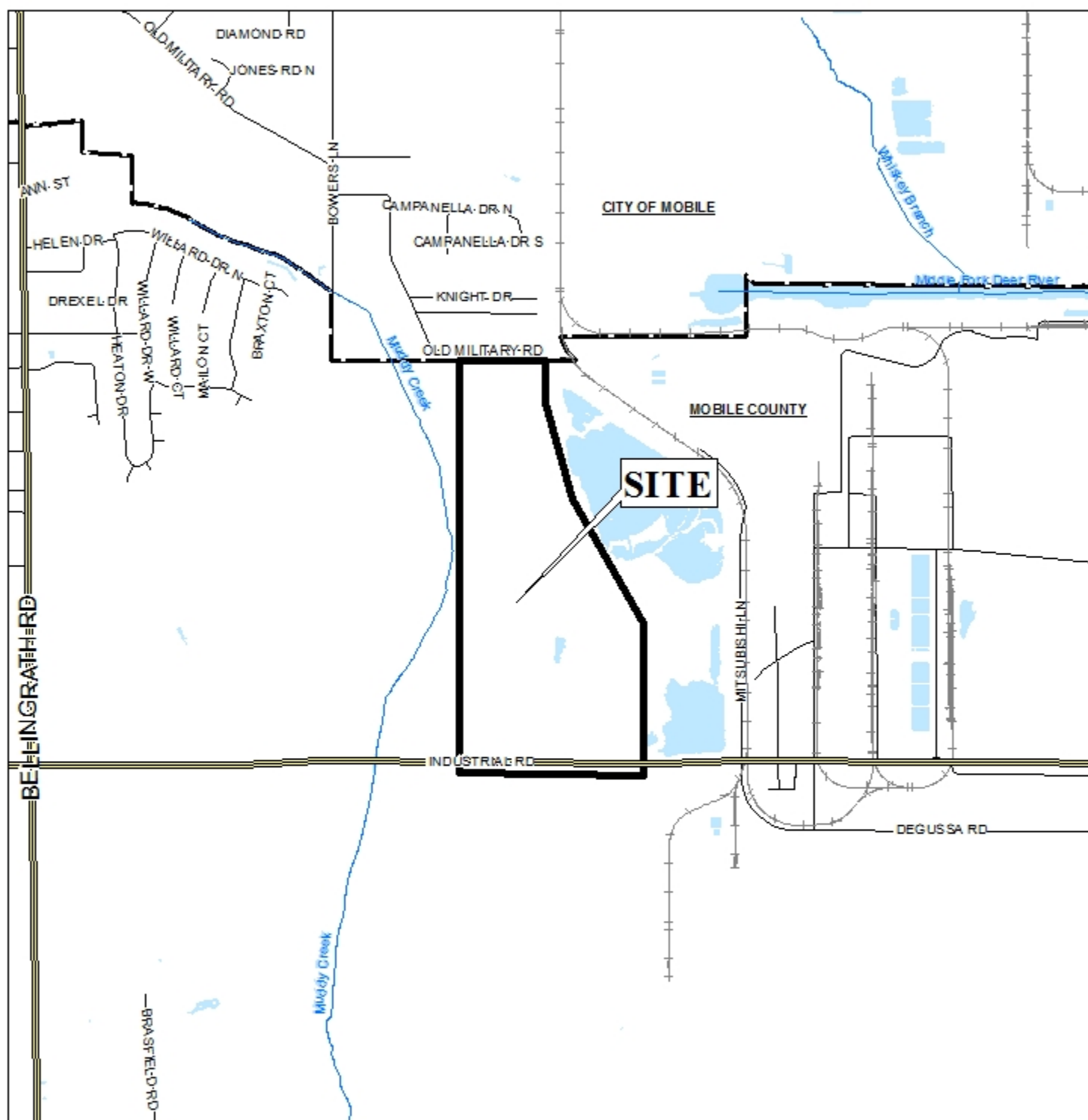
This is a request for a one-year extension of a previously approved 3-lot subdivision. The subdivision is located on the North side of Industrial Road at the South terminus of Bowers Lane, extending to the West side of Mitsubishi Lane, in the Planning Jurisdiction.

This is the first extension request since the subdivision was originally approved in December, 2014.

There have been no changes in conditions in the surrounding area that would affect the subdivision as previously approved. The applicant states simply that large corporations take a long time to make decisions as the justification for the extension request.

Based on the preceding, it is recommended that this request for extension be approved and that the applicant be advised that future extensions will be unlikely.

LOCATOR MAP



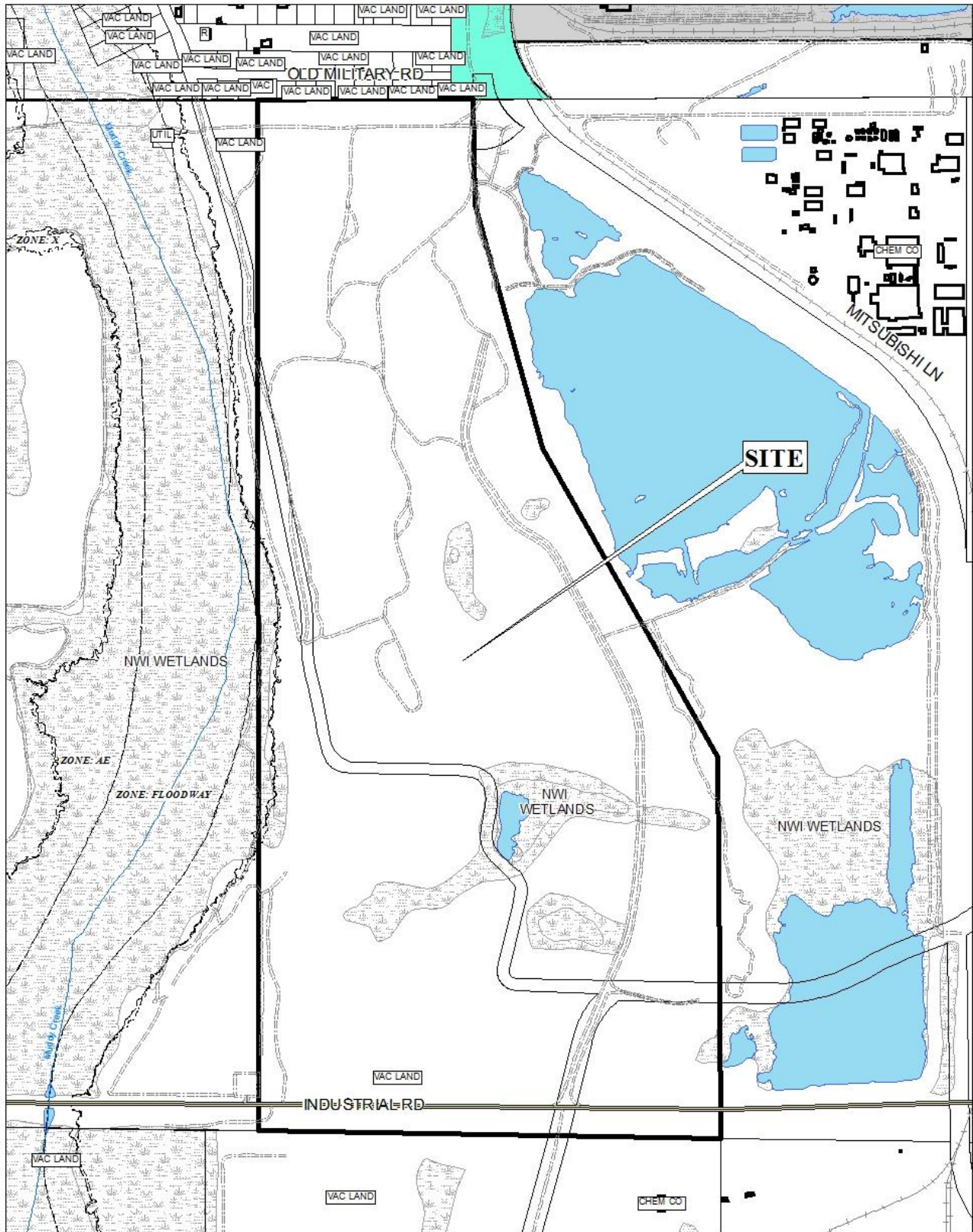
APPLICATION NUMBER 3 DATE December 17, 2015

APPLICANT Theodore Industrial Park Subdivision

REQUEST Subdivision



THEODORE INDUSTRIAL PARK SUBDIVISION

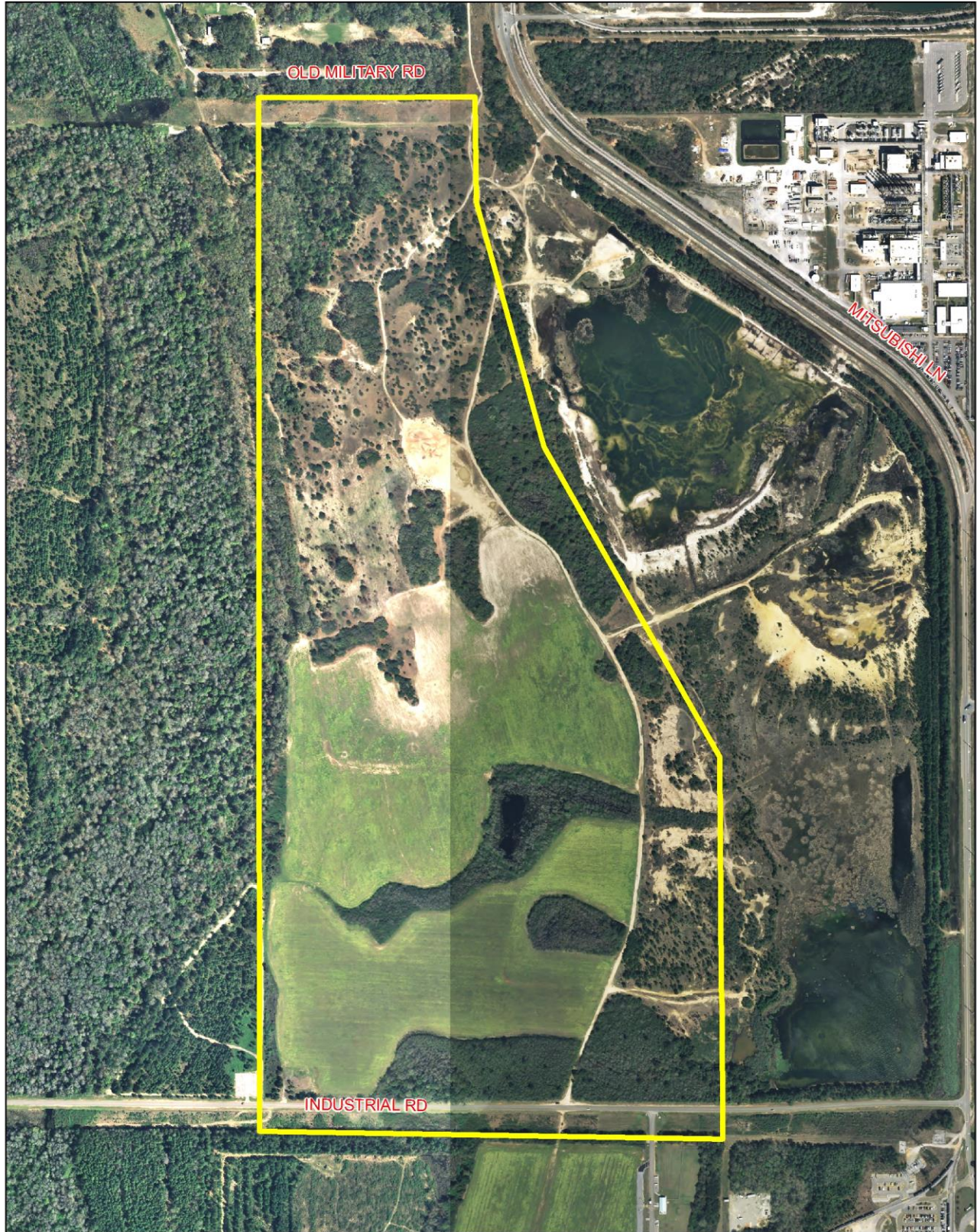


APPLICATION NUMBER 3 DATE December 17, 2015

R-A	R-3	T-B	B-2	B-5	MUN	SD-WH	T5.1
R-1	R-B	B-1	B-3	I-1	OPEN	T3	T5.2
R-2	H-B	LB-2	B-4	I-2	SD	T4	T6



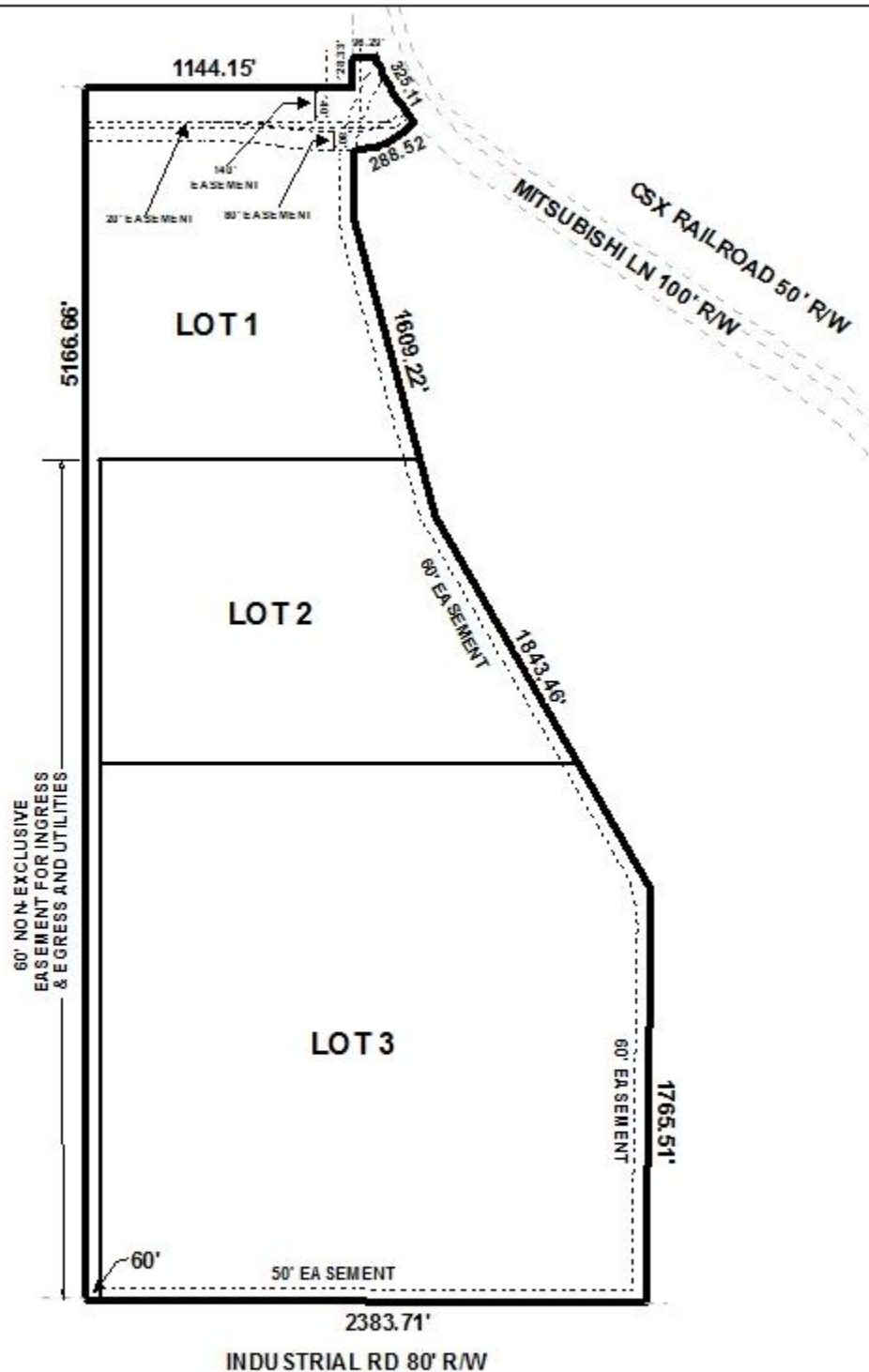
THEODORE INDUSTRIAL PARK SUBDIVISION



APPLICATION NUMBER 3 DATE December 17, 2015



DETAIL SITE PLAN



APPLICATION NUMBER 3 DATE December 17, 2015

APPLICANT Theodore Industrial Park Subdivision

REQUEST Subdivision

