

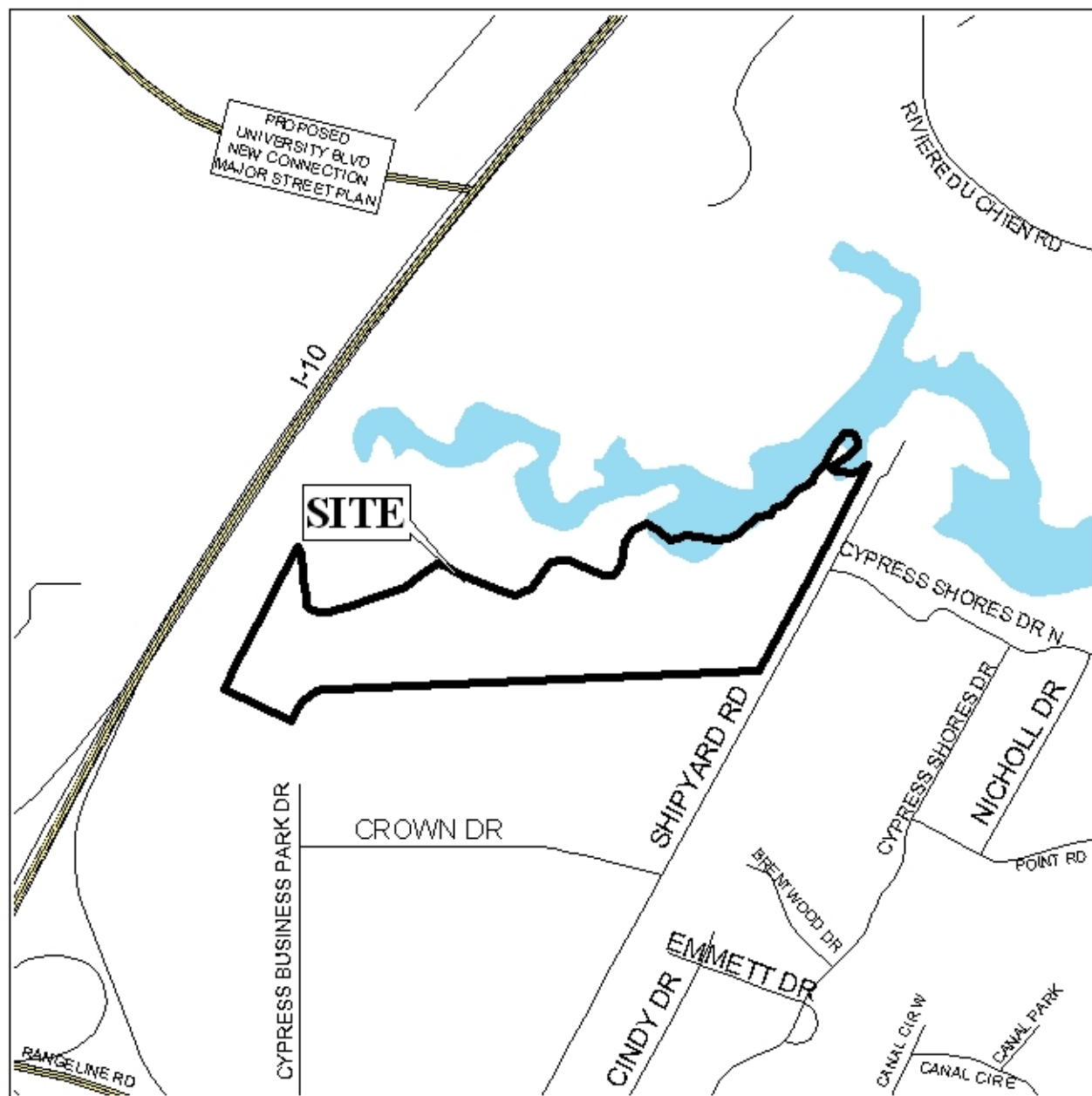
THE BLUFFS AT CYPRESS CREEK SUBDIVISION

This is a request for a one-year extension of a previously approved 53-lot subdivision. The subdivision is located 350'± North of the North terminus of Cypress Business Park Drive, extending East along the North side of the proposed extension of Cypress Business Park Drive to the L & N Railroad right-of-way.

This is the sixth extension request since the subdivision was originally approved in 2003. The applicant has resubmitted this development as a phased subdivision, illustrating Phase One, a portion of the originally approved subdivision and the remainder as "Future Development" (Phase Two), which was approved by the Planning Commission at its May 21, 2009 meeting. It should be noted that the plat for this recently approved subdivision was signed by Planning staff on October 13, 2009, but has not yet to be recorded. It should be noted that road construction and utilities are complete.

It is recommended that this request for extension be denied, as it has been superseded by the subdivision approved by the Planning Commission at its May 21, 2009 meeting.

LOCATOR MAP



APPLICATION NUMBER 3 DATE November 5, 2009

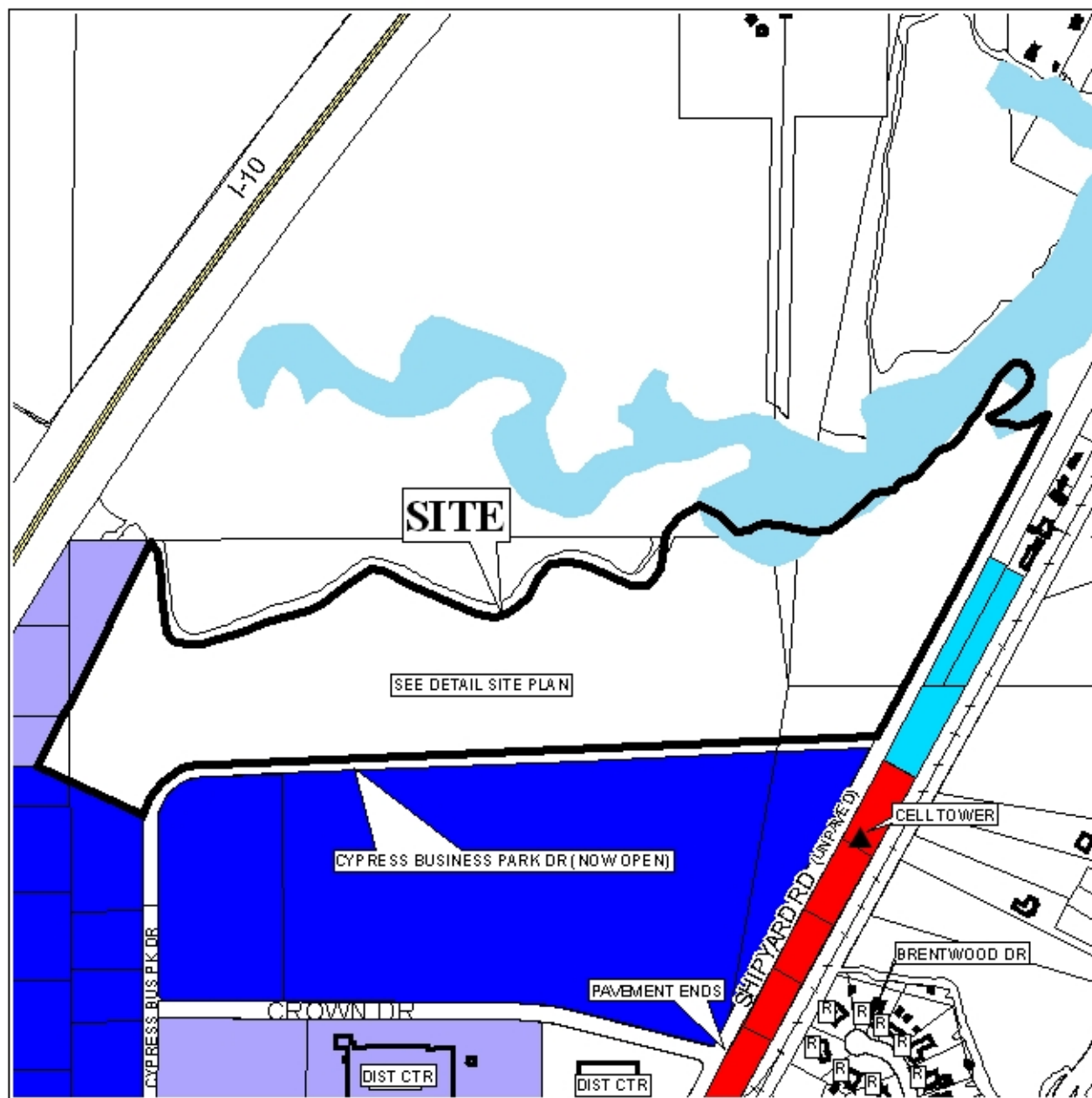
APPLICANT The Bluffs at Cypress Creek Subdivision

REQUEST Subdivision



NTS

THE BLUFFS AT CYPRESS CREEK SUBDIVISION



APPLICATION NUMBER 3 DATE November 5, 2009

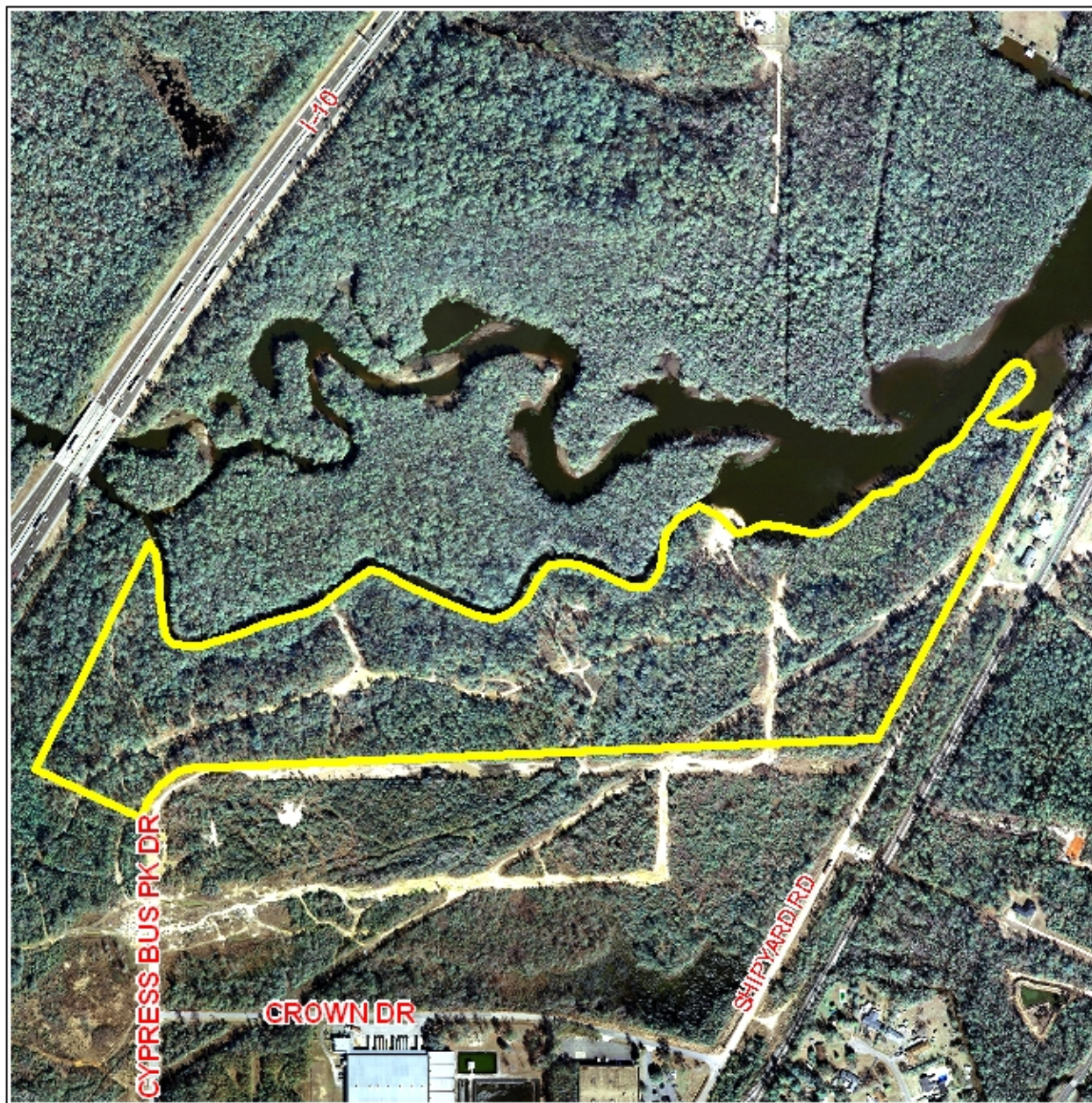
LEGEND

R-1	R-2	R-3	R-A	R-B	H-B	T-B	B-1	LB-2	B-2	B-3	B-4	B-5	I-1	I-2
-----	-----	-----	-----	-----	-----	-----	-----	------	-----	-----	-----	-----	-----	-----



NTS

THE BLUFFS AT CYPRESS CREEK SUBDIVISION

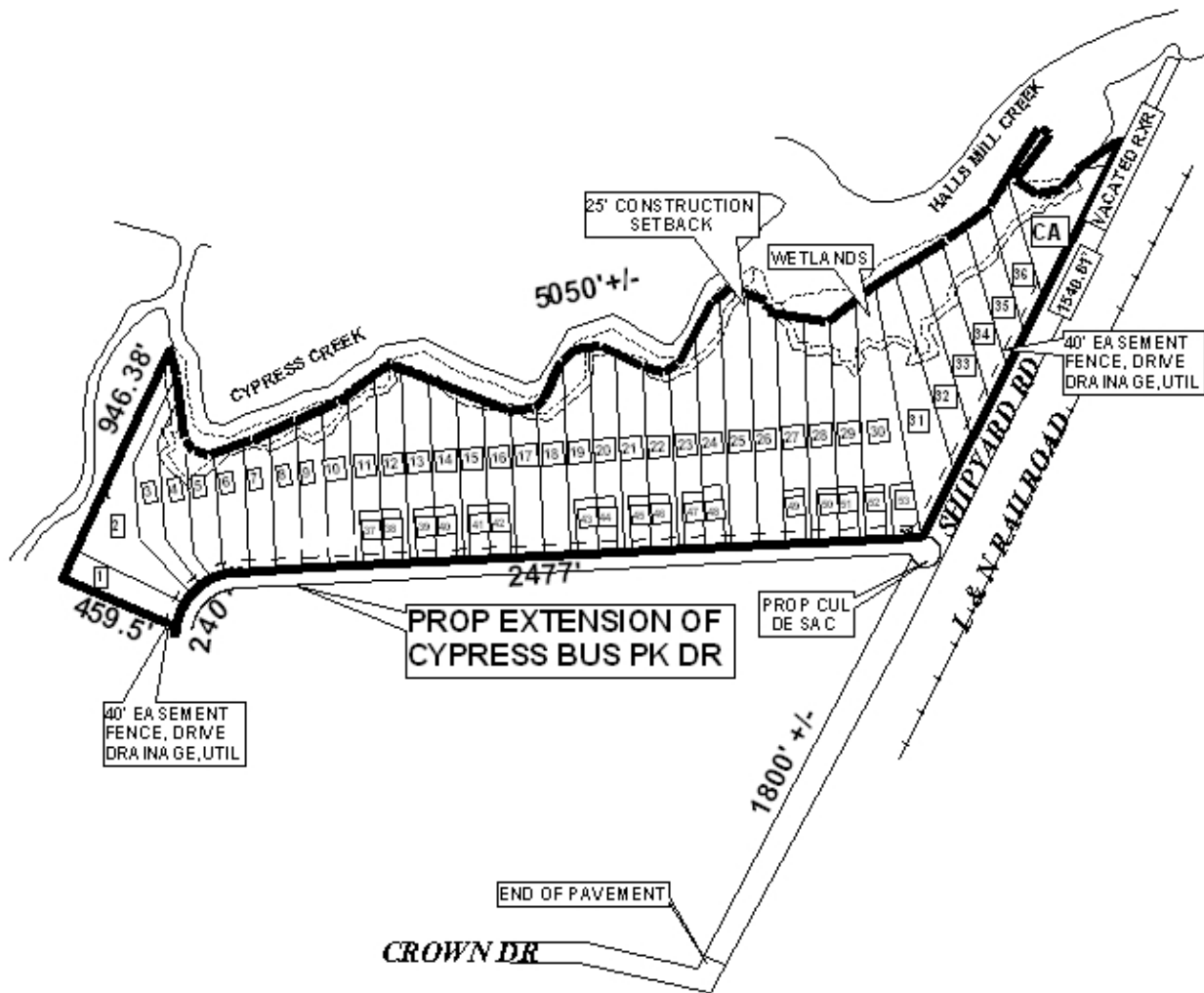


APPLICATION NUMBER 3 DATE November 5, 2009



NTS

DETAIL SITE PLAN



APPLICATION NUMBER 3 DATE November 5, 2009

APPLICANT The Bluffs at Cypress Creek Subdivision

REQUEST Subdivision



NTS