

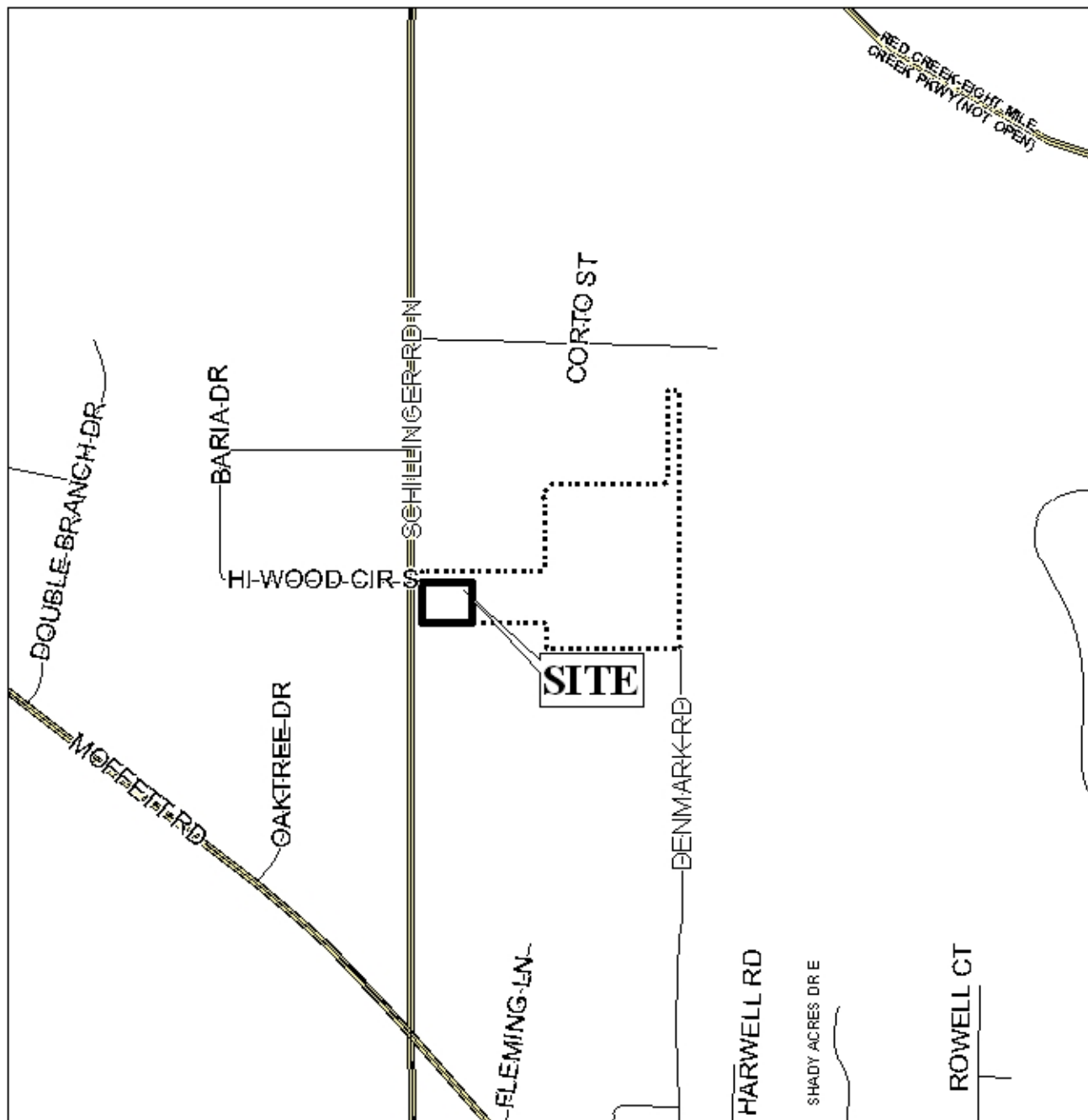
ALEXIS PLACE COMMERCIAL PARK SUBDIVISION

This is a request for a one-year extension of a previously approved 2-lot subdivision. The subdivision is located on the East side of Schillinger Road North at the East terminus of Hi Wood Circle South.

There have been no extensions since the subdivision was originally approved on May 7, 2009, and no units have been recorded. There have been no changes in the condition of the surrounding area(s) that would affect the subdivision as previously approved, nor have there been any changes to the regulations that would affect the previous approval.

Based on the preceding, it is recommended that this request for extension be approved.

LOCATOR MAP



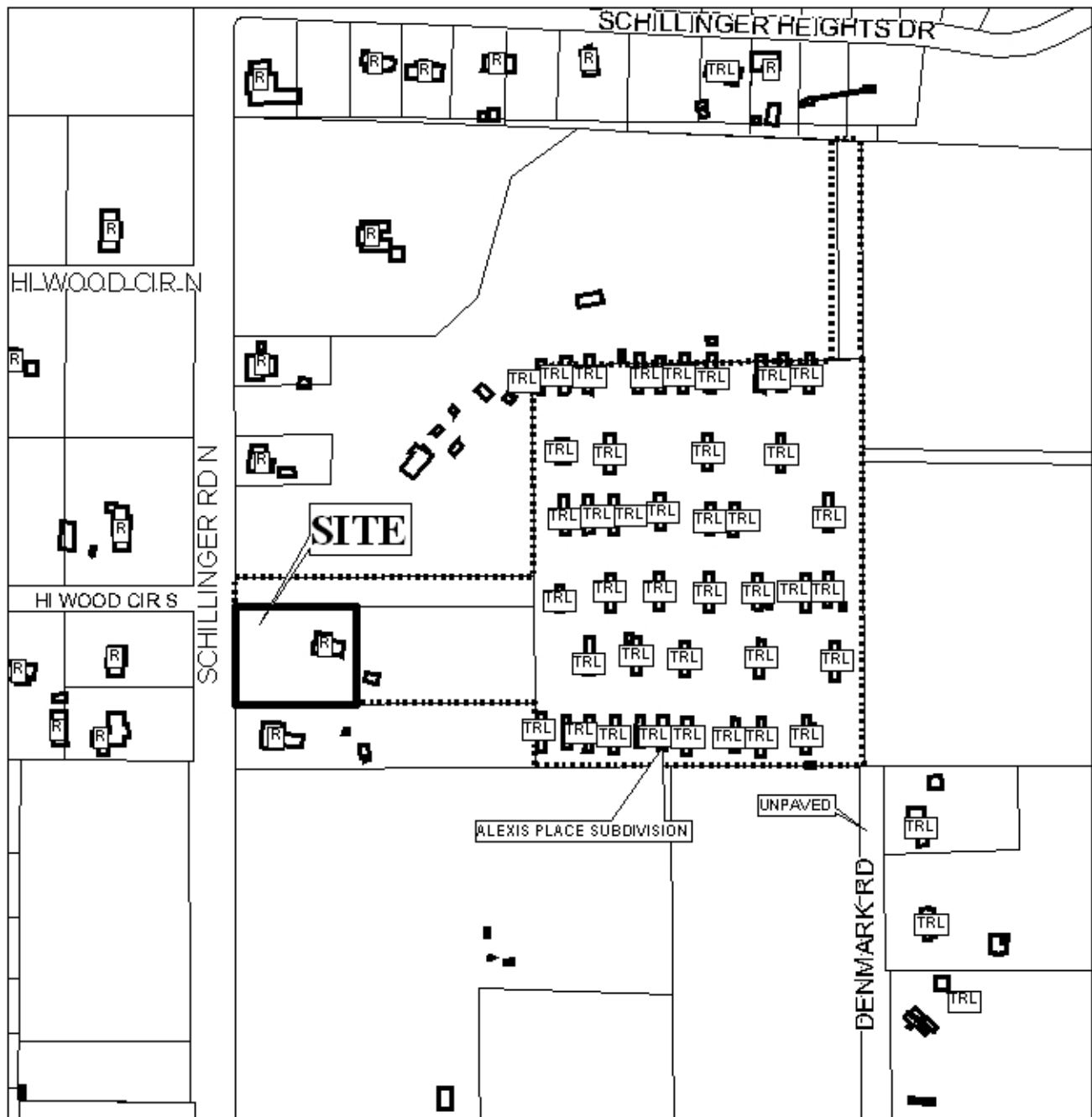
APPLICATION NUMBER 3 DATE June 3, 2010

APPLICANT Alexis Place Commercial Park Subdivision

REQUEST Subdivision



ALEXIS PLACE COMMERCIAL PARK SUBDIVISION

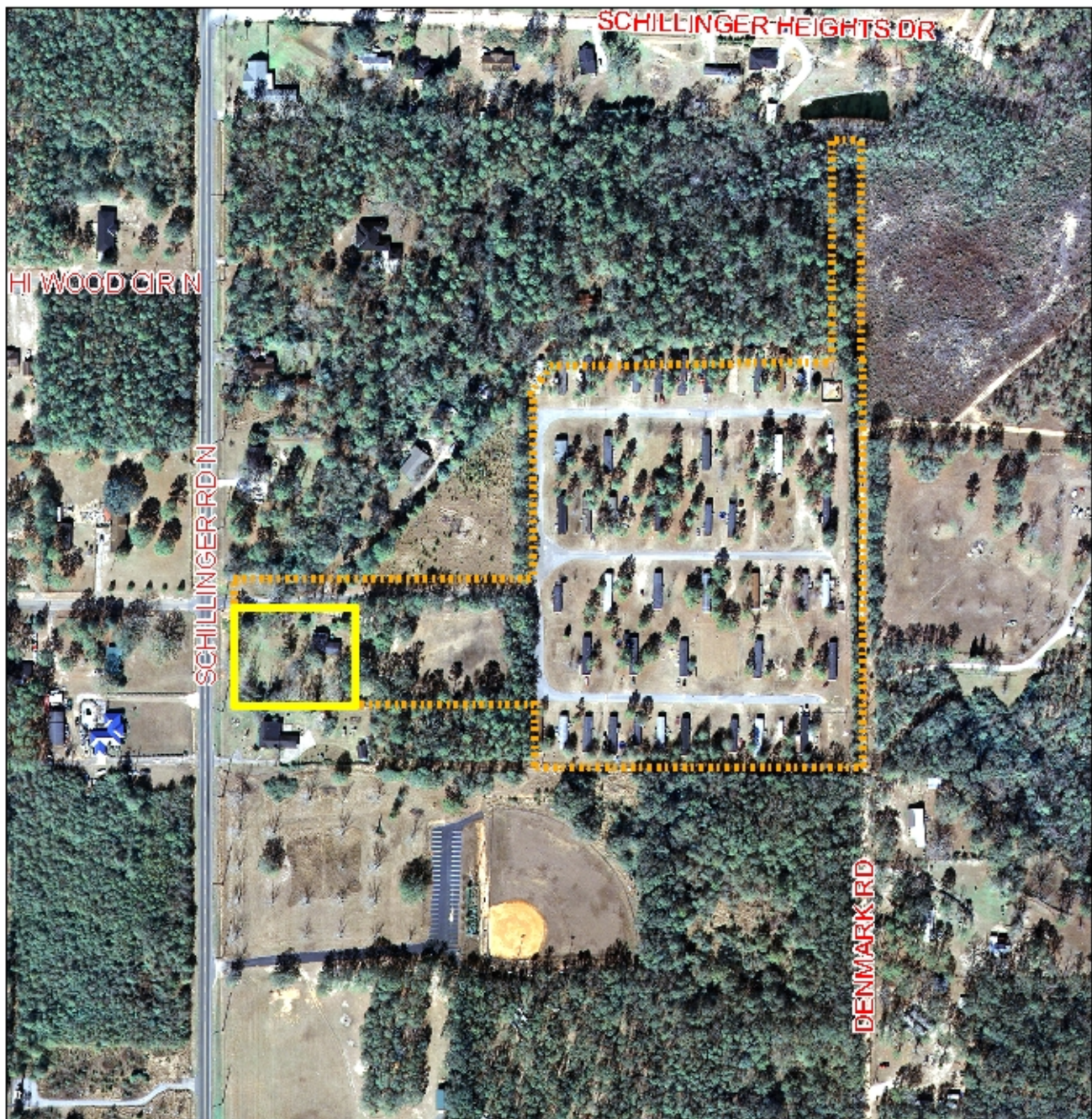


APPLICATION NUMBER 3 DATE June 3, 2010

LEGEND R-1 R-2 R-3 R-A R-B H-B T-B B-1 LB-2 B-2 B-3 B-4 B-5 I-1 I-2

N
NTS

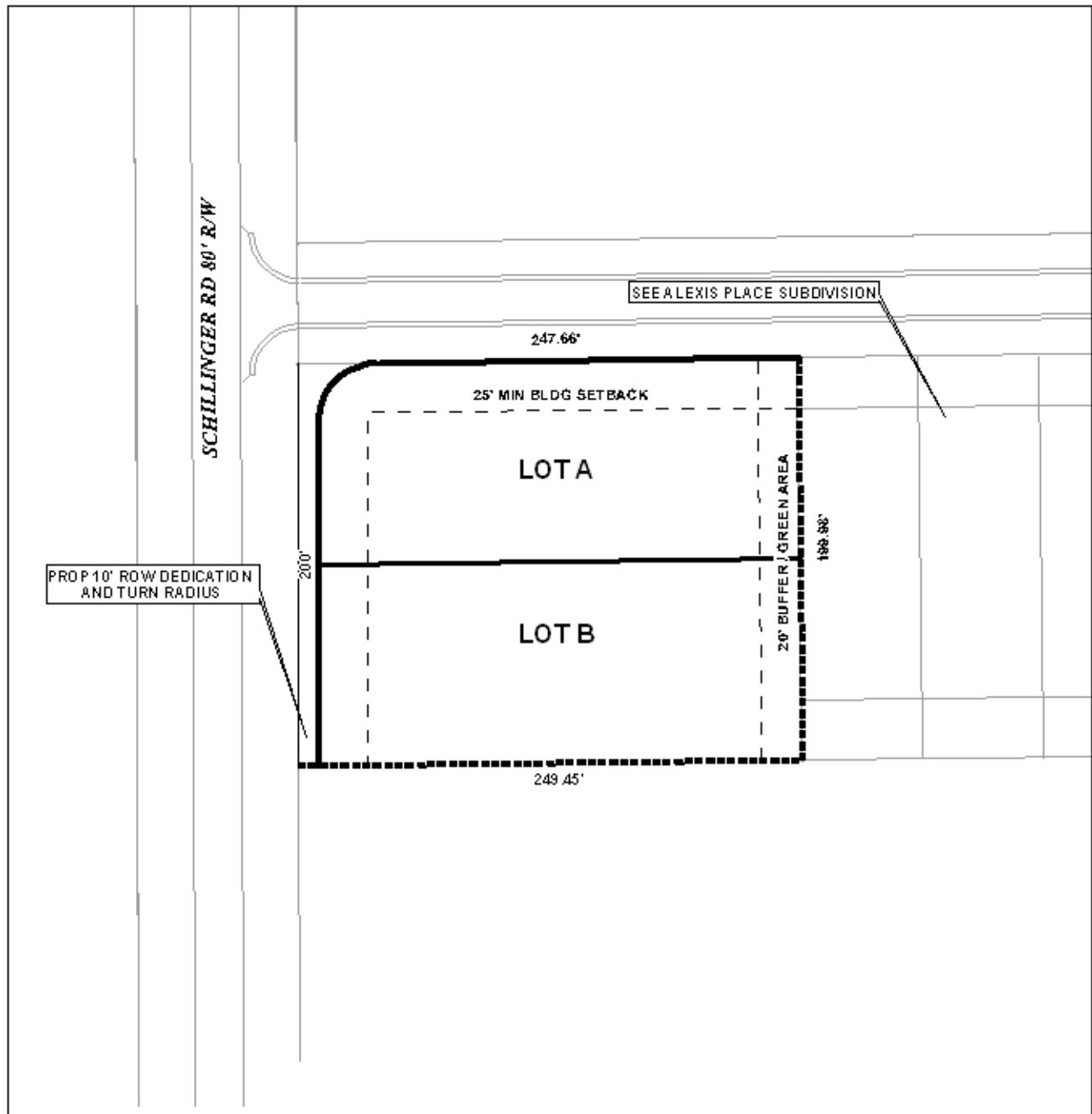
ALEXIS PLACE COMMERCIAL PARK SUBDIVISION



APPLICATION NUMBER 3 DATE June 3, 2010



DETAIL SITE PLAN



APPLICATION NUMBER 3 DATE June 3, 2010

APPLICANT Alexis Place Commercial Park Subdivision

REQUEST Subdivision

