

## **LABRADOR RUN SUBDIVISION**

This is a request for a one-year extension of a previously approved 413-lot subdivision. The subdivision is located on the Southern termini of Rex Drive and Hanna Court, extending West to Ben Hamilton Road, in the county.

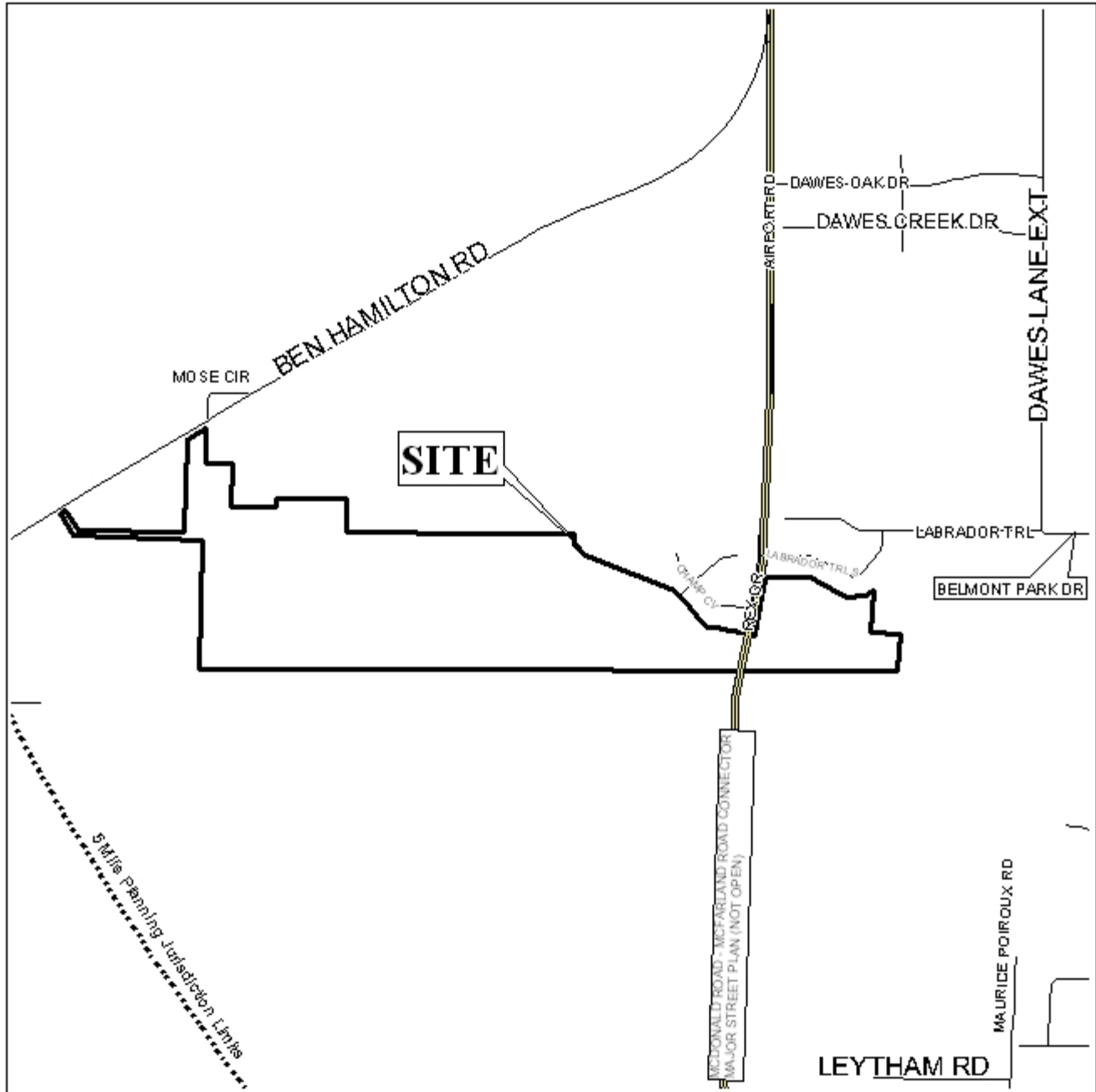
This is the first extension request since the subdivision was originally approved at the Planning Commission's July 23, 2010 meeting. This is a modified version of a previously approved subdivision that was approved by the Planning Commission at its September 21, 2006 meeting. It should be noted that Phase One and Phase Two of the original subdivision were recorded on July 21, 2008. Because the last recording of the original approval was in 2008, the approval of that version of the subdivision has expired, leaving the current modified subdivision.

There have been no changes in conditions in the surrounding area that would affect the subdivision as previously approved. The applicant states the reason for the extension is due to anticipation of future development.

It should be noted that road construction is required for the recording of the subdivision. No road construction or any other development part of the modified subdivision has begun to date.

Due to the fact that road construction has not begun, this request for extension is recommended for denial.

# LOCATOR MAP



APPLICATION NUMBER 3 DATE July 21, 2011

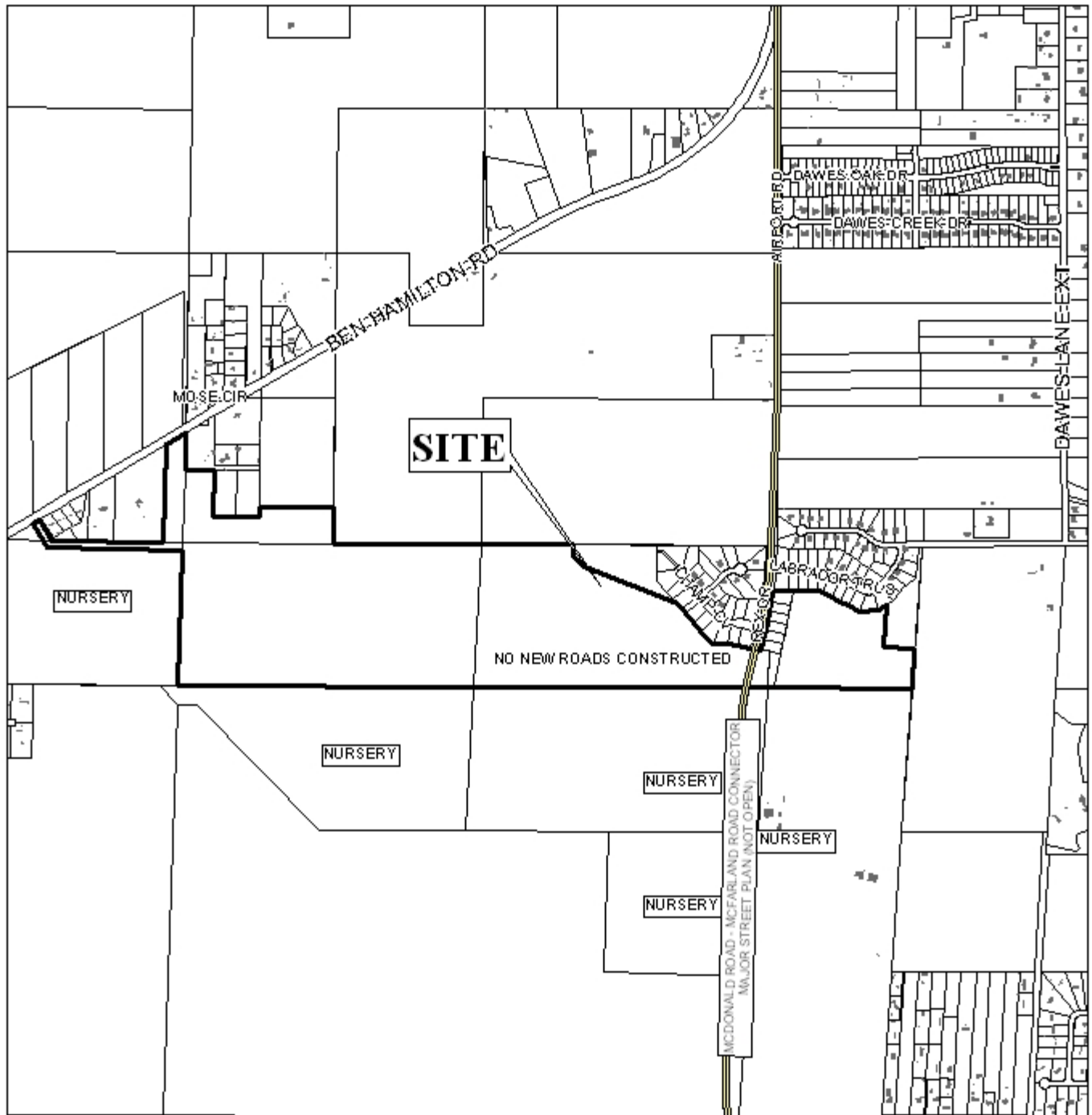
APPLICANT Labrador Run Subdivision

REQUEST Subdivision



NTS

# LABRADOR RUN SUBDIVISION



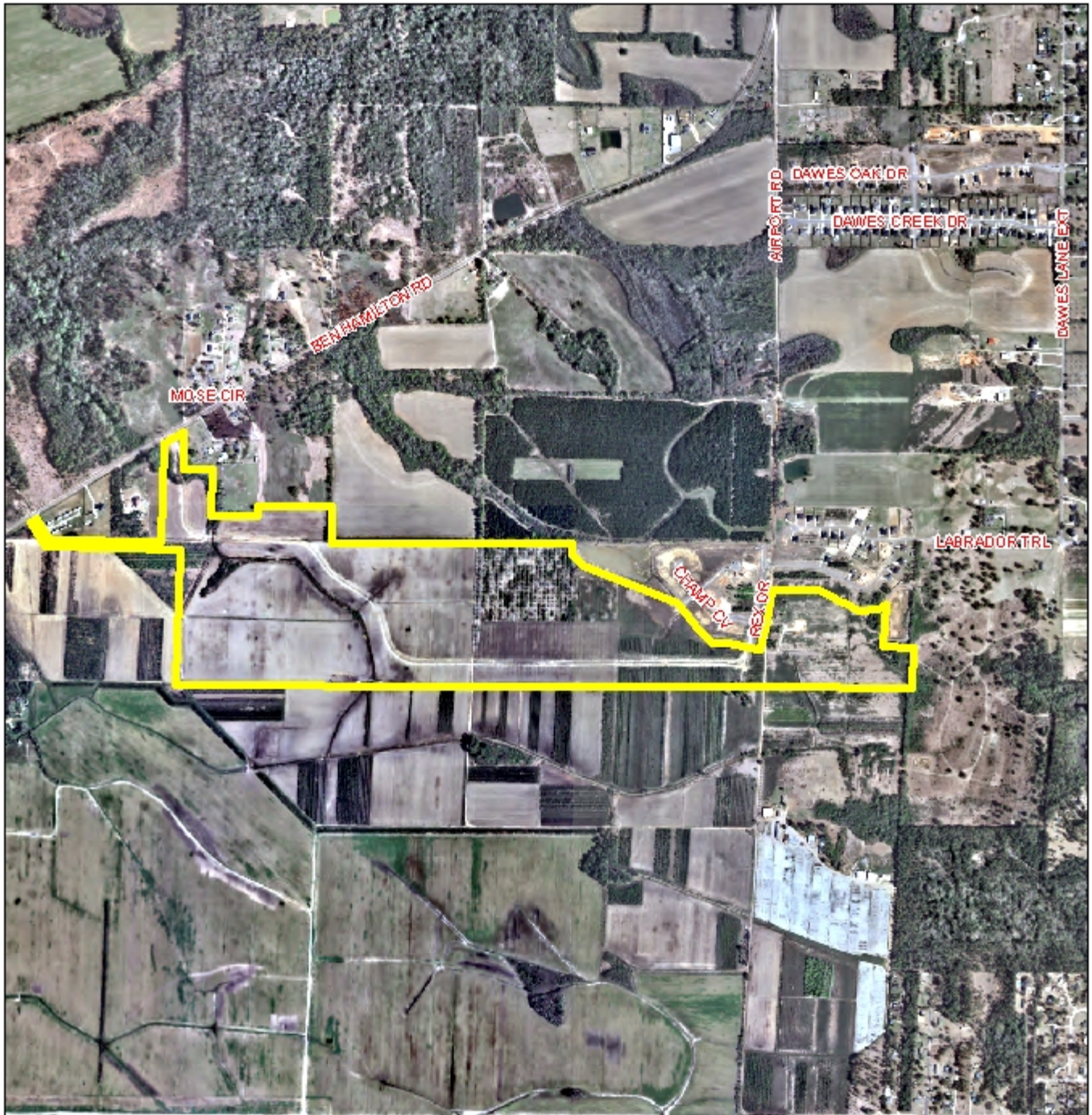
APPLICATION NUMBER 3 DATE July 21, 2011

LEGEND



N  
NTS

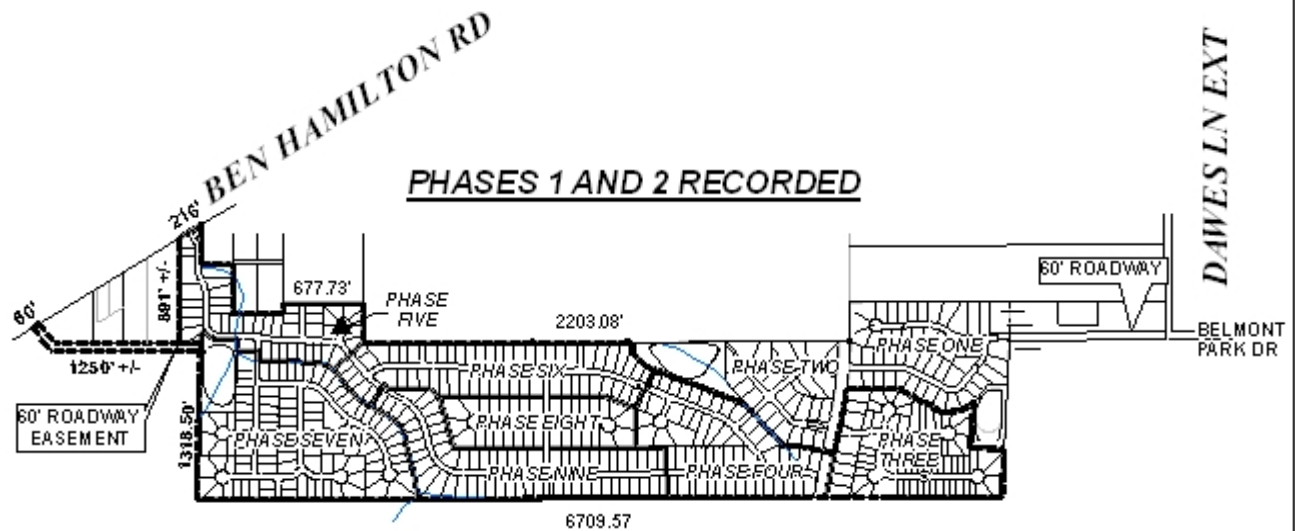
# LABRADOR RUN SUBDIVISION



APPLICATION NUMBER 3 DATE July 21, 2011



# DETAIL SITE PLAN



APPLICATION NUMBER 3 DATE July 21, 2011  
APPLICANT Labrador Run Subdivision  
REQUEST Subdivision

