

**CITY OF MOBILE
DOWNTOWN AREA
INFRASTRUCTURE REPAIR AND REPLACEMENT**

**SECTION I.
FLAGSTONE PAVERS AND PAVING STONE**

A. GENERAL

Referenced Technical Specifications
Specification No. S-820 Pavers and Paving Stone (See Appendix)

1. REMOVAL

Existing flagstone pavers have a nominal thickness of 1 inch or 1 ½ inches. The pavers are nominally 16 ½ - 17 inches wide and of random length. The site should be investigated to determine thickness of existing pavers. All new construction should be of 1 ½ inch pavers.

Flagstone pavers are very fragile. Generally it is not possible to remove and reset this item.

All flagstone pavers are placed on a 4 inch thick concrete slab with reinforcement. Pavers are bedded with a Portland Cement setting compound.

2. REPLACEMENT

a. CONCRETE FOR FOUNDATION

Concrete mix design and placement shall be in accordance with Section E of this Manual. See Pages I-3, 4 & 5 for details.

b. FLAGSTONE

The approved flagstone for use in Downtown Mobile is classified as "Pennsylvania Bluestone". See Specification No. 820 for material requirements.

Type of flagstone to use should generally be the same type as existing on the street. If the work requires the removal of the concrete foundation, the replacement shall be 1 ½ inch flagstone. For areas where no existing flagstone is present, new flagstone shall be 1 ½ inches thick.

The permittee shall obtain sufficient flagstone for the re-installation. Small quantities may be purchased from the City if available. Some other sources of flagstone pavers are as follows:

International Tile & Stone Co.	Mobile, Al.
Gulf Coast Stone,	Spanish Fort Al.
Johnston & Rhodes Bluestone Co.	East Branch, New Jersey

c. SUBGRADE PREPARATION

Subgrade under new concrete foundation shall be shaped and the upper 6 inches compacted. Any material considered unsuitable by the City's Inspector shall be removed and replaced with approved material.

d. FLAGSTONE PLACEMENT

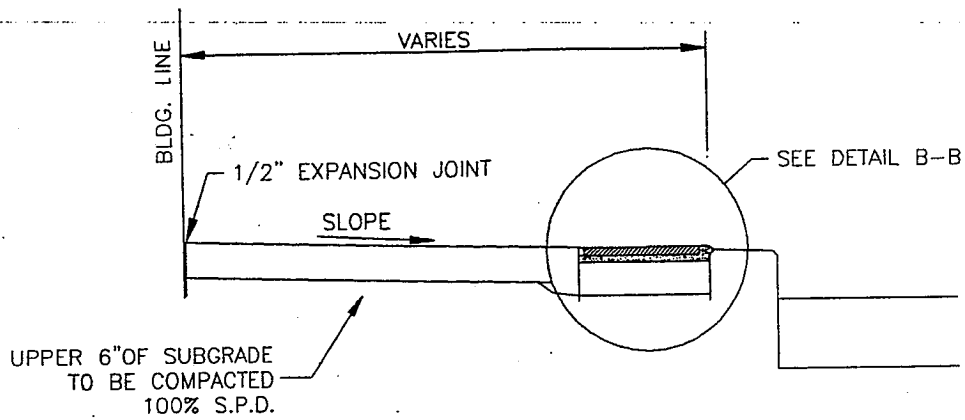
Prior to setting flagstone, the permittee shall place a concrete foundation as shown on page I-3. Depth of foundation below finished surface of adjacent sidewalk will depend on thickness of flagstone and shall be determined prior to placement.

Bedding and placement of the flagstone shall comply with Specification S-820.

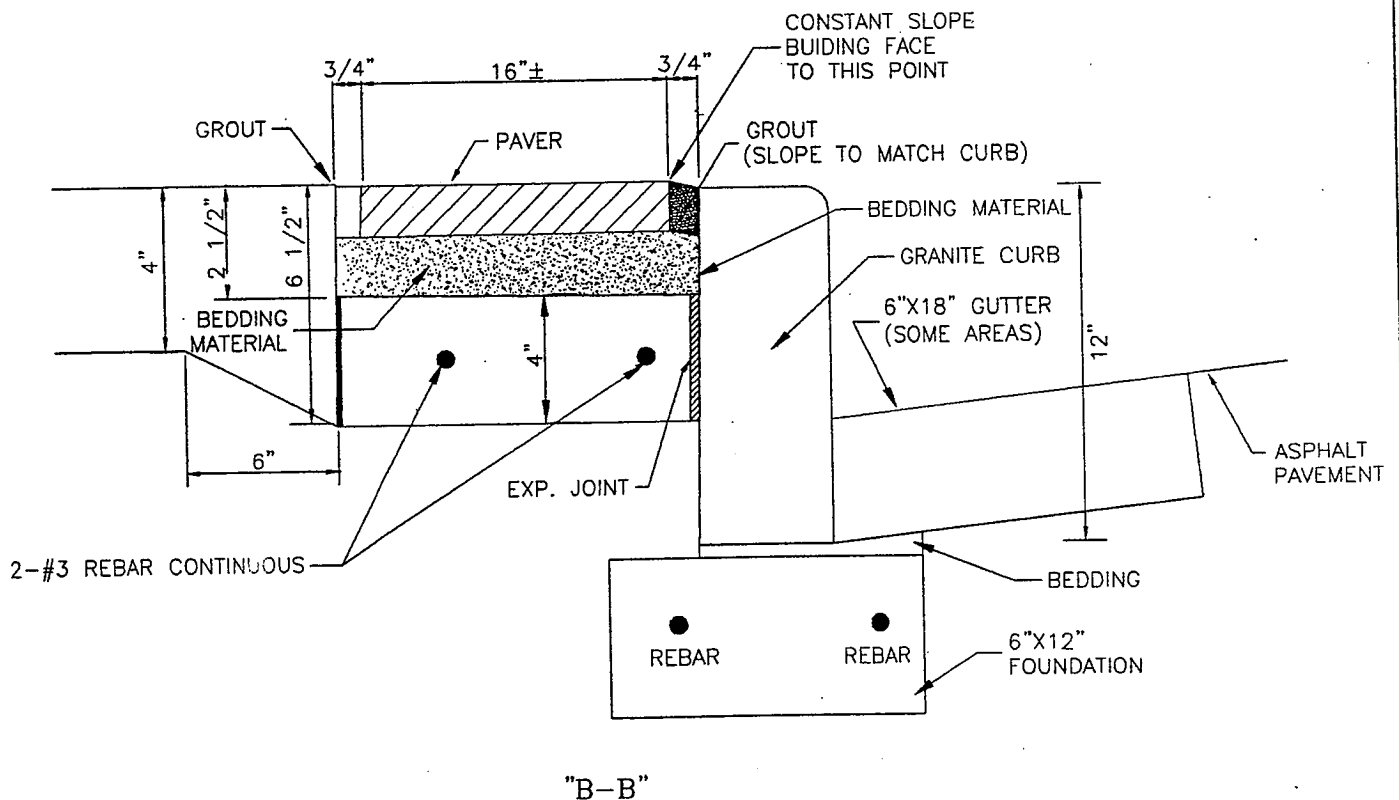
Horizontal joints shall be uniform. After setting and curing, the joints shall be filled and dressed with grout, Holnam - color Limestone or approved equal. See Section K of this Manual.

For areas where the total surface is finished with flagstone, the individual sections shall be of random length and width. See Sheets I-6 & 7 for typical details.

Placing and Grouting of Flagstone Pavers requires skill and experience in this type work. Poor workmanship will be cause for rejection. Craftsmen placing flagstone in the Downtown area must be able to demonstrate ability to place, finish and grout the material in an acceptable manner.

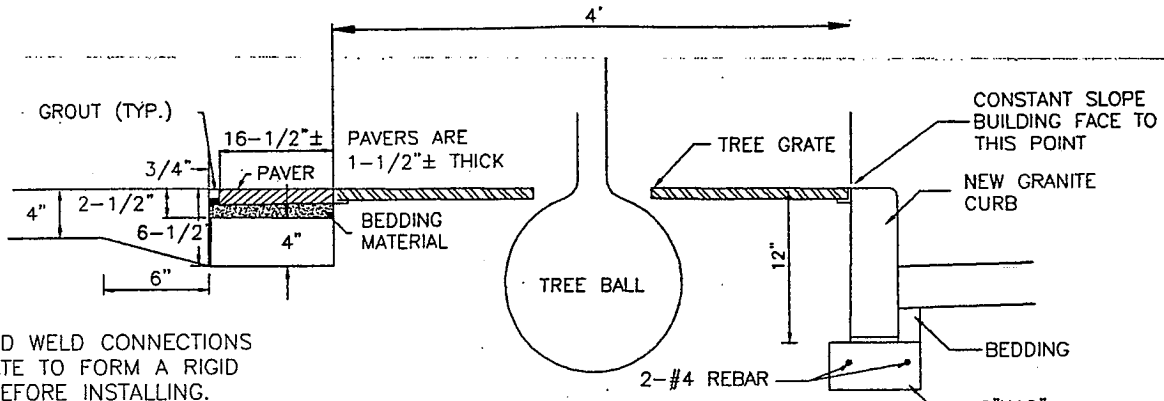


FLAGSTONE INLAID SIDEWALK
 WHERE FLAGSTONE PAVERS PLACED
 NEXT TO CURB
 NOT TO SCALE



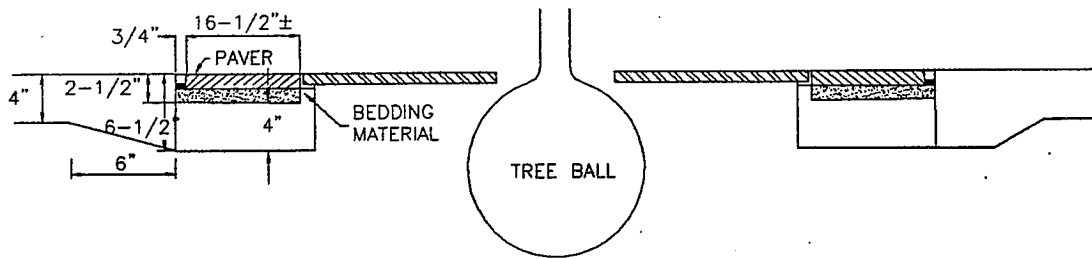
"B-B"
TYPICAL DETAIL FLAGSTONE PAVERS
 FLAGSTONE INLAID NEXT TO CURB
 NOT TO SCALE

GROUT (TYP.)

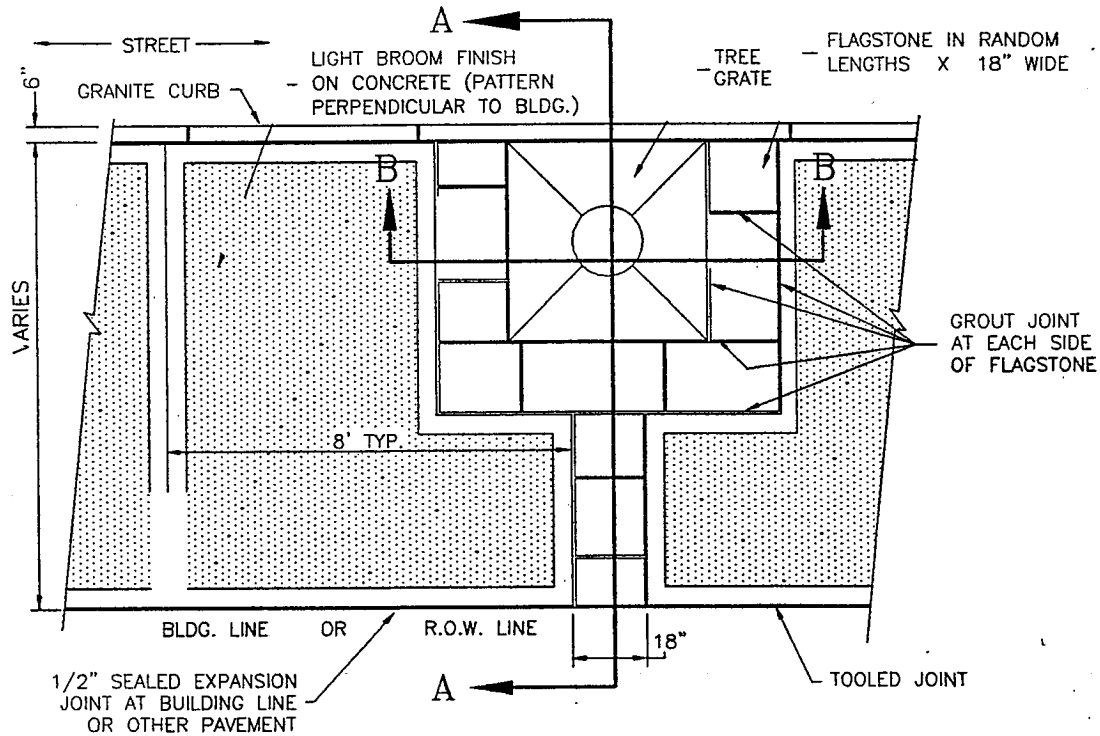


SECTION "A-A"
NOT TO SCALE

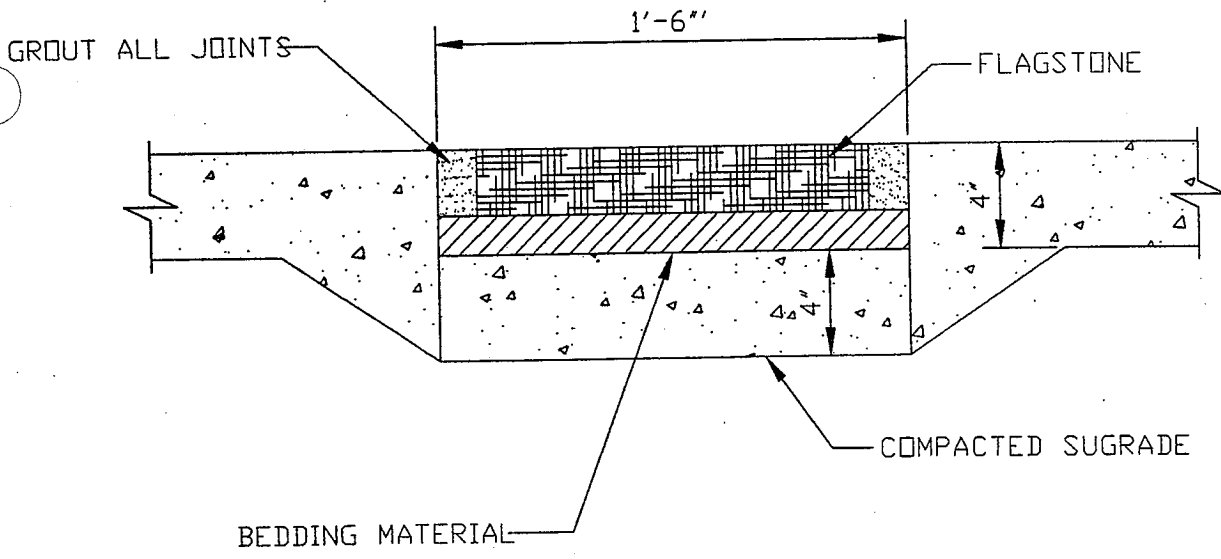
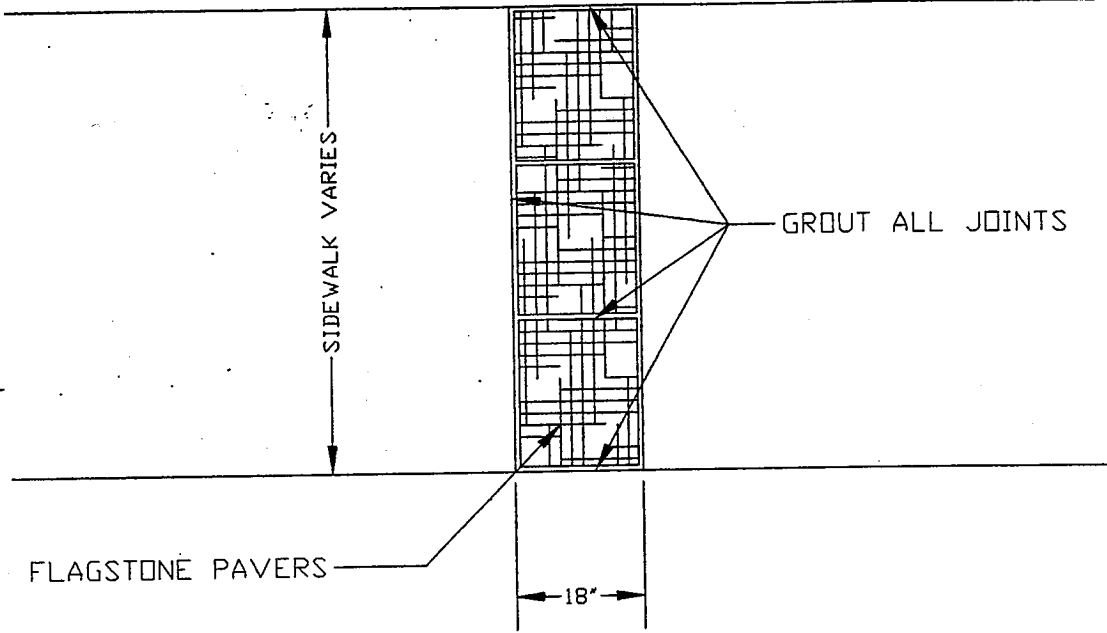
ASSEMBLE AND WELD CONNECTIONS ON TREE GRATE TO FORM A RIGID STRUCTURE BEFORE INSTALLING.

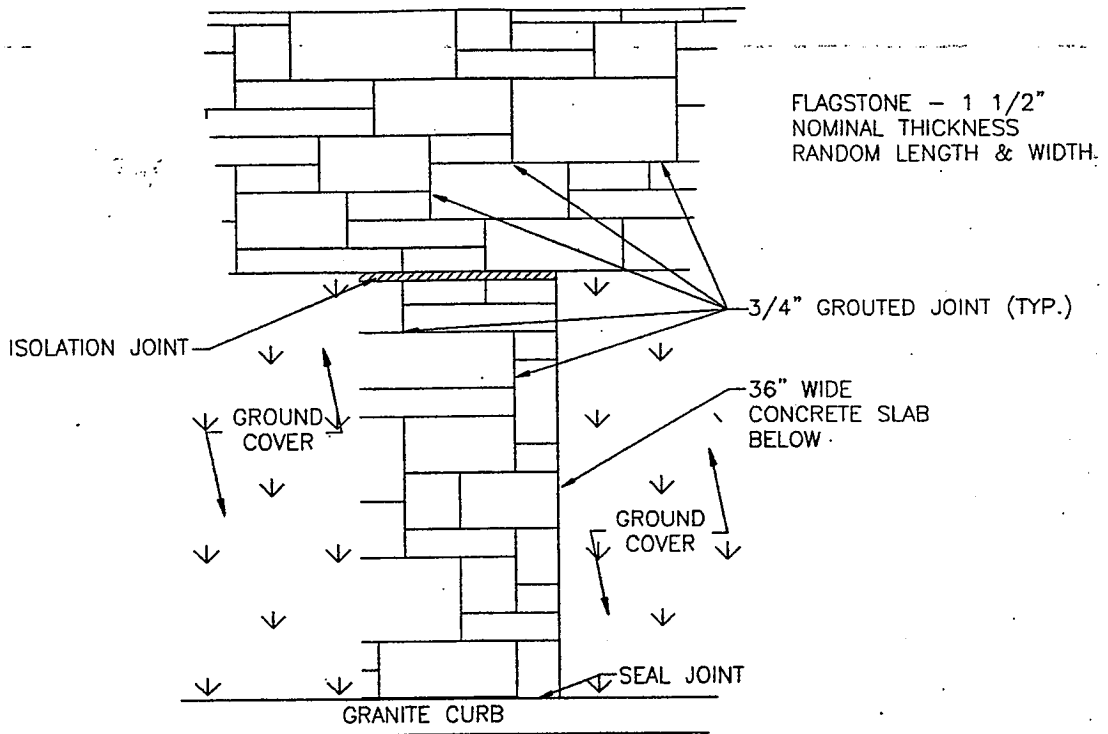


SECTION "B-B"
NOT TO SCALE

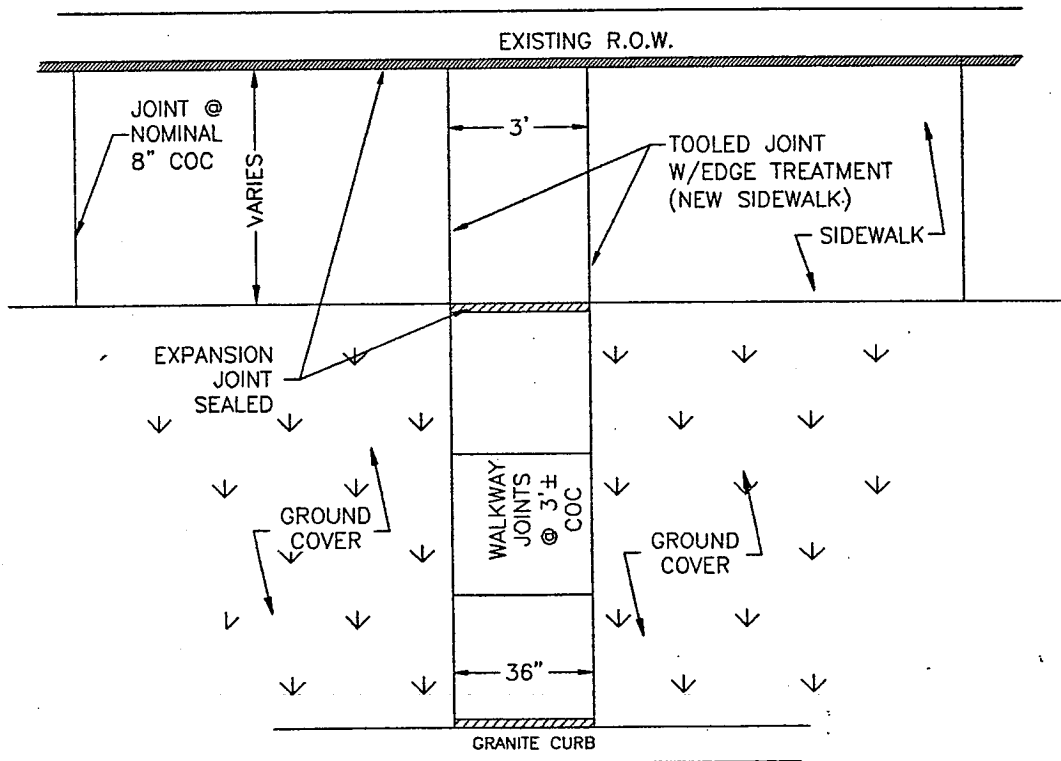


SIDEWALK FINISH AROUND TREE GRATES
AREAS WITH FLAGSTONE PAVERS
NOT TO SCALE

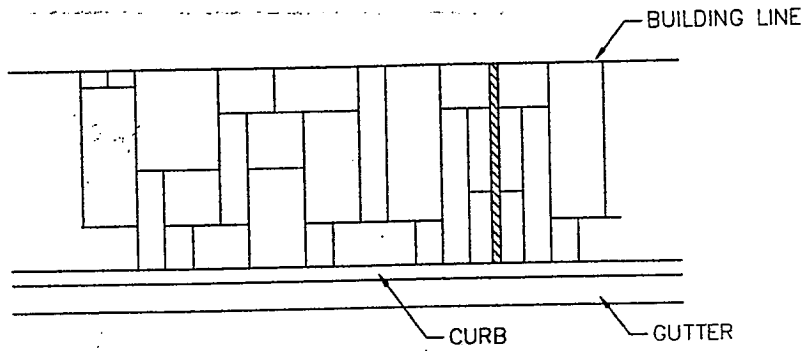




PLAN DETAIL OF FLAGSTONE PAVED WALKWAYS WITH GRASS MEDIAN
 NOT TO SCALE



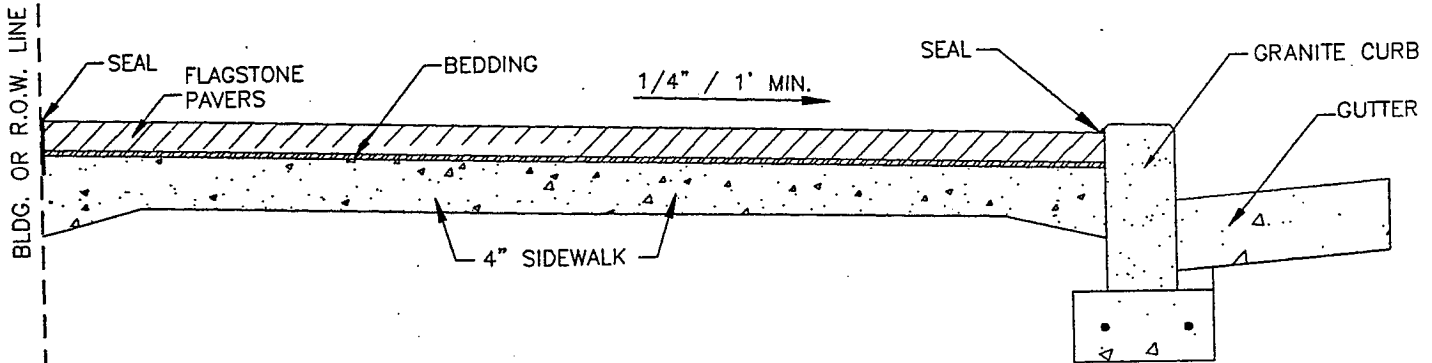
PLAN DETAIL OF CONCRETE WALKWAYS WITH GRASS MEDIAN
 NOT TO SCALE



SIDEWALK PLAN VIEW
FULL FLAGSTONE PAVED AREAS
 NOT TO SCALE

SET BACK LOCATION
 OF LIGHTS SAME AS
 OTHER STREETS

CONCRETE SHALL CURE
 MINIMUM 28 DAYS BEFORE
 PLACING FLAGSTONE



SIDEWALK CROSS SECTION
FULL FLAGSTONE PAVED AREAS
 NOT TO SCALE